

Exploring Disciplinarity

Modeling and Mapping Science Workshop Panel

Cassidy Sugimoto
Scott Weingart & Chaoqun Ni

Bloomington, Indiana March 21, 2011

Conceptualizations

Social	"a recognized community of researchers"
Communicative	"established manner for communication their findings"
Cognitive	"coherence of content"
Methodological	"finite set of methods of inquiry"
Institutional	"group of institution that persist and remain stable over time"
Educational	"a system for perpetuating the discipline by training new practitioners"

Operationalizations

- Units

- Person
- Paper
- Journal
- Department
- Degree
- Institution

- Methods

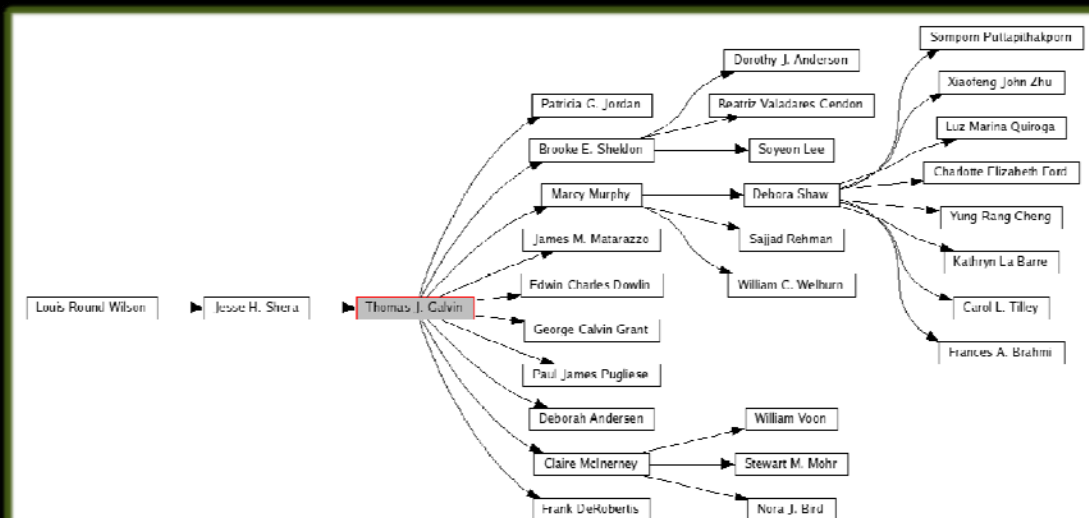
- Word co-occurrence
- Topic modeling
- Citation/co-citation/bibliographic coupling
- Collaboration/co-authorship/co-worker networks
- Hybrid

- Approaches

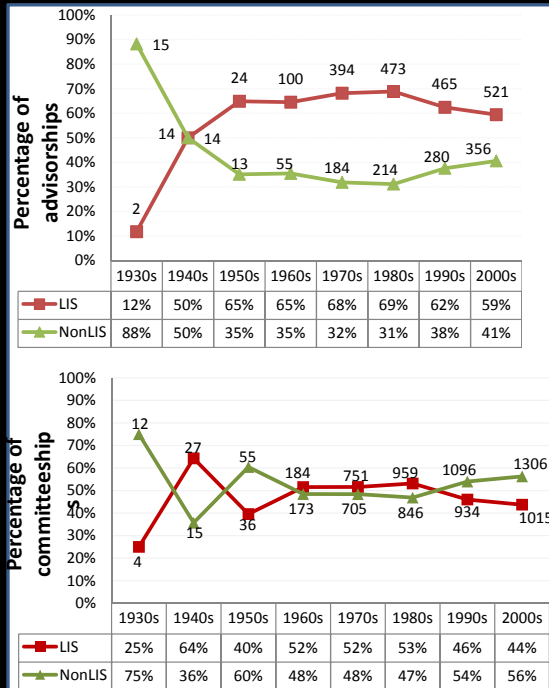
- Top-down
- Bottom-up

"The dissimilarity of text topics and the different content of the core articles is an indicator of the specificity and therefore references of a text block of order articles." (Bartelds and Meert, 2010)

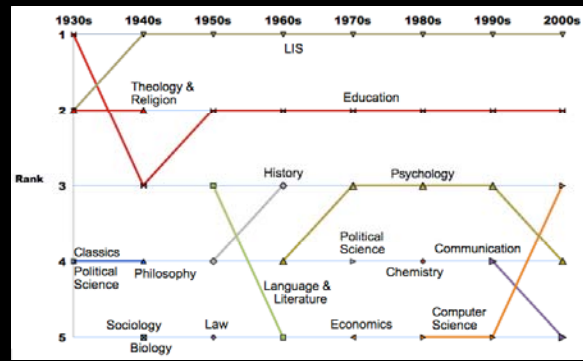
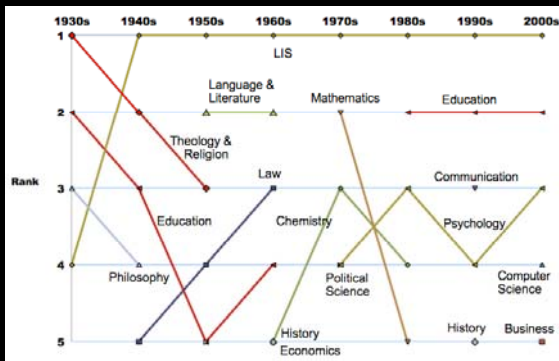
Academic Genealogy



Interdisciplinarity in LIS



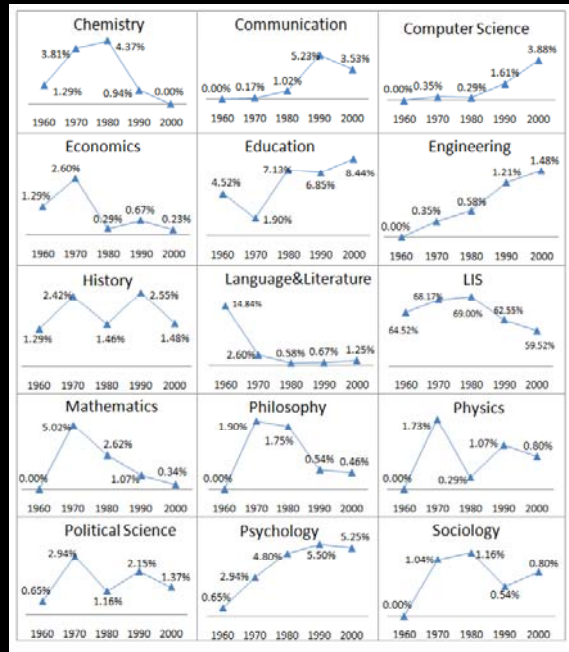
Top imported disciplines



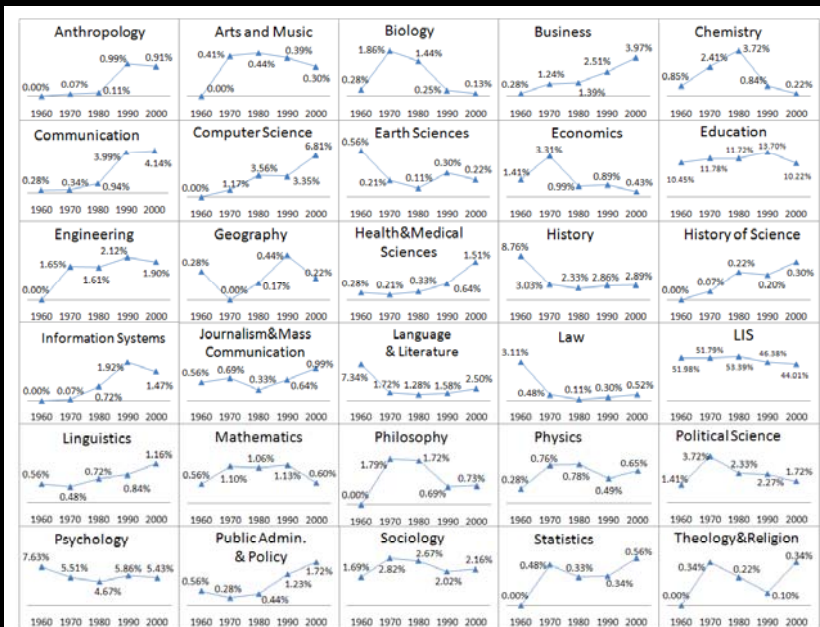
Advisors

Committee members

Advisor trends



Committee member trends



The vision

- 1** Improved connections between conceptualizations and operationalizations in science of science
- 2** Large-scale utilization of academic genealogy as an indicator for the birth, maturation, and interaction of disciplines
- 3** Mapping of doctorates and transfer of people between institutions and countries by time and discipline