

Visual Analytics

Katy Börner @katycns

Victor H. Yngve Distinguished Professor of
Intelligent Systems Engineering & Information Science
Director, Cyberinfrastructure for Network Science Center
School of Informatics, Computing, and Engineering
Indiana University Network Science Institute (IUNI)
Indiana University, Bloomington, IN, USA



*NSWC Crane, Corporate Operations Department (HR, Facilities, Information Tech, Safety,
Business Ops, Financial, Strategy)*

Luddy Hall, Bloomington, IN

September 12, 2018

Evolution of the Crane Innovation Ecosystem

FUNDAMENTALS



CAPACITY



ACCESS



\$52M



Over \$250M invested

CAPABILITIES



\$41M
176k solar panels
17megawatts

PURDUE
RESEARCH FOUNDATION
@WestGate



LEADERSHIP



WestGate Tech Park – 15 bldgs., 35 tenants & ~450 employees.
EastGate Tech Park – 2 bldgs., 9 tenants & ~250 employees.

Distinguished Lecture

25 SEP | 1400-1500 | Main Conference Room of the Lakeview Club Conference Center

Katy Börner

Victor H. Yngve Distinguished Professor of Engineering and Information Science
Director, Cyberinfrastructure for Network Science Center, Indiana University, Bloomington

Title: Information Visualization of NSWC Crane Innovation Ecosystem as part of Naval Science and Technology

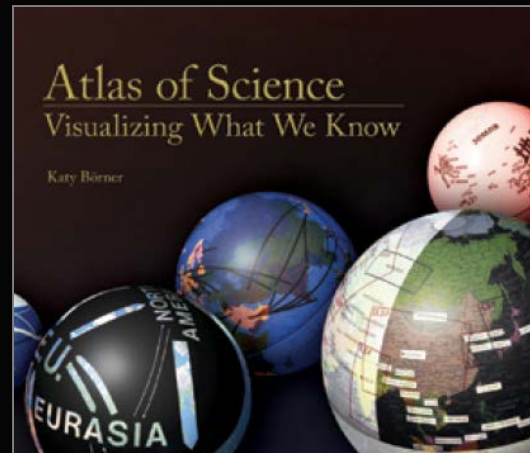
Abstract:

CRANE has a demonstrated need to allocate resources, both monetary and human, to foster innovations in science and technology. In recent decades, science policy makers and other decision makers have embraced data mining and visualization to gain insights into the structure and evolution of science. Advances in computational power combined with the unprecedented volume and variety of data on science and technology developments (e.g., publications, patents, funding data) create ideal conditions for the advancement of data analysis and visualization approaches that can be empirically validated and used to simulate and understand the structure and dynamics of STI and to augment human decision making.

This talk presents results from a recent study that (1) conducted a user needs analysis to identify areas of strategic interest to CRANE as well as analyses and visualizations that best support strategic decision making and (2) developed methods for the identification of leading experts and potential collaborators in relevant research areas, analyzing investments by other funding organizations, and tracing the development of emerging research areas.

Maps of Science, Technology & Innovation

Using advanced data mining and visualization techniques to render large-scale datasets into actionable knowledge.



Maps of Science & Technology

<http://scimaps.org>



101st Annual Meeting of the Association of American Geographers, Denver, CO.
April 5th - 9th, 2005 (First showing of Places & Spaces)



University of Miami, Miami, FL.
September 4 - December 11, 2014.



Duke University, Durham, NC.
January 12 - April 10, 2015



The David J. Sencer CDC Museum, Atlanta, GA.
January 25 - June 17, 2016.

100 maps and 12 macrosopes by 215 experts on display at 354 venues in 28 countries.



SB-1011 ©2006 Institute for the Future. All rights reserved. Reproduction is prohibited without written permission.

A map is a tool for navigating an unknown terrain. In the case of this map, **Science & Technology Outlook: 2005–2055**, the terrain we're navigating is the uncharted territory of science and technology [S&T] in the next 50 years. However, the map of the future is not a tool for prediction or, for that matter, the product of predictions. Nor is it comparable to modern navigation techniques in which we rely on a shrinking number of strong signals, like GPS coordinates, to show the right path. Rather, it's more akin to classical low-tech navigational techniques with their reliance on an array of weak signals such as wind direction, the look and feel of the water, and the shape of cloud formations. Taken together, these signals often prove more useful for navigation than high-tech methods because, in addition to aiding travelers in selecting the "right" path, the signals contextualize information and reveal interdependencies and connections between seemingly unrelated events, thus enriching our understanding of the landscape. That's precisely the intention of this map of the future of S&T—to give the reader a deeper contextual understanding of the landscape and to point to the intricacies and interdependencies between trends.

While developing the map, the **Institute for the Future (ITFF)** team listened for and connected a variety of weak signals, including those generated during interviews and workshop conversations involving more than 100 eminent U.K. and U.S. experts in S&T—academicians, policymakers, journalists, and corporate researchers. The ITFF team also compiled a database of outlooks on developments that are likely to impact the full range of S&T disciplines and practice areas over the next 50 years. We also relied on ITFF's 40 years of experience in forecasting S&T developments to create the map and an accompanying set of **S&T Perspectives** that discuss issues emerging on the S&T horizon and are important for organizations, policymakers, and society-at-large to understand.

On this map, six themes are woven together across the 50-year horizon, often resulting in important breakthroughs. These are supported by key technologies, innovations, and discoveries. In addition to the six themes, three meta-themes—democratized innovation, transdisciplinarity, and emergence—will overlay the future S&T landscape influencing how we think about, learn about, and practice science. Finally, S&T trends won't operate in a vacuum. Wider social, demographic, political, economic, and environmental trends will both influence S&T trends and will be influenced by them. Some of these wider trends surround the map to remind us of the larger picture.

MAP THEMES

- Small World**

After 20 years of basic research and development at the 100-nanometer scale, the importance of nanotechnology as a source of innovations and new capabilities in everything from materials science to medicine is already well-understood. Three trends, however, will define how nanotechnology will unfold, and what impacts it will have. First, nanotechnology is not a single field with a coherent intellectual program; it's an opportunistic hybrid, shaped by a combination of fundamental research questions, promising technical applications, and venture and state capital. Second, nanotechnology is moving away from the original vision of small-scale mechanical engineering—in which assemblers build mechanical systems from individual atoms—toward one in which molecular biology and biochemistry contribute essential tools (such as proteins that build nanowires). Finally, nanotechnology will also serve as a model for transdisciplinary science. It will support both fundamental research and commercially oriented innovation; and it will be conducted not within the boundaries of conventional academic or corporate research departments, but in institutional and social milieus that emphasize heterogeneity.
- Intentional Biology**

For 3.6 billion years, evolution has governed biology on this planet. But today, Mother Nature has a collaborator: Inexpensive tools to read and rewrite the genetic code of life will bootstrap our ability to manipulate biology from the bottom up. We'll not only genetically re-engineer existing life but actually create new life forms with purpose. Still, we will not be blind to what nature has to teach us. Evolution's elegant engineering at the smallest scales will be a rich source of inspiration as we build the bio-nanotechnology of the next 50 years.
- Extended Self**

In the next 50 years, we will be faced with broad opportunities to remake our minds and bodies in profoundly different ways. Advances in biotechnology, brain science, information technology, and robotics

- will result in an array of methods to dramatically alter, enhance, and extend the mental and physical hand that nature has dealt us. Wielding these tools on ourselves, humans will begin to define a variety of different "transhumanist" paths—that is, ways of being and living that extend beyond what we today consider natural for our species. In the very long term, following these paths could someday lead to an evolutionary leap for humanity.
- Mathematical World**

The ability to process, manipulate, and ultimately understand patterns in enormous amounts of data will allow decoding of previously mysterious processes in everything from biological to social systems. Scientists are learning that at the core of many biological phenomena—reproduction, growth, repair, and others—are computational processes that can be decoded and simulated. Using techniques of combinatorial science to uncover such patterns—whether these are physical, biological, or social—will likely occupy an increasing share of computing cycles in the next 50 years. Such massive computation will also make simulation widespread. Computer simulation will be used not only to help make decisions about large complex scientific and social problems but also to help individuals make better choices in their daily lives.
- Sensory Transformation**

In the next ten years, physical objects, places, and even human beings themselves will increasingly become embedded with computational devices that can sense, understand, and act upon their environment. They will be able to react to contextual clues about the physical, social, and even emotional state of people and things in their surroundings. As a result, increasing demands will be placed on our visual, auditory, and other sensory abilities. Information previously encoded as text and numbers will be displayed in richer sensory formats—as graphics, pictures, patterns, sounds, smells, and tactile experiences. This enriched sensory environment will coincide with major breakthroughs in our understanding of the brain—in how we process sensory information and connect various sensory functions.

- Humans will become much more sophisticated in their ability to understand, create, and manage sensory information and ability to perform such tasks will become keys to success.
- Lightweight Infrastructure**

A confluence of new materials and distributed intelligence is pointing the way toward a new kind of infrastructure that will dramatically reshape the economics of moving people, goods, energy, and information. From the molecular level to the macro-economic level, these new infrastructure designs will emphasize smaller, smarter, more independent components. These components will be organized into more efficient, more flexible, and more secure ways than the capital-intensive networks of the 20th century. These lightweight infrastructures have the potential to boost emerging economies, improve social connectivity, mitigate the environmental impacts of rapid global urbanization, and offer new future paths in energy.

META-THEMES

- Democratized Innovation**

Before the 20th century, many of the greatest scientific discoveries and technical inventions were made by amateur scientists and independent inventors. In the last 100 years, a professional class of scientists and engineers, supported by universities, industry, and the state, pushed amateurs aside as a creative force. At the national scale, the capital-intensive character of scientific research made world-class research the property of prosperous advanced nations. In the new century, a number of trends and technologies will lower the barriers to participation in science and technology again, both for individuals and for emerging countries. The result will be a renaissance of the serious amateurs, the growth of new scientific and technical centres of excellence in developing countries, and a more global distribution of world-class scientists and technologists.

- Transdisciplinarity**

In the last two centuries, natural philosophy and natural history fractured into the now-familiar disciplines of physics, chemistry, biology, and so on. The sciences evolved into their current form in response to intellectual and professional opportunities, philanthropic priorities, and economic and state needs. Through most of the 20th century, the growth of the sciences, and academic and career pressures, encouraged ever-greater specialization. In the coming decades, transdisciplinary research will become an imperative. According to Howard Rheingold, a prominent forecaster and author, "transdisciplinarity goes beyond bringing together researchers from different disciplines to work in multidisciplinary teams. It means educating researchers who can speak languages of multiple disciplines—biologists who have understanding of mathematics, mathematicians who understand biology."
- Emergence**

The phenomenon of self-organizing swarms that generate complex behavior by following simple rules—will likely become an important research area, and an important model for understanding how the natural world works and how artificial worlds can be designed. Emergent phenomena have been observed across a variety of natural phenomena, from physics to biology to sociology. The concept has broad appeal due to the diversity of fields and problems to which it can be applied. It is proving useful for making sense of a very wide range of phenomena. Meanwhile, emergence can be modeled using relatively simple computational tools, although those models often require substantial processing power. More generally, it is a richly suggestive way of thinking about designing complex, robust technological systems. Finally, emergence is an accessible and vivid metaphor for understanding nature. Just as classical physics profited from popular treatments of Newtonian mechanics, so too will scientific study and technical reproductions of emergent phenomena likely draw benefits from the popularization of its underlying concepts.

- Democratized Innovation**

From innovation hotspots to innovation flatlands
- Trans-disciplinarity**

From working in teams to sharing language
- Emergence**

From top-down to bottom-up principles

- Small World
- Intentional Bio
- Extended Self
- Mathematical World
- Sensory Transformation
- Lightweight Infrastructure



Map of Scientific Collaborations from 2005-2009



Computed Using Data from Elsevier's Scopus

Stream of Scientific Collaborations Between World Cities - Olivier H. Beauchesne - 2012

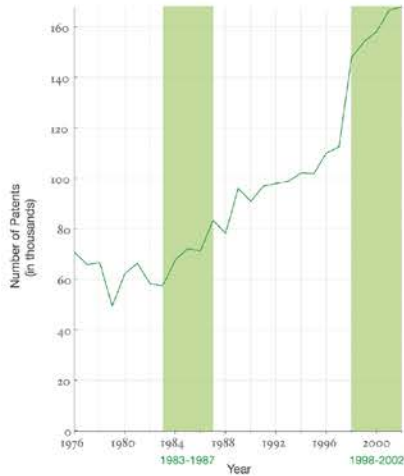
Examining the Evolution & Distribution of Patent Classifications

Managing Growing Patent Portfolios

Organizations, businesses, and individuals rely on patents to protect their intellectual property and business models. As market competition increases, patenting innovation and intellectual property rights becomes ever more important.

Managing the staggering number of patents demands new tools and methodologies. Grouping patents by their classifications offers an ideal resolution for better understanding how intellectual borders are established and change over time.

The charts below show the annual number of patents granted from January 1, 1976 to December 31, 2002 in the United States Patent and Trademark Office (USPTO) patent archive; slow and fast growing patent classes; the top 10 fast growing patent subclasses; and two evolving patent portfolios.



The Structure and Evolution of the Patent Space

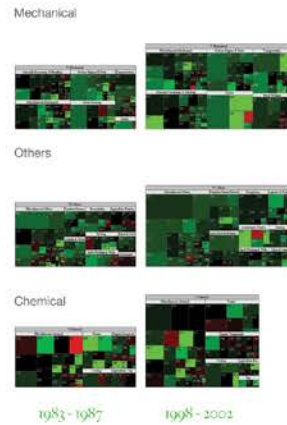
The United States Patent and Trademark Office assigns each patent to one of more than 450 classes covering broad application domains. For example, class 514 encompasses all patents dealing with 'Drug, Bio-Affecting and Body Treating Compositions.' Classes are further broken down by subclasses that have hierarchical associations. As one example, class 455 features subclass 99 entitled "with vehicle."

The top 10 fast growing patent classes for 1998–2002 are listed together with the number of patents granted. Most come from the 'Computer and Communications' and the 'Drugs and Medical' area.

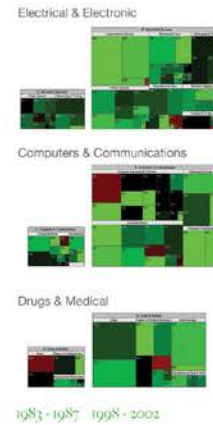
The evolving hierarchical structure of patent classes and their sizes is represented using treemaps, a space-filling visualization technique developed by Ben Shneiderman at the University of Maryland. A treemap presents a hierarchy as a collection of nested rectangles—demarkating a parent-child relationship between nodes by nesting the child within the parent rectangle. The size and color of each rectangle represent certain attributes of the nodes.

Here, each rectangle represents a class and the area size denotes the total number of patents in that class. The rectangle's color corresponds to percentage increase (green) or decrease (red) in the number of patents granted in that class from the previous interval.

Slow Growing Classes



Fast Growing Classes



Top-10 Subclasses

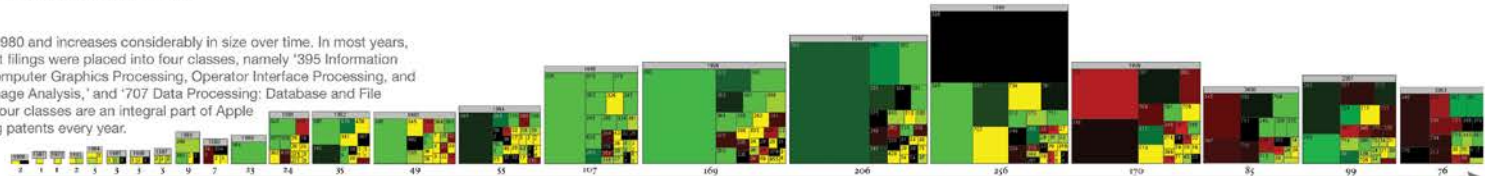
Class	Title	# of Patents
514	Drug, Bio-Affecting and Body Treating Compositions	18,778
438	Semiconductor Device Manufacturing:Process	17,775
435	Chemistry: Molecular Biology and Microbiology	17,474
424	Drug, Bio-Affecting and Body Treating Compositions	13,637
428	Stock Material or Miscellaneous Articles	13,314
257	Active Solid-State Devices (e.g., Transistors, Solid-State Diodes)	12,924
395	Information Processing System Organization	9,955
345	Computer Graphics Processing, Operator Interface Processing, and Selective Visual Display Systems	9,510
359	Optical: Systems and Elements	9,151
365	Static Information Storage and Retrieval	8,392
	Total	130,910

Patent Portfolio Analysis

A longitudinal analysis of portfolios reveals different patenting strategies. For each year (given in gray above each treemap), a treemap of all new patents granted to the assignee is shown. The number of patents is given below each treemap. The same size and color coding as above was used. In addition, yellow indicates that no patent has been granted in that class in the last 5 years.

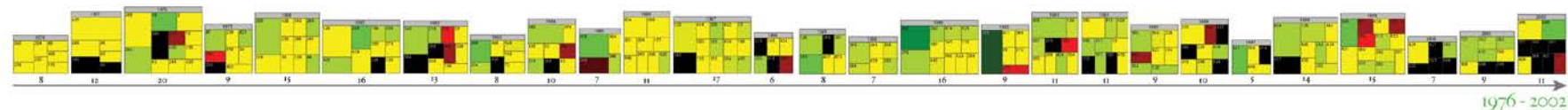
Apple Computer, Inc.

Apple Computer, Inc.'s portfolio starts in 1980 and increases considerably in size over time. In most years, more than half of Apple Computer's patent filings were placed into four classes, namely '395 Information Processing System Organization,' '345 Computer Graphics Processing, Operator Interface Processing, and Selective Visual Display Systems,' '382 Image Analysis,' and '707 Data Processing: Database and File Management or Data Structures.' These four classes are an integral part of Apple Computer, Inc.'s patent portfolio, receiving patents every year.

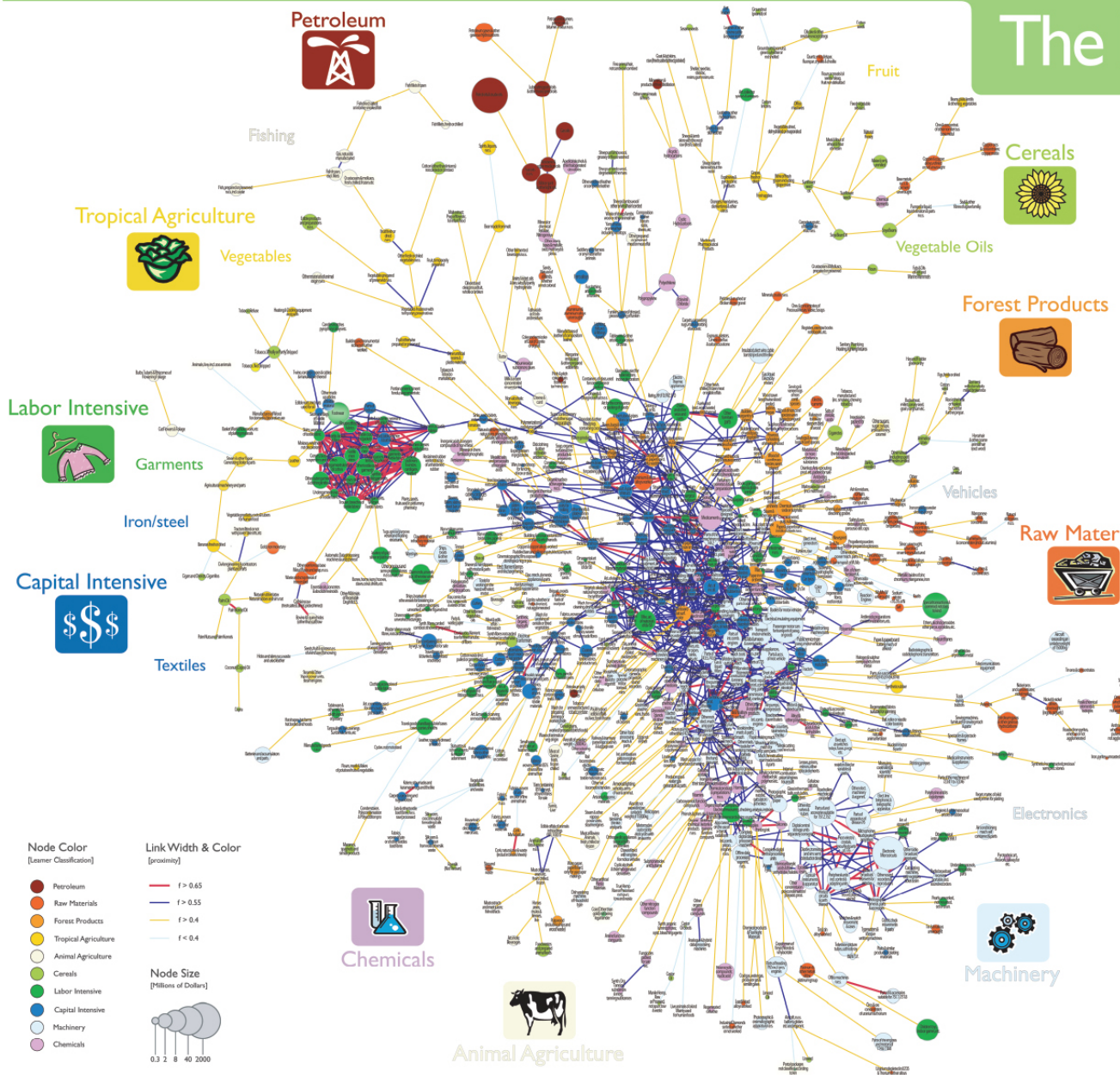


Jerome Lemelson

The patent portfolio of Jerome Lemelson shows a very different activity pattern. Starting in 1976, he publishes between 6–20 patents each year. However, the predominance of yellow shows that there is little continuity from previous years in regards to the classes into which patents are filed. No class dominates. Instead, more and more new intellectual space is claimed.



The Product Space



World trade flow data compiled by Feenstra et al. and available at the National Bureau of Economic Research were used to identify the complete co-export matrix of 775 industrial products for 1998-2000. A Maximum Spanning Tree (MST) algorithm was used to reduce the complete co-export matrix to less than 1% of the links. The resulting network, which combines the MST plus all links with a co-export frequency of at least 0.55, was laid out using a force-directed layout algorithm. Node sizes represent the value of traded products in millions of U.S. dollars. Their color corresponds to ten product groups identified using the Leamer classification. Each product class is labeled by an icon. Link color and width indicate the frequency of joint exports.

Economic Footprint

■ Indicate Relevant Exports

Industrialized Countries



The network has a core-periphery structure with higher value product classes, e.g., machinery and chemicals, in the core and lower quality classes, e.g., fishing and garments, in the periphery. Products at the core of the network are highly interconnected while products in the periphery are sparsely interlinked.

East Asia Pacific



Each country has a certain product export footprint. Relevant exports by 'Industrialized Countries', 'East Asia Pacific' and 'Latin America & the Caribbean' are given on the right.

Latin America & the Caribbean



Traditional growth theory assumes that there is always a more sophisticated product within reach. However, given the core-periphery structure of the product space, the distances between products differ considerably.

Countries that operate at the core have capabilities to develop and manufacture a wide range of products. Yet, countries that mostly operate in the periphery of the product space have much fewer opportunities for diversification. A country's current footprint and the structure of the product space have a major impact on a country's future development.

Node Color
[Leamer Classification]

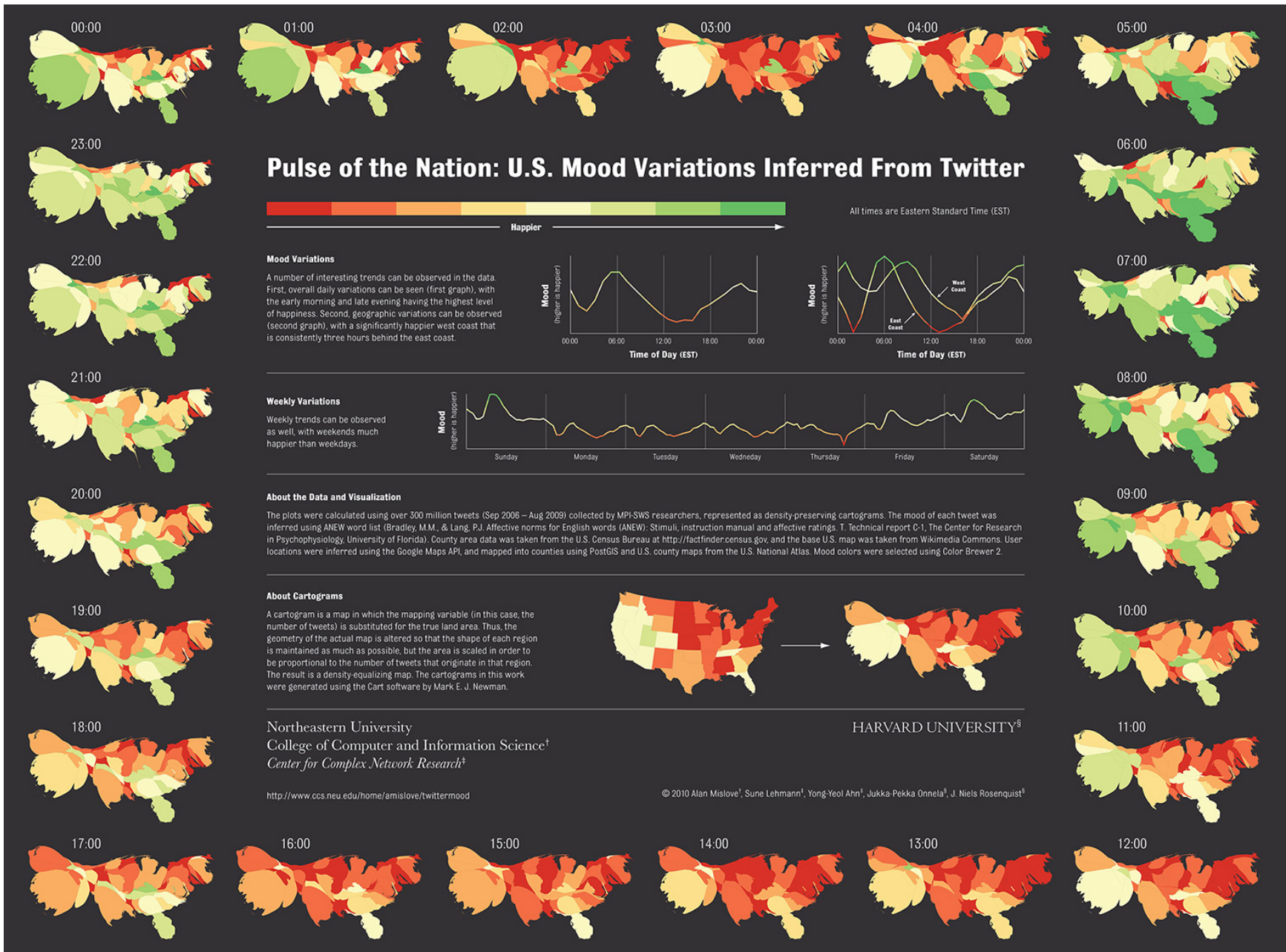
- Petroleum
- Raw Materials
- Forest Products
- Tropical Agriculture
- Animal Agriculture
- Cereals
- Labor Intensive
- Capital Intensive
- Machinery
- Chemicals

Link Width & Color
[proximity]

- $f > 0.65$
- $f > 0.55$
- $f > 0.4$
- $f < 0.4$

Node Size
[Millions of Dollars]





The EMERGENCE of NANOTECHNOLOGY

MAPPING THE NANO REVOLUTION

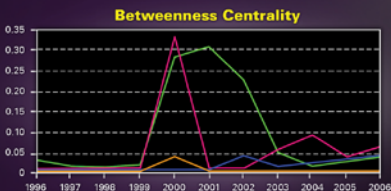
The emergence of nanotechnology has been one of the major scientific-technological revolutions in the last decade and it led to a structural reorganization of major fields of science. Price (1965) showed that fields of science and their development can be mapped using aggregated citations among the journals in the fields and their relevant environments.

The frames to the right show the evolving journal citation network for the years 1998-2003. Distances are proportional to cosine values between the citation patterns of the respective journals. Textual descriptions of key events during the development of *Nanotechnology* are given below each frame. Most notably, leading papers in *Science* and *Nature* catalyzed the breakthrough around 2000.

CHANGING ROLES OF DIFFERENT JOURNALS

The interdisciplinarity of a journal can be measured using betweenness centrality (BC)—journals that occur on many shortest paths between other journals in a network have higher BC value than those that do not. In the maps, sizes of nodes are proportional to the betweenness centrality of the respective journal in the citation network.

From being a specialist journal in applied physics, the journal *Nanotechnology* obtains a high BC value in the years of the transition, ca. 2001. This is preceded by the "intervention" of *Science*. After the transition, the new field of nanotechnology is established, new journals such as *Nano Letters* published by the influential American Chemical Society take the lead, and a new specialty structure with low BC value journals results.



An animated sequence of this evolution is at: <http://www.leydesdorff.net/journals/nanotech>.

References

Leydesdorff, L. and T. Schank. 2008. Dynamic Animations of Journal Maps: Indicators of Structural Change and Interdisciplinary Developments. *Journal of the American Society for Information Science and Technology*, 59(11), 1810-1818.

Price, Derek J. de Solla (1965). Networks of scientific papers. *Science*, 149, no. 3683, 510- 515.

1998

During the period 1996-2000, the journal *Nanotechnology* is part of a group of journals in applied physics.

1999

Increasingly, chemistry journals play a role in the citation impact environment of the journal *Nanotechnology*.

LEGEND

- Science
- Nature
- Nanotechnology
- Nano Letters

Values

- 0.8
- 0.22
- 0.33

2003

The journal *Science* is relevant in the citation impact environment, but now functions as one of the specialist journals in nanotechnology. *Nanoscience* further develops as an increasingly integrated network of journals.

2002

Other journals in nanoscience and technology begin to emerge, and the bridging role of the journal *Nanotechnology* gradually subsides. *Nano Letters* and the *Journal of Nanoscience and Nanotechnology* join the new field of nanotechnology.

2000

The journal *Science* interfaces with relevant journals in both sets: chemistry and applied physics. *Nanotechnology* emerges as core journal.

2001

The journal *Nanotechnology* now provides the interface between chemistry and physics. The "intervention" by *Science* is no longer needed.

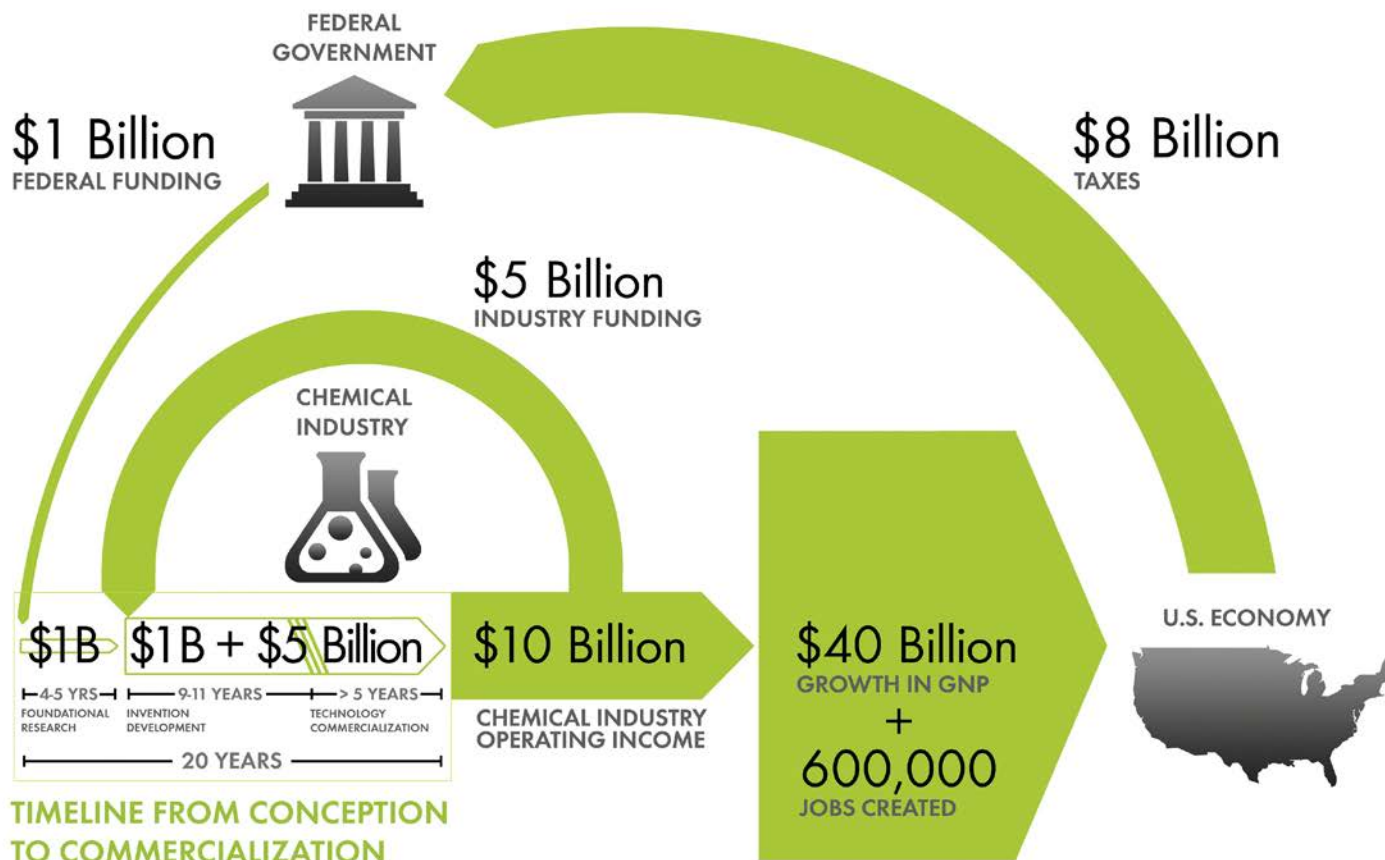
Chemical Research & Development Powers the U.S. Innovation Engine

Macroeconomic Implications of Public and Private R&D Investments in Chemical Sciences



has provided the U.S. Congress and government policy makers with important results regarding the impact of Federal Research & Development (R&D) investments on U.S. innovation and global competitiveness through its commissioned 5-year two phase study. To take full advantage of typically brief access to policy makers, CCR developed the graphic below as a communication tool that distills the complex data produced by these studies in direct, concise, and clear terms.

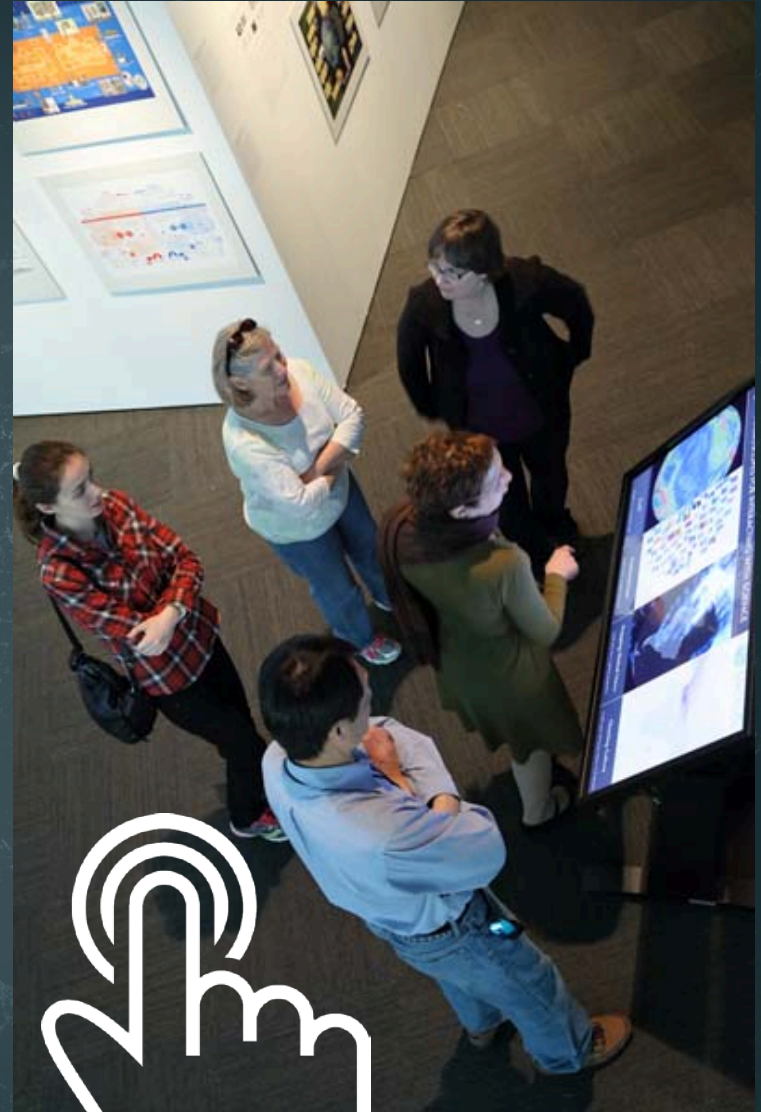
INVESTMENT IN CHEMICAL SCIENCE R&D



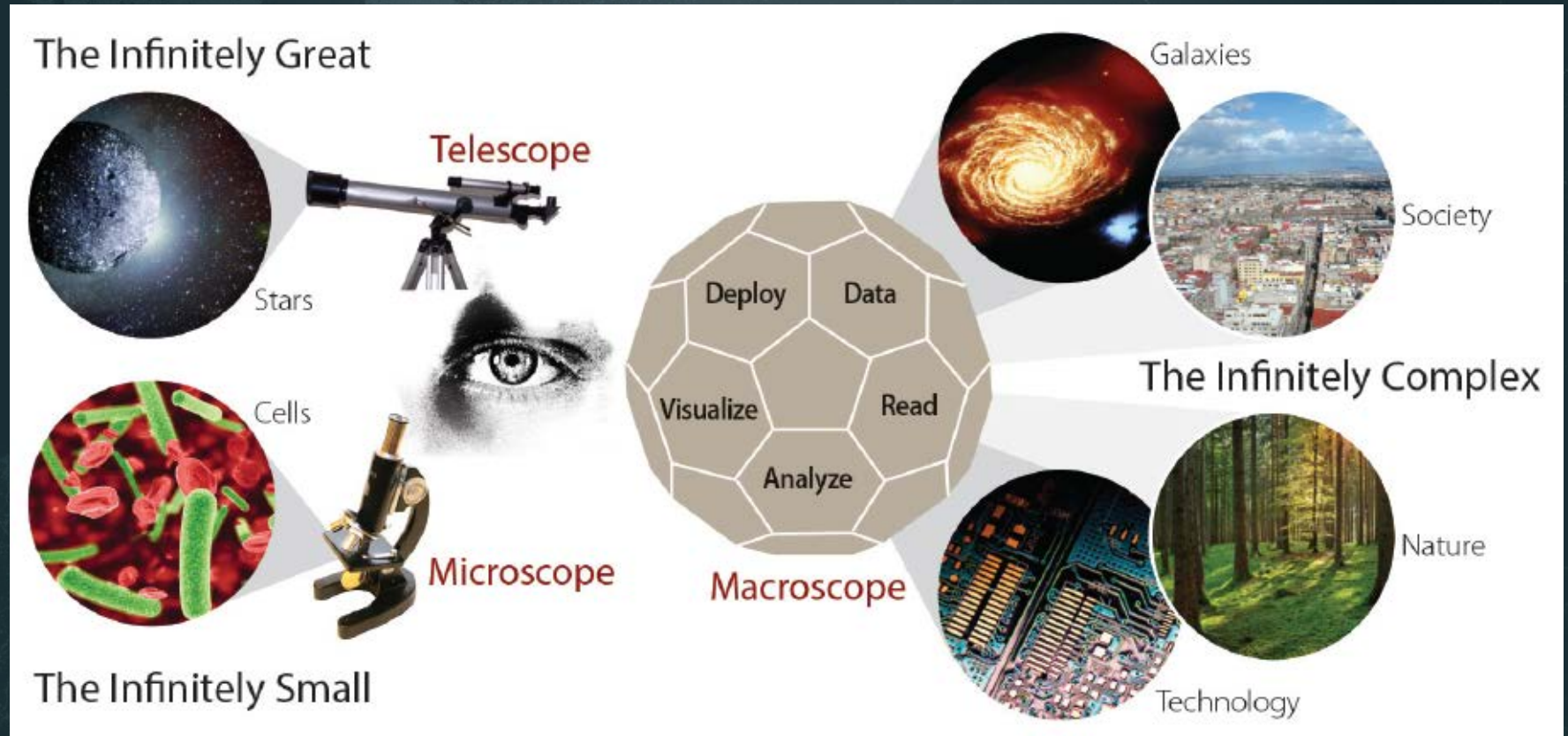
The design shows that an input of \$1B in federal investment, leveraged by \$5B in industry investment, brings new technologies to market and results in \$10B of operating income for the chemical industry, \$40B of growth in the Gross National Product (GNP) and further impacts the US economy by generating approximately 600,000 jobs, along with a return of \$8B in taxes. Additional details, also reported in the CCR studies, are depicted in the map to the left. This map clearly shows the two R&D investment cycles; the shorter industry investment at the innovation stage to commercialization cycle; and the longer federal investment cycle which begins in basic research and culminates in national economic and job growth along with the increase in tax base that in turn is available for investment in basic research.



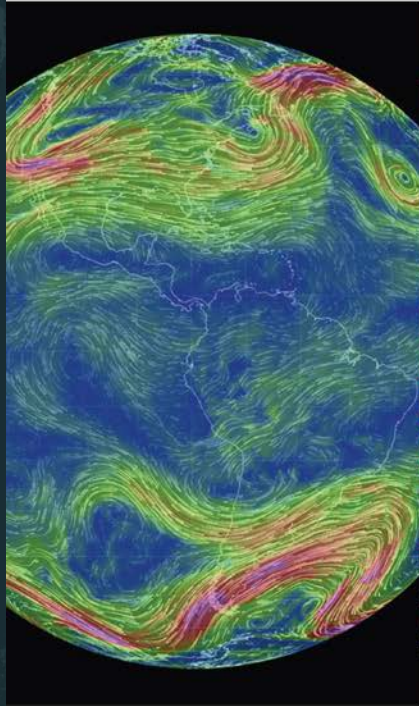
MAPS
vs.
MACROSCOPES



Microscopes & Telescopes vs. MACROSCOPES



i MACROSCOPES FOR INTERACTING WITH SCIENCE



Earth

Weather on a worldwide scale



AcademyScope

Exploring the scientific landscape



Mapping Global Society

Local news from a global perspective

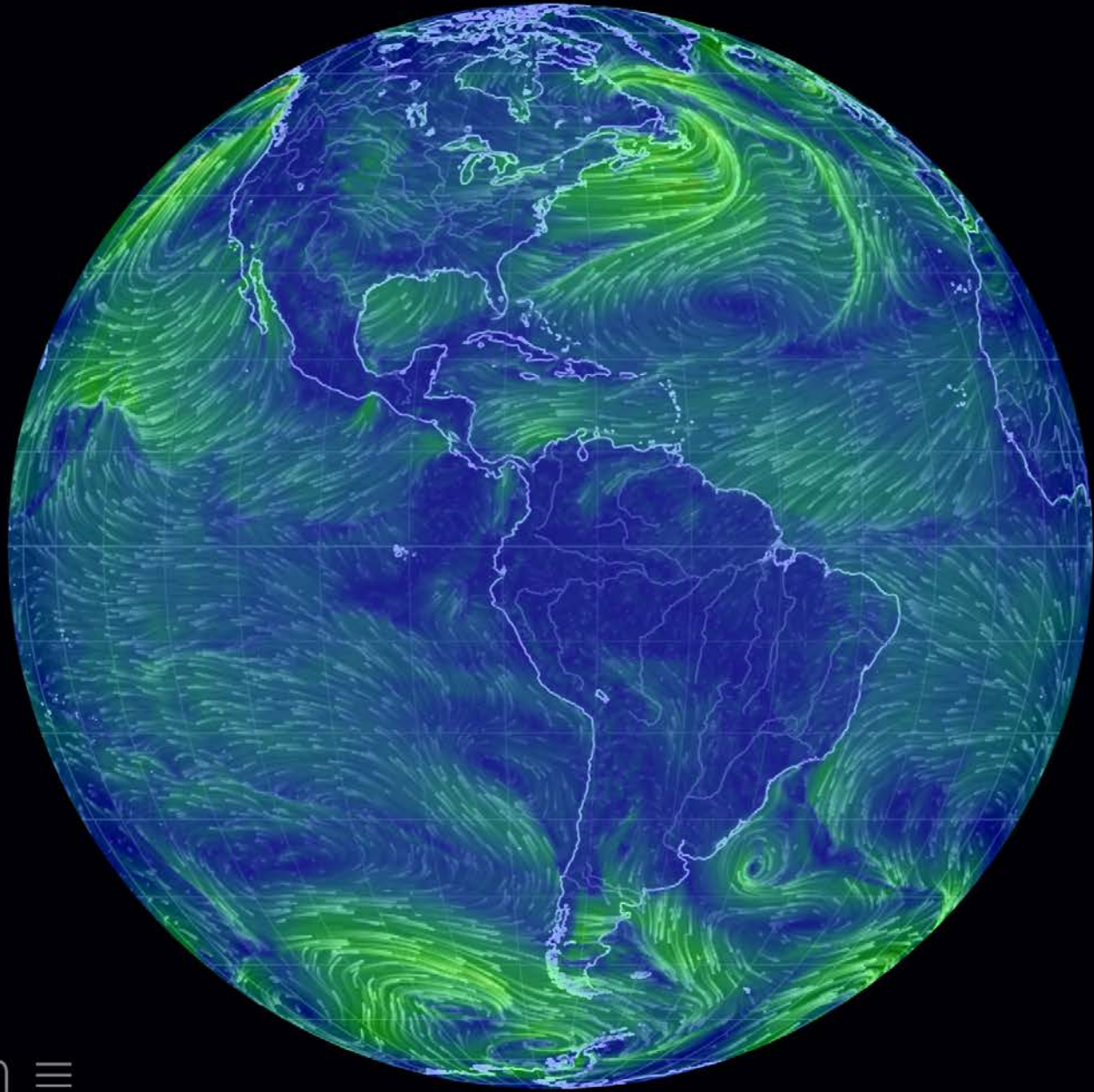


Charting Culture

2,600 years of human history in 5 minutes

Iteration XI (2015): Macroscopes for Interacting with Science

<http://scimaps.org/iteration/11>



earth ≡

Earth – Cameron Beccario

Top downloads



- +

- Agriculture
- Behavioral and Social Sciences
- Biography and Autobiography
- Biology and Life Sciences
- Computers and Information Technology
- Conflict and Security Issues
- Earth Sciences
- Education
- Energy and Energy Conservation
- Engineering and Technology
- Environment and Environmental Studies
- Explore Science
- Food and Nutrition
- Health and Medicine
- Industry and Labor
- Math, Chemistry and Physics
- Policy for Science and Technology
- Space and Aeronautics
- Transportation

opic=282

The News Co-occurrence Globe

An interactive visualization of how countries are mentioned together in the world's news media

+ - UNITED KINGDOM SEARCH ABOUT



2.92K
COOCCUR%

UNITED KINGDOM cooccurrences in: 2,922%
cooccurrences out: 80%

Timeline: Feb 22, Mar 1, Mar 8, Mar 15, Mar 22, Mar 29, Apr 5, Apr 12, Apr 19, Apr 26, May 3, May 10, May 17, May 24



COOCCUR

IN%

OUT%



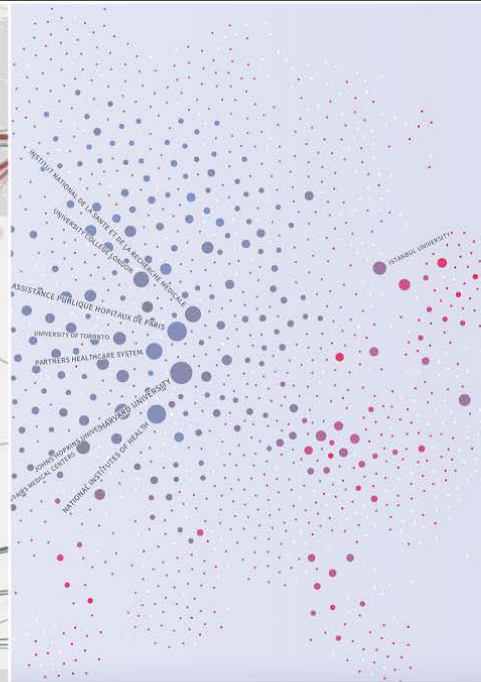
Smelly Maps

Charting urban smellscapes



HathiTrust

Storehouse of knowledge



Excellence Networks

Publish or perish together



FleetMon Explorer

Tracking the seven seas

Iteration XII (2016): Macrosopes for Making Sense of Science

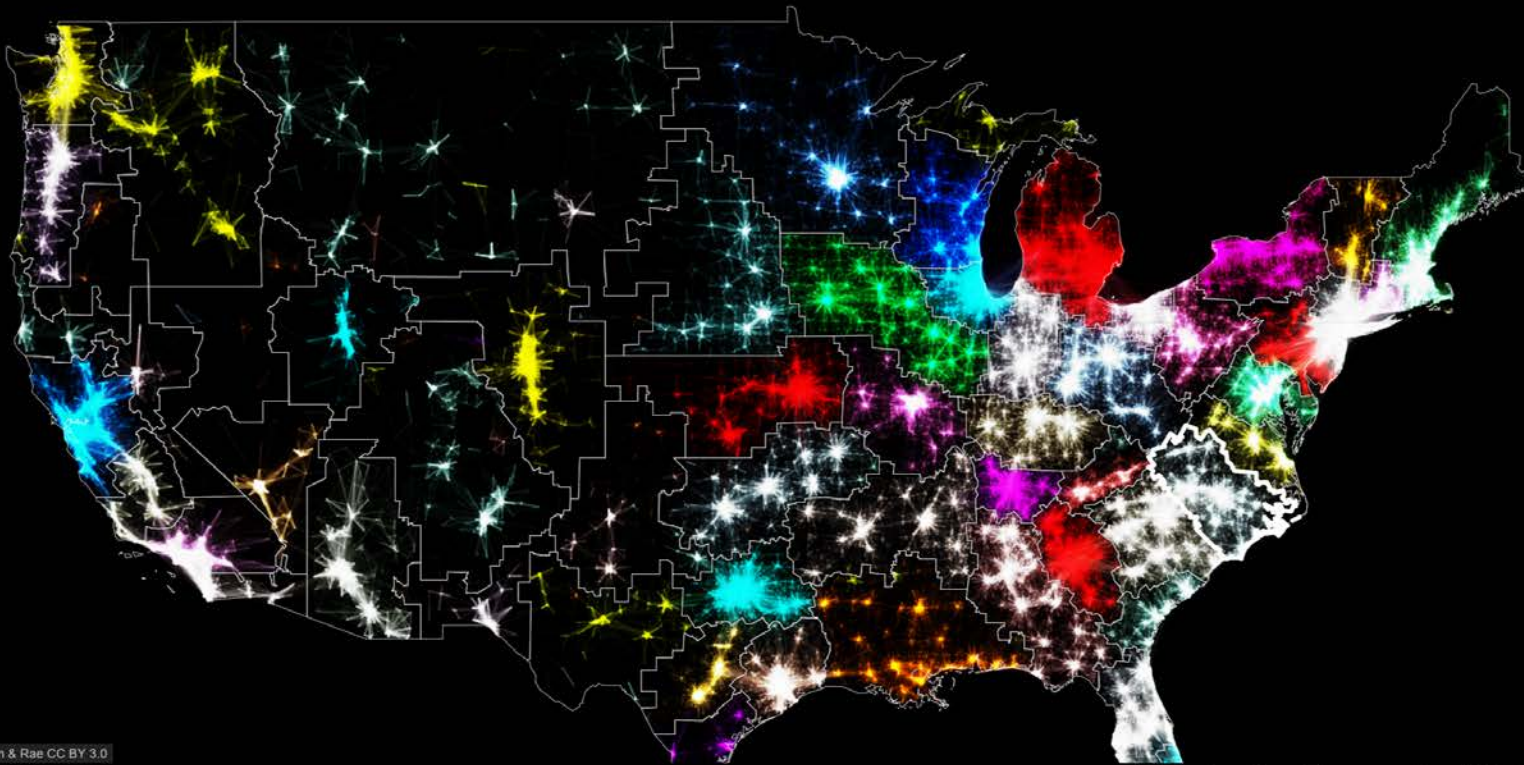
<http://scimaps.org/iteration/12>



Smelly Maps – Daniele Quercia, Rossano Schifanella, and Luca Maria Aiello – 2015

THE MEGAREGIONS OF THE US

Explore the new geography of commuter connections in the US.
Tap to identify regions. Tap and hold to see a single location's commuted.



Leaflet | Nelson & Rae CC BY 3.0

This is the Roanoke (Raleigh) megaregion.

Models of Science, Technology, and Innovation

Using large scale datasets, advanced data mining, modeling, and visualization techniques, and substantial computing resources.



Börner, Katy. 2016. "[Data-Driven Science Policy](#)". *Issues in Science and Technology* 33 (3): 26-28.



Modeling Science, Technology & Innovation Conference

WASHINGTON D.C. | MAY 17-18, 2016

[View Agenda](#)

Government, academic, and industry leaders discussed challenges and opportunities associated with using big data, visual analytics, and computational models in STI decision-making.

Conference slides, recordings, and report are available via <http://modsti.cns.iu.edu/report>



THOMSON REUTERS



INDIANA
UNIVERSITY
NETWORK
SCIENCE
INSTITUTE





PROGRAMS

Sackler Colloquia

- » About Sackler Colloquia
- » Upcoming Colloquia
- » Completed Colloquia
- » Sackler Lectures
- » Video Gallery
- » Connect with Sackler Colloquia
- » Give to Sackler Colloquia

Cultural Programs

Distinctive Voices

Kavli Frontiers of Science

Keck Futures Initiative

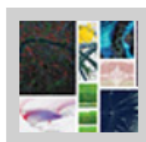
LabX

Sackler Forum

Science & Entertainment Exchange



Modeling and Visualizing Science and Technology Developments



December 4-5, 2017; Irvine, CA

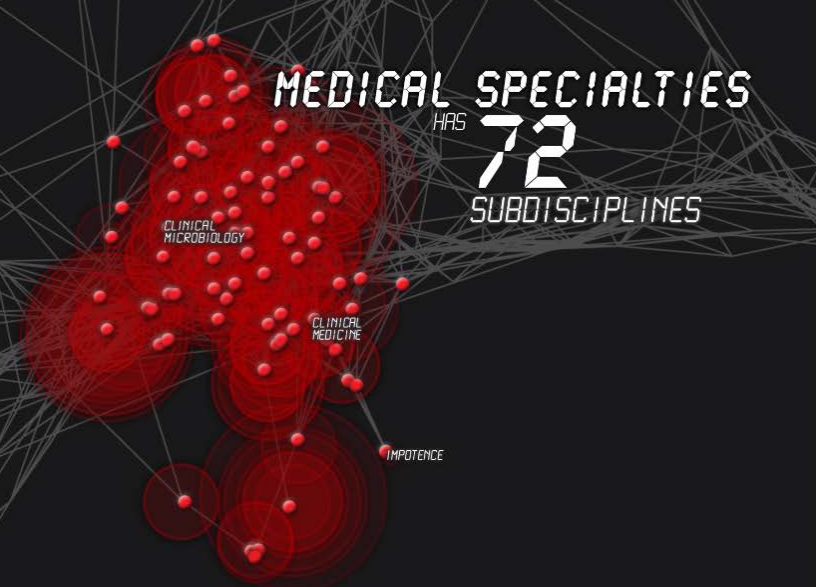
Organized by Katy Börner, H. Eugene Stanley, William Rouse and Paul Trunfio

Overview

This colloquium was held in Irvine, CA on December 4-5, 2017.

This colloquium brought together researchers and practitioners from multiple disciplines to present, discuss, and advance computational models and visualizations of science and technology (S&T). Existing computational models are being applied by academia, government, and industry to explore questions such as: What jobs will exist in ten years and what career paths lead to success? Which types of institutions will likely be most innovative in the future? How will the higher education cost bubble burst affect these institutions? What funding strategies have the highest return on investment? How will changing demographics, alternative economic growth trajectories, and relationships among nations impact answers to these and other questions? Large-scale datasets (e.g., publications, patents, funding, clinical trials, stock market, social media data) can now be utilized to simulate the structure and evolution of S&T. Advances in computational power have created the possibility of implementing scalable, empirically validated computational models. However, because the databases are massive and multidimensional, both the data and the models tend to exceed human comprehension. How can advances in data visualizations be effectively employed to communicate the data, the models, and the model results to diverse stakeholder groups? Who will be the users of next generation models and visualizations and what decisions will they be addressing.

Videos of the talks are available on the [Sackler YouTube Channel](#).



**MAP OF SCIENCE: FORECASTING
LARGE TRENDS IN SCIENCE**



**Science Forecast
S1:E1**



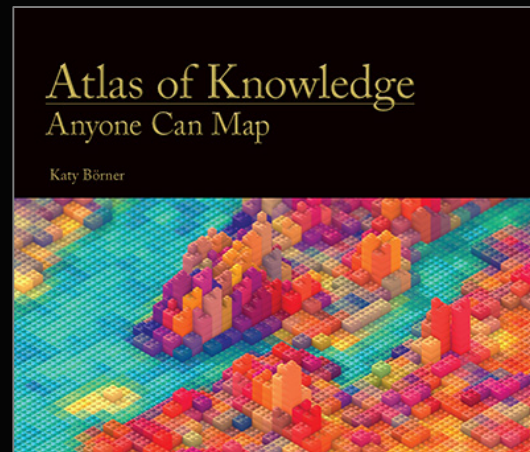
Science Forecast S1:E1



https://www.youtube.com/watch?v=lByX2_eb_QQ

Making Science & Technology Visualizations

Using a theoretically grounded visualization framework that defines key terminology and processes together with valid workflows and data mappings.


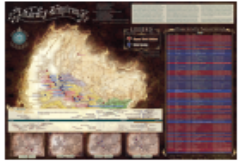


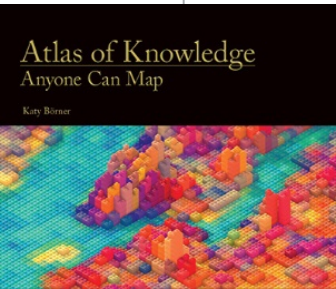


Register for free: <http://ivmooc.cns.iu.edu>

Tasks

LEVELS

	MICRO: Individual Level about 1–1,000 records page 6	MESO: Local Level about 1,001–100,000 records page 8	MACRO: Global Level more than 100,000 records page 10
TYPES			
Statistical Analysis page 44	 Knowledge Cartography page 135	 Productivity of Russian life sciences research teams page 105	 Science and Society in Equilibrium Number of scientists versus population and R&D costs versus GNP. page 103
WHEN: Temporal Analysis page 48	 Visualizing decision-making processes page 95	 Key events in the development of the video tape recorder page 85	 Increased travel and communication speeds page 83
WHERE: Geospatial Analysis page 52	 Cell phone usage in Milan, Italy page 109	 Victorian poetry in Europe page 137	 Ecological footprint of countries page 99
WHAT: Topical Analysis page 56	 Evolving patent holdings of Apple Computer, Inc. and Jerome Lemelson page 89	 Evolving journal networks in nanotechnology page 139	 Product space showing co-export patterns of countries page 93
WITH WHOM: Network Analysis page 60	 World Finance Corporation network page 87	 Electronic and new media art networks page 133	 World-wide scholarly collaboration networks page 157



See *Atlas of Science: Anyone Can Map*, page 5

Visual Analytics Certificate

Advance your skills in one of the most in demand careers through this online course focused on understanding and creating data visualizations that translate complex data into actionable insights.

Register: tinyurl.com/VACRegister



Learn from Experts

Connect with industry professionals and leading researchers.



Evolve Yourself

Gain *forever* knowledge and skill-up in powerful data visualization tools.



Make a Difference

Embrace data-driven decision-making in your personal and professional life.

<https://visanalytics.cns.iu.edu>

Visual Analytics Certificate

Instructor: Victor H. Yngve Distinguished Professor Katy Börner & CNS Team, ISE, SICE, IUB

Duration: 6 weeks x 5 hours = 30 hours (3 CEUs)

Format: Online | Theory and Hands-on Instruction, Concept Questions, Graded Assignments, Case Studies, Discussions

Covers:

Temporal, geospatial, topical (linguistic), network analyses and 60+ visualization types

Tools: Tableau, Gephi, BI

Real world case studies such as

- Acting on customer complaints data.
- Improving communication/traffic flows.
- Understanding web page usage.
- Visualizing online shopping behavior.
- Optimizing supply chains.
- Reducing customer/supplier churn.
- Monitoring emerging R&D areas.
- Workforce development planning.

The screenshot displays the IVC MOOC website. At the top, it features the CNS logo and the title "IVC MOOC Data Visualization Essentials". Below this, there are two introductory paragraphs: "Here's the story of a lovely lady, who was bringing up three very lovely girls. All of them had hair of gold. Like their mother. The youngest one is out." and "Here's the story of a man named Brady, who was busy as three boys of his own. They were four men, living all together, yet they were all alone. It's one day when the lady met this fellow...". A "Register" button is visible. The main content area is a grid of six thumbnails, each labeled "Visualizing Framework & Workflow Design" for a specific week. The thumbnails show various data visualizations: a circular flow diagram, a network graph, a map with red nodes, a world map with data points, a network graph with a legend, and a complex network visualization. At the bottom, there is a "Course Books" section with four book covers: "Visual Insights", "Atlas of Knowledge", "Atlas of Knowledge", and "Atlas of Science". Each book cover has an "Order" button. The footer of the website includes the text "© 2018 CNS Center of Intelligent Systems" and "Privacy | Terms of Service".

<https://visanalytics.cns.iu.edu>

Case Studies: Solving Real-World Challenges

Apply your new knowledge and skills in projects that require you to identify user needs and priorities; select the best data, algorithms, and workflows for temporal, geospatial, topical, and network case studies; communicate actionable insights using standard terminology; and deliver high-quality results on time and on budget.



Monitor S&T
Developments



Manage
Communication Flows



Optimize
Traffic Flows



Manage
Customer Feedback



Improve Network
Resilience



Develop
Workforce

Submit a Case Study

Collaborate with us on solutions that make a difference to you. Submit a project description, we will then implement efficient solutions and provide training materials that will speed adoption by key decision-makers.

Submit: tinyurl.com/VACCCaseStudy

<https://visanalytics.cns.iu.edu>

References

Börner, Katy, Chen, Chaomei, and Boyack, Kevin. (2003). **Visualizing Knowledge Domains**. In Blaise Cronin (Ed.), *ARIST*, Medford, NJ: Information Today, Volume 37, Chapter 5, pp. 179-255. <http://ivl.slis.indiana.edu/km/pub/2003-borner-arist.pdf>

Shiffrin, Richard M. and Börner, Katy (Eds.) (2004). **Mapping Knowledge Domains**. *Proceedings of the National Academy of Sciences of the United States of America*, 101(Suppl_1). http://www.pnas.org/content/vol101/suppl_1

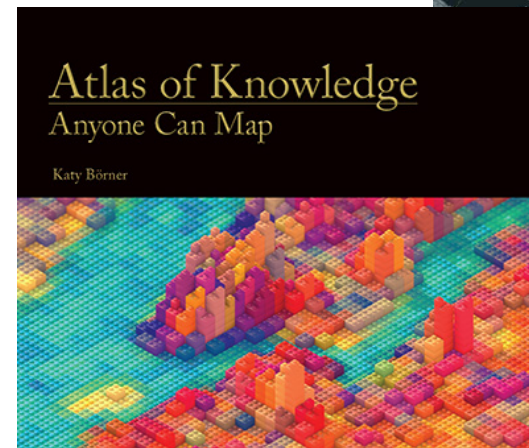
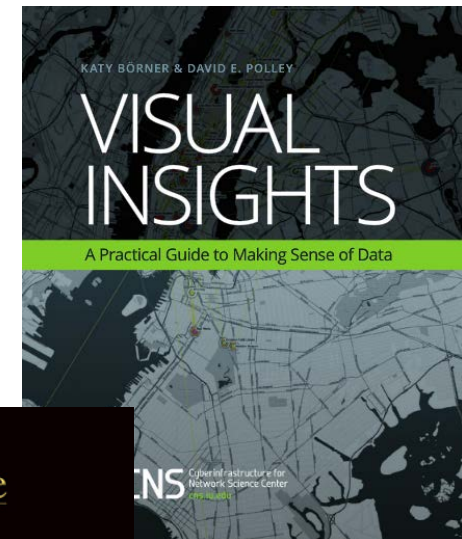
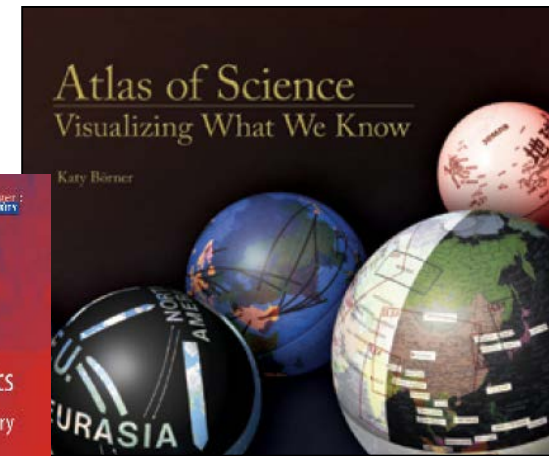
Börner, Katy (2010) **Atlas of Science: Visualizing What We Know**. The MIT Press. <http://scimaps.org/atlas>

Scharnhorst, Andrea, Börner, Katy, van den Besselaar, Peter (2012) **Models of Science Dynamics**. Springer Verlag.

Katy Börner, Michael Conlon, Jon Corson-Rikert, Cornell, Ying Ding (2012) **VIVO: A Semantic Approach to Scholarly Networking and Discovery**. Morgan & Claypool.

Katy Börner and David E Polley (2014) **Visual Insights: A Practical Guide to Making Sense of Data**. The MIT Press.

Börner, Katy (2015) **Atlas of Knowledge: Anyone Can Map**. The MIT Press. <http://scimaps.org/atlas2>






We work closely with clients to provide custom-made data, visualization, and software solutions

Research

 Open Data and Open Code for Big Science of Science Studies


Latest News

 Put your money where your citations are: a proposal for a new funding system (website accessed 9/05/13)

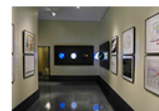
Upcoming Events

- OCT 1** Katy Börner attends PIUG 2013 Northeast Conference
- 10.13** Katy Börner presents Mapping Science Exhibit at WSSF
- 10.15** Ted Polley & Google Team present IVMOOC at EDUCAUSE
- 10.22** Katy Börner presents at the SciELO 15 Years Conference


Development

 Behind the scenes of the design and development of *AcademyScope*


Outreach

 See some of the most fascinating data visualizations in the world.


Videos

 Watch Katy Börner's full presentation from TEDxBloomington

Teaching

 Successful IVMOOC will be offered again in January of 2014

Our Products

 We work closely with clients to provide custom-made data, visualization, and software solutions

All papers, maps, tools, talks, press are linked from <http://cns.iu.edu>

These slides are at <http://cns.iu.edu/presentations.html>

CNS Facebook: <http://www.facebook.com/cnscenter>

Mapping Science Exhibit Facebook: <http://www.facebook.com/mappingscience>