

# Macrosopes: Interactive Visualizations for Actionable Insights

Katy Börner\* & Lisel Record @katycns

\*Victor H. Yngve Distinguished Professor of  
Intelligent Systems Engineering & Information Science  
Director, Cyberinfrastructure for Network Science Center  
School of Informatics, Computing, and Engineering  
Indiana University Network Science Institute (IUNI)  
Indiana University, Bloomington, IN, USA

*Sackler Colloquium  
Beckman Center, Irvine, California*

*December 4, 2017*



# Maps & Macroscopes

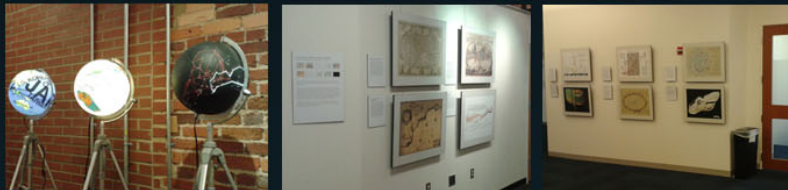
<http://scimaps.org>



101st Annual Meeting of the Association of American Geographers, Denver, CO.  
April 5th - 9th, 2005 (First showing of Places & Spaces)



University of Miami, Miami, FL.  
September 4 - December 11, 2014.



Duke University, Durham, NC.  
January 12 - April 10, 2015



The David J. Sencer CDC Museum, Atlanta, GA.  
January 25 - June 17, 2016.

100 maps and 12 macroscopes by 215 experts on display at 354 venues in 28 countries.

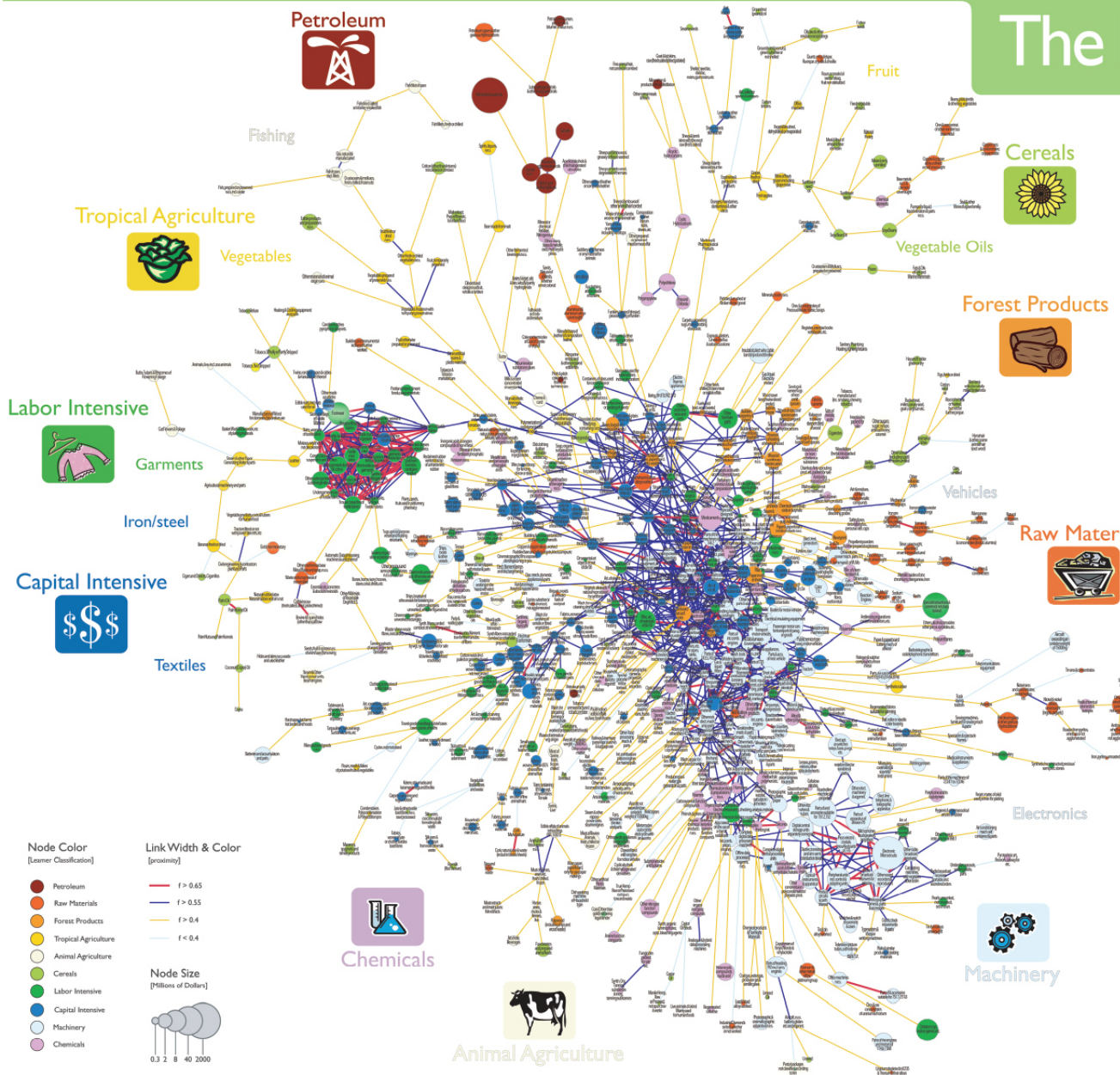
# Map of Scientific Collaborations from 2005-2009



Computed Using Data from Elsevier's Scopus

*Stream of Scientific Collaborations Between World Cities* - Olivier H. Beauchesne - 2012

# The Product Space



World trade flow data compiled by Feenstra et al. and available at the National Bureau of Economic Research were used to identify the complete co-export matrix of 775 industrial products for 1998-2000. A Maximum Spanning Tree (MST) algorithm was used to reduce the complete co-export matrix to less than 1% of the links. The resulting network, which combines the MST plus all links with a co-export frequency of at least 0.55, was laid out using a force-directed layout algorithm. Node sizes represent the value of traded products in millions of U.S. dollars. Their color corresponds to ten product groups identified using the Leamer classification. Each product class is labeled by an icon. Link color and width indicate the frequency of joint exports.

## Economic Footprint

■ Indicate Relevant Exports

Industrialized Countries



The network has a core-periphery structure with higher value product classes, e.g., machinery and chemicals, in the core and lower quality classes, e.g., fishing and garments, in the periphery. Products at the core of the network are highly interconnected while products in the periphery are sparsely interlinked.

East Asia Pacific



Each country has a certain product export footprint. Relevant exports by 'Industrialized Countries', 'East Asia Pacific' and 'Latin America & the Caribbean' are given on the right.

Latin America & the Caribbean



Traditional growth theory assumes that there is always a more sophisticated product within reach. However, given the core-periphery structure of the product space, the distances between products differ considerably.

Countries that operate at the core have capabilities to develop and manufacture a wide range of products. Yet, countries that mostly operate in the periphery of the product space have much fewer opportunities for diversification. A country's current footprint and the structure of the product space have a major impact on a country's future development.

Node Color  
[Leamer Classification]

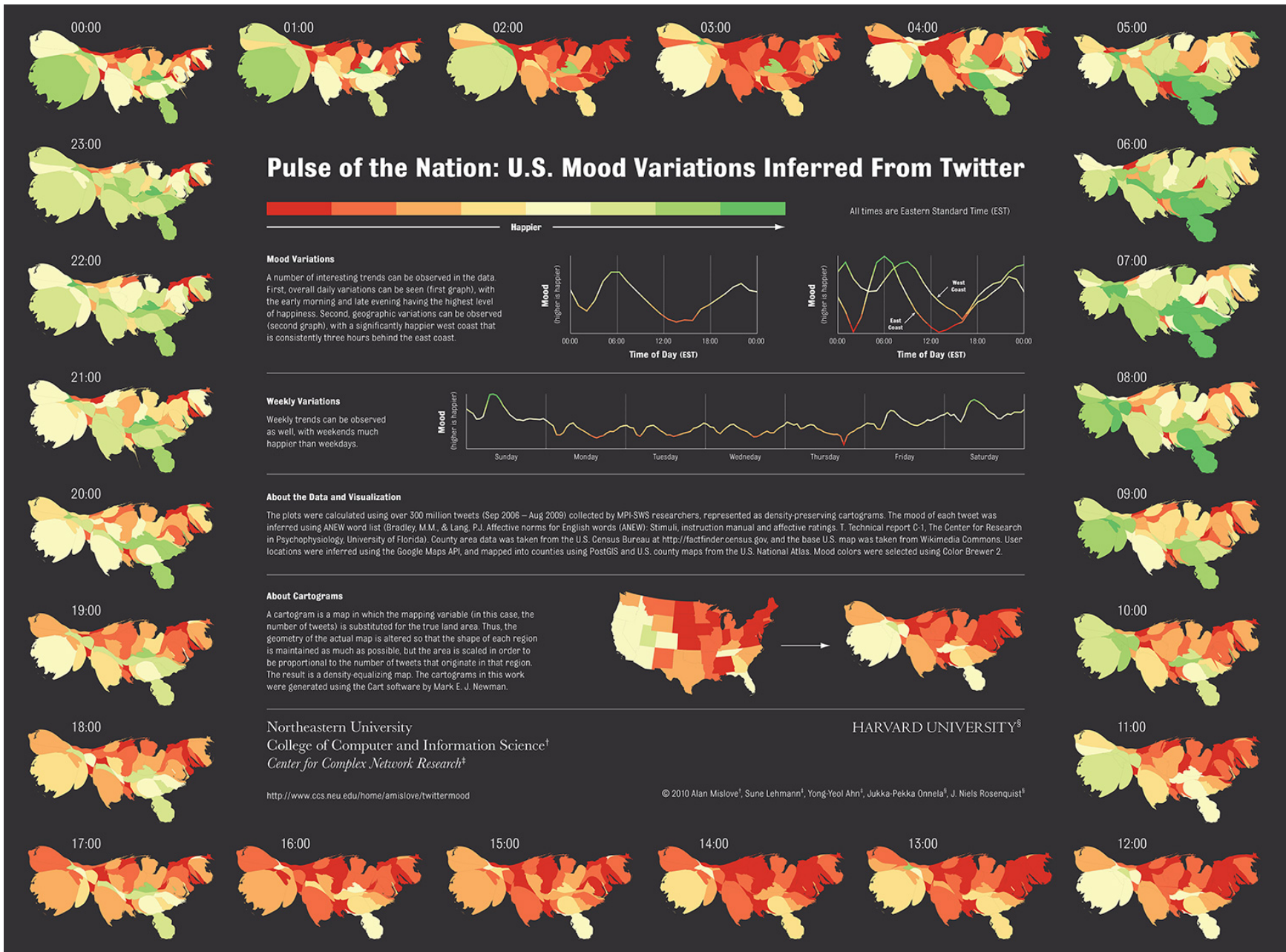
- Petroleum
- Raw Materials
- Forest Products
- Tropical Agriculture
- Animal Agriculture
- Cereals
- Labor Intensive
- Capital Intensive
- Machinery
- Chemicals

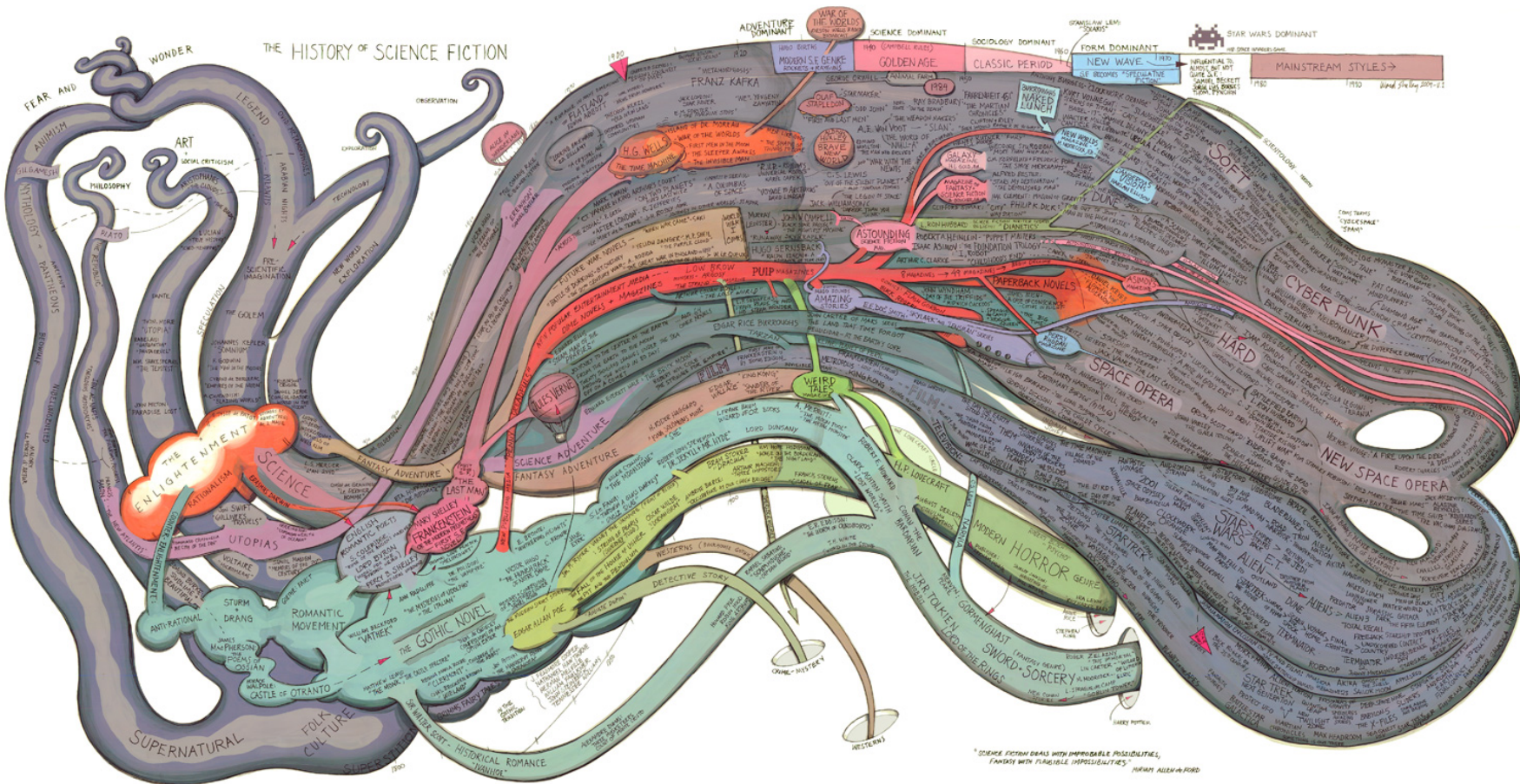
Link Width & Color  
[proximity]

- $f > 0.65$
- $f > 0.55$
- $f > 0.4$
- $f < 0.4$

Node Size  
[Millions of Dollars]







VII.10 History of Science Fiction - Ward Shelley - 2011

# Check out our **Zoom Maps** online!

VII.10  
History of Science Fiction, by Ward Shelley

BROOKLYN, NY 2011  
Courtesy of Ward Shelley Studio

Ward Shelley is an artist identified with the Williamsburg scene in Brooklyn, New York. This map plots the science fiction literary genre from its nascent roots in the late 18th century, emerging out of the data, here the narrative structure precedes and organizes the data. The map's structure is like trace roots to pre-historical sources and whose body of work, which birthed gothic fiction, source not only of Sci-Fi, but also of critical theory. The map progressed through a number of distinct periods, which are charted, citing hundreds of authors and works.

PLACES & SPACES  
MAPPING ARTISTS

Visit [scimaps.org](http://scimaps.org) and check out all our maps in stunning detail!

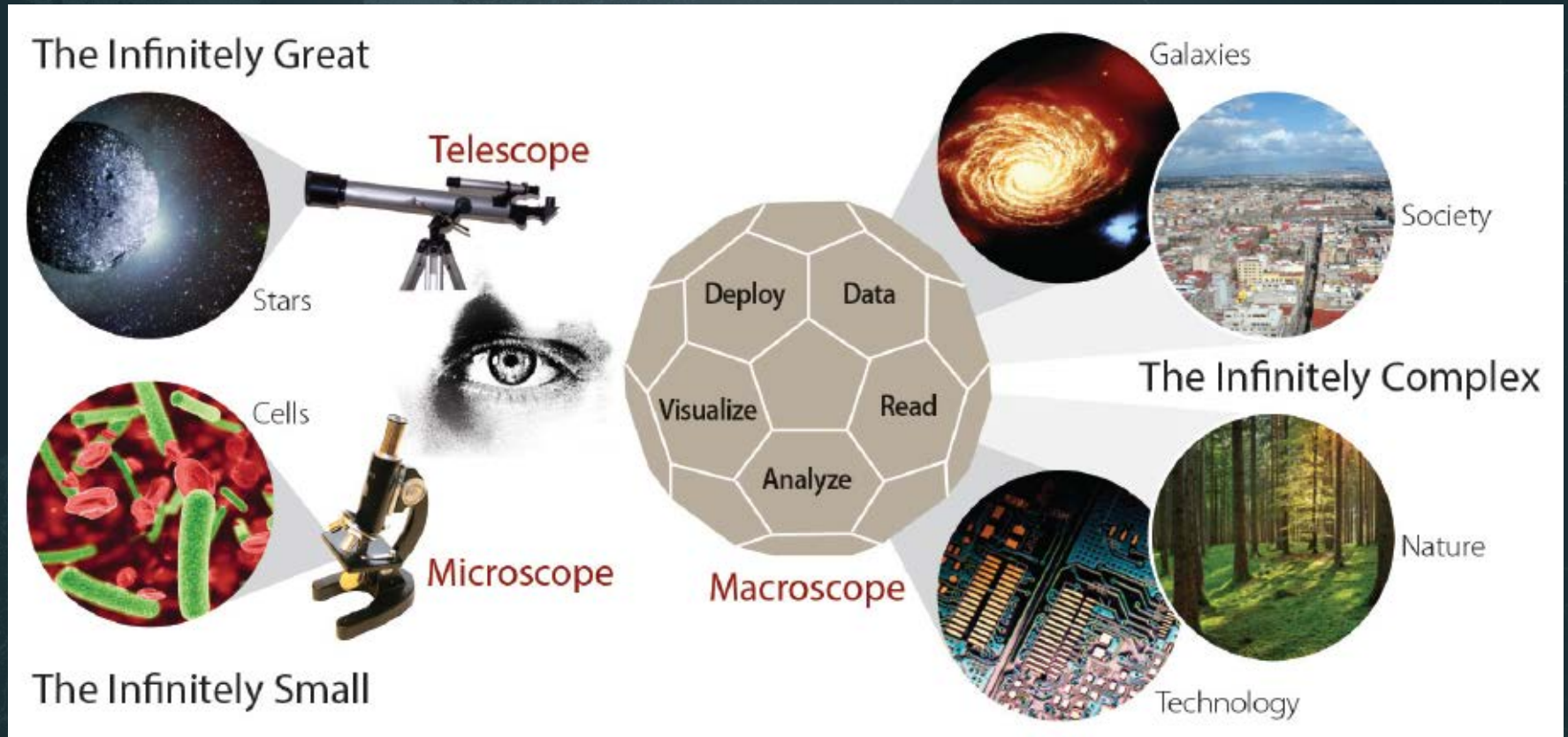


MAPS  
vs.  
MACROSCOPES

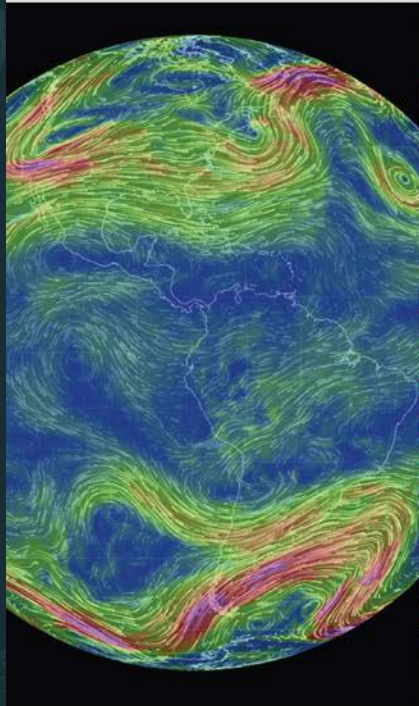




# Microscopes & Telescopes vs. MACROSCOPES



**i** **MACROSCOPES FOR INTERACTING WITH SCIENCE**



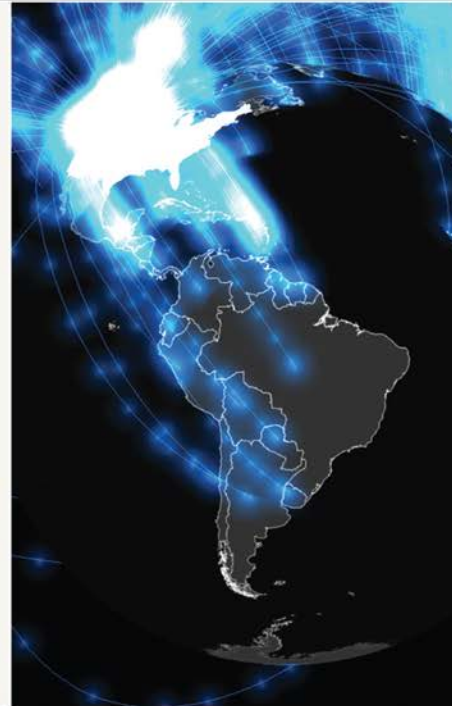
**Earth**

*Weather on a worldwide scale*



**AcademyScope**

*Exploring the scientific landscape*



**Mapping Global Society**

*Local news from a global perspective*

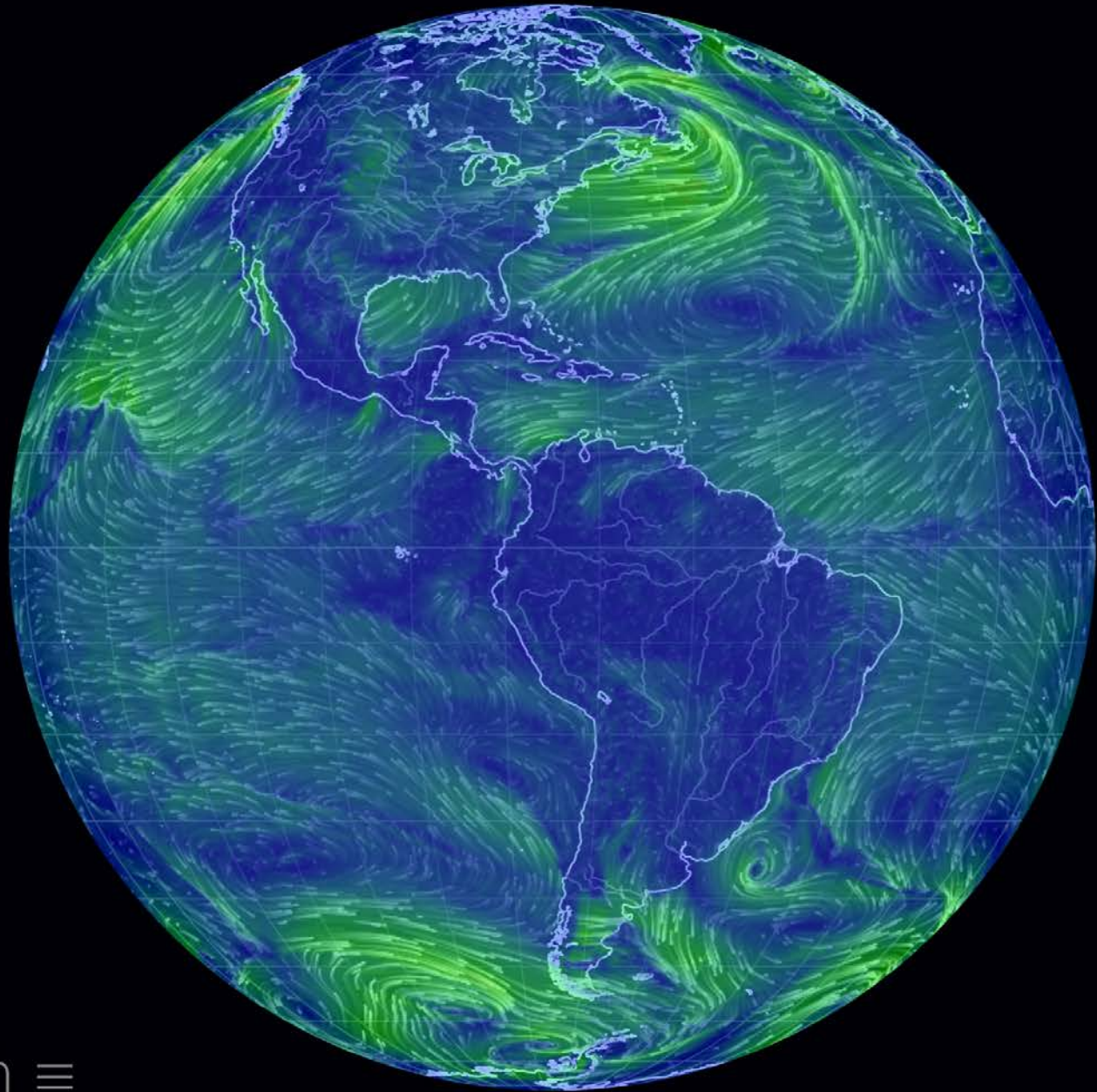


**Charting Culture**

*2,600 years of human history in 5 minutes*

**Iteration XI (2015): Macroscopes for Interacting with Science**

<http://scimaps.org/iteration/11>



earth ≡

*Earth* – Cameron Beccario

Top downloads



- Agriculture
- Behavioral and Social Sciences
- Biography and Autobiography
- Biology and Life Sciences
- Computers and Information Technology
- Conflict and Security Issues
- Earth Sciences
- Education
- Energy and Energy Conservation
- Engineering and Technology
- Environment and Environmental Studies
- Explore Science
- Food and Nutrition
- Health and Medicine
- Industry and Labor
- Math, Chemistry and Physics
- Policy for Science and Technology
- Space and Aeronautics
- Transportation

opic=282

# The News Co-occurrence Globe

An interactive visualization of how countries are mentioned together in the world's news media

+ - UNITED KINGDOM SEARCH ABOUT



2.92K  
COOCCUR%

**UNITED KINGDOM** cooccurrences in: 2,922%  
cooccurrences out: 80%

Timeline navigation: Feb 22, Mar 1, Mar 8, Mar 15, Mar 22, Mar 29, Apr 5, Apr 12, Apr 19, Apr 26, May 3, May 10, May 17, May 24



COOCCUR

IN%

OUT%



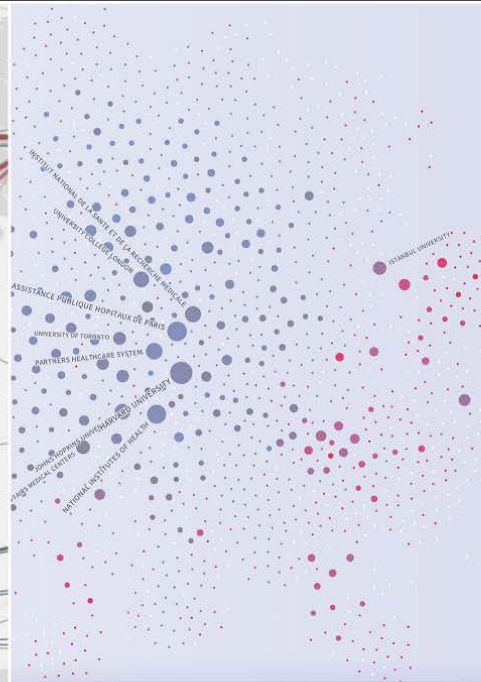
**Smelly Maps**

*Charting urban smellscapes*



**HathiTrust**

*Storehouse of knowledge*



**Excellence Networks**

*Publish or perish together*



**FleetMon Explorer**

*Tracking the seven seas*

## Iteration XII (2016): Macrosopes for Making Sense of Science

<http://scimaps.org/iteration/12>

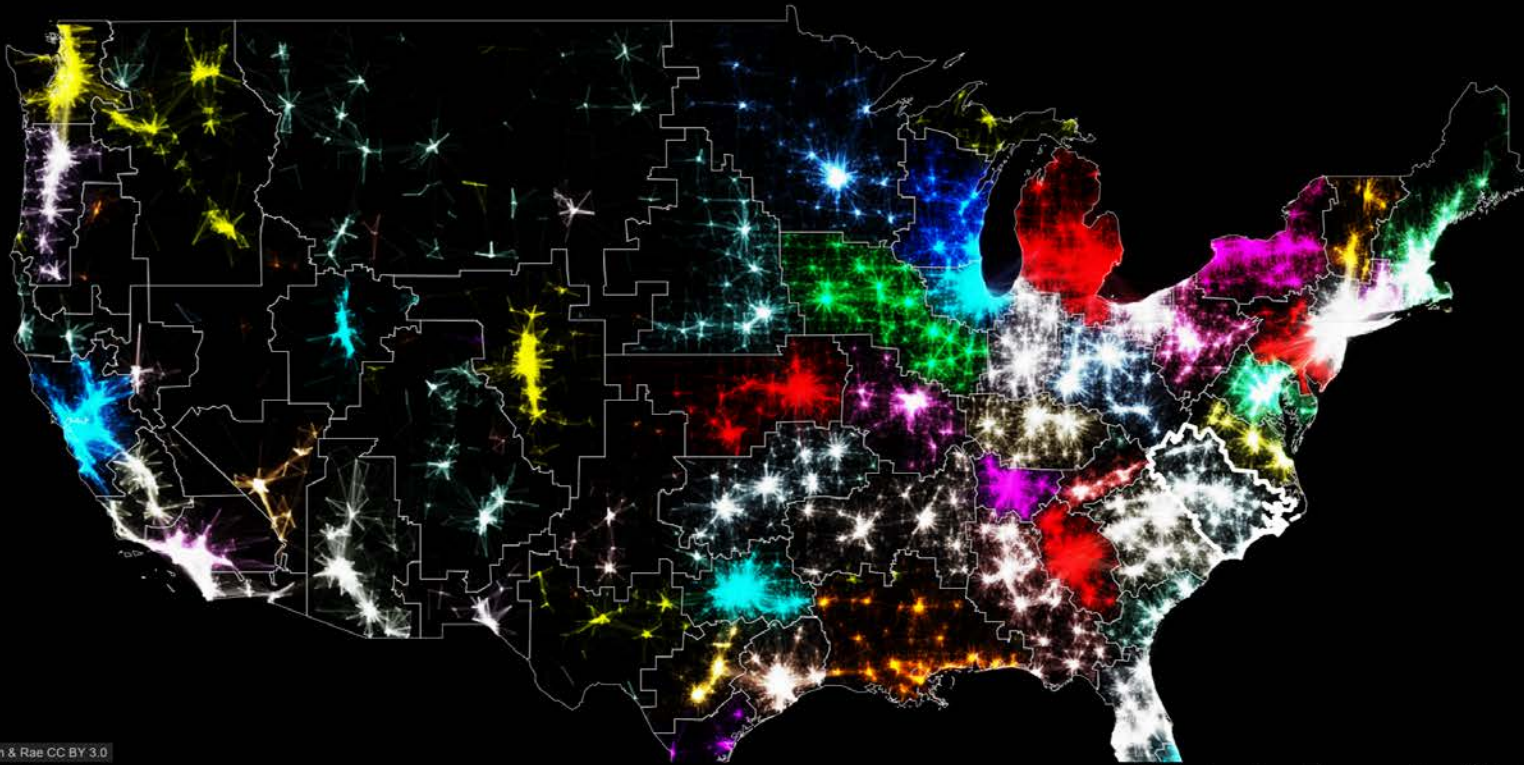


EMISSIONS NATURE FOOD ANIMALS WASTE

*Smelly Maps* – Daniele Quercia, Rossano Schifanella, and Luca Maria Aiello – 2015

## THE MEGAREGIONS OF THE US

Explore the new geography of commuter connections in the US.  
Tap to identify regions. Tap and hold to see a single location's commuted.



Leaflet | Nelson & Rae CC BY 3.0

This is the Roanoke (Raleigh) megaregion.



 **FleetMon**  
Tracking the Seven Seas



Monday, September 10, 2012

00:08

01:31

*FleetMon Explorer* – FleetMon – 2012

# References

Börner, Katy, Chen, Chaomei, and Boyack, Kevin. (2003). **Visualizing Knowledge Domains**. In Blaise Cronin (Ed.), *ARIST*, Medford, NJ: Information Today, Volume 37, Chapter 5, pp. 179-255. <http://ivl.slis.indiana.edu/km/pub/2003-borner-arist.pdf>

Shiffrin, Richard M. and Börner, Katy (Eds.) (2004). **Mapping Knowledge Domains**. *Proceedings of the National Academy of Sciences of the United States of America*, 101(Suppl\_1). [http://www.pnas.org/content/vol101/suppl\\_1](http://www.pnas.org/content/vol101/suppl_1)

Börner, Katy (2010) **Atlas of Science: Visualizing What We Know**. The MIT Press. <http://scimaps.org/atlas>

Scharnhorst, Andrea, Börner, Katy, van den Besselaar, Peter (2012) **Models of Science Dynamics**. Springer Verlag.

Katy Börner, Michael Conlon, Jon Corson-Rikert, Cornell, Ying Ding (2012) **VIVO: A Semantic Approach to Scholarly Networking and Discovery**. Morgan & Claypool.

Katy Börner and David E Polley (2014) **Visual Insights: A Practical Guide to Making Sense of Data**. The MIT Press.

Börner, Katy (2015) **Atlas of Knowledge: Anyone Can Map**. The MIT Press. <http://scimaps.org/atlas2>

