

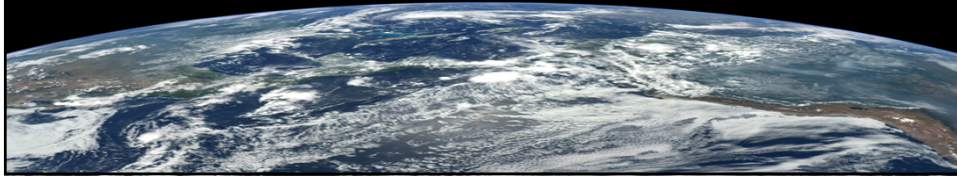
# Open Data, Open Source NRN Systems for Global Science Decision-Making:

## Let's Compete!

Katy Börner, Cyberinfrastructure for Network Science Center  
School of Informatics and Computing  
Indiana University, USA

*VIVO Conference, Austin, TX*

*August 8, 2014*



## Map of Scientific Collaborations from 2005-2009



Olivier H. Beauchesne, 2011.  
Map of Scientific Collaborations from 2005-2009.

Computed Using Data from Elsevier's Scopus

Visit *Mapping Science* exhibit at <http://scimaps.org> to see 100 S&T maps.

# LinkedIn: World's Largest Professional Network

<https://www.linkedin.com>

Launched in May 2003. More than 225 million users in June 2013.

The screenshot shows the LinkedIn profile of Katy Borner. At the top, there is a navigation bar with 'Home', 'Profile', 'Network', 'Jobs', and 'Interests'. A search bar is present with the text 'Search for people, jobs, companies, and more...'. A notification banner at the top left reads: 'Don't get locked out of your account! Please add another email to make sure you can always sign in. This is important.' The profile header includes the name 'Katy Borner' and 'Member since: February 27, 2005'. Below this, there are sections for 'Primary Email Change/Add' (katy@indiana.edu), 'Payment' (View purchase history), and 'Password Change'. A 'Profile' section is visible at the bottom left. On the right side, there are 'Invitations (368)' and 'Messages (26)'. The 'Invitations' list includes: Eric Archambault (President and CEO, Science-Metrix) on Oct 20; Jordan Lippman (Founder and Principal Scientist at NameGames, LLC) on Oct 17; and Julie Hewett, CMP (Owner JullNet Solutions, LLC - An Association & Event Management Company) on Oct 17. The 'Messages' list includes: Marc Smith (invites you to join his group) on Sep 8; and LinkedIn (Geoffrey Hobart has added you...) on Jul 9. A yellow banner at the bottom of the screenshot reads 'Exemplary Expert Networking Service'.

# ResearchGate GmbH

<https://www.researchgate.net>

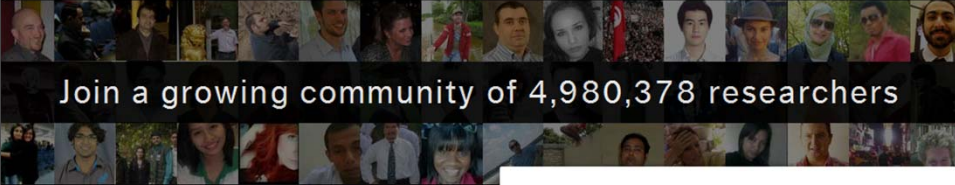
Launched in May 2008, has a user base of 2.3 million scientists worldwide in Aug. 2013

The screenshot shows the ResearchGate user interface. At the top, there is a navigation bar with 'ResearchGate', 'Q&A', 'Publications', 'Projects', and 'more'. A search bar is present with the text 'Search'. Below the navigation bar, there are two main sections: 'ASK A QUESTION' and 'ADD YOUR PUBLICATIONS'. A notification banner at the top right reads: 'Your profile is 65% complete.' Below this, there is a 'YOUR NETWORK ACTIVITY' section with a list of recent activities: Stasa Milojevic followed Cassidy Sugimoto and you (21h); Mark Musen followed John Fox (1d); Cassidy Sugimoto followed 26 researchers, including Mike Thelwall and Carol Tenopir (2d); and Robert Light updated their degree: BS (Computer Science), MLS (2d). A 'Live Feed' section is visible at the bottom left, showing a post by Cassidy Sugimoto: 'Cassidy Sugimoto added 2 publications: Article: Venue-author-coupling: a novel measure of identifying disciplines through author communities' (42m). A yellow banner at the bottom of the screenshot reads 'Exemplary Expert Networking Service'.

# Academia.edu—Share Research

<http://www.academia.edu>  
 Launched in Nov 2010.

Academia.edu  Home Log In Sign Up



Join a growing community of 4,980,378 researchers

**Academia.edu is a place to share and follow research**

- Share your papers
- See analytics on your profile and papers
- Follow other people in your field

**Sign Up to Academia.edu**

Connect with Facebook

Connect with Google


or

First Name

**Exemplary Expert Networking Service** 5

# Google Scholar

<http://scholar.google.com>  
 Launched in Nov. 2011. Has “unknown” number of profiles.



**Anurag Acharya**  
 Google Inc  
 scholarly communication - search engines  
 Verified email at google.com

Google scholar

Search Authors

My Citations - Help

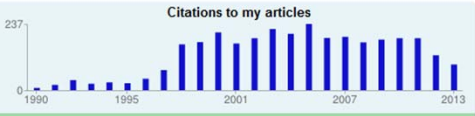
Follow this author  
 5 Followers  
 Follow new articles  
 Follow new citations

Co-authors  
 Joel Saltz  
 Jeff Dean  
 Alan Sussman  
 Simon Tong  
 Steve Lawrence  
 Huican Zhu  
 Milind Tambe  
 Sanjeev Setia  
 Bongki Moon  
 C.J. Paul (CJ)  
 Sanjay Ghemawat  
 Jeffrey Hollingsworth  
 Maximilian Ibel  
 Tao Yang

**Citation indices**

	All	Since 2008
Citations	3209	946
h-index	28	15
i10-index	41	20

**Citations to my articles**



Title / Author	Cited by	Year
<b>Active disks: Programming model, algorithms and evaluation</b> A Acharya, M Uysal, J Saltz ACM SIGPLAN Notices 33 (11), 81-91	361	1998
<b>Sumatra: A language for resource-aware mobile programs</b> A Acharya, M Ranganathan, J Saltz Mobile Object Systems Towards the Programmable Internet, 111-130	258	1997
<b>History-based access control for mobile code</b> G Edjlali, A Acharya, V Chaudhary Proceedings of the 5th ACM conference on Computer and communications ...	222	1998

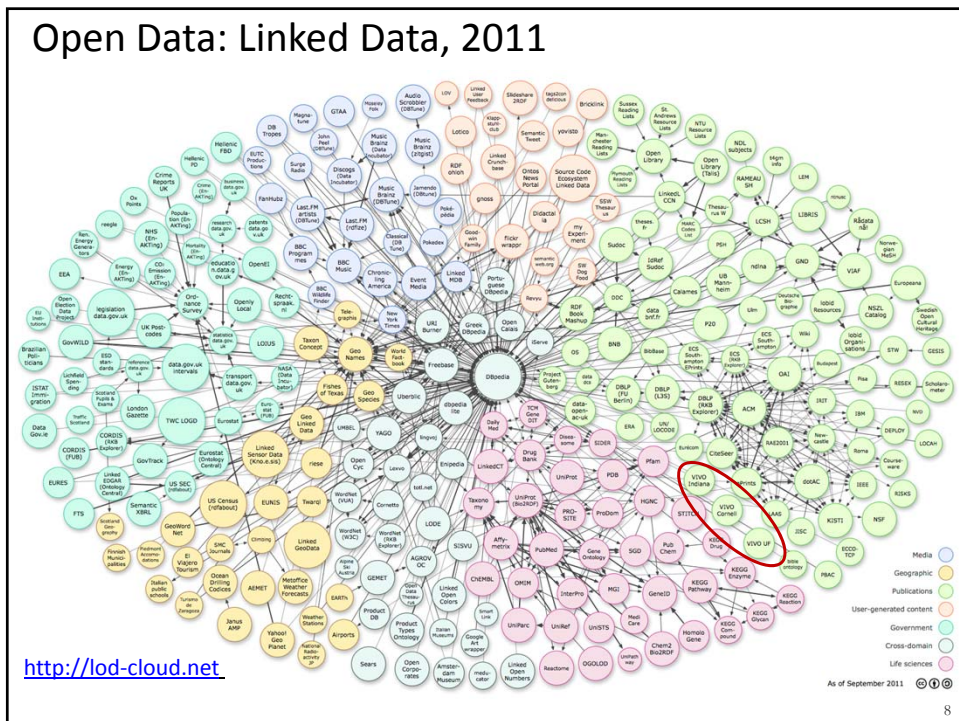
**Exemplary Expert Networking Service** 6

### International Researcher Network Visualization 1.0

CNS Cyberinfrastructure for Network Science Center [cns.iu.edu](http://cns.iu.edu)

<http://nrr.cns.iu.edu>

*Light, Robert, Chin Hua Kong, and Katy Börner. 2013. "An Automated System for Tracking the Growth of Expert Profiling Systems". Joint Conference on Digital Libraries (JCDL).*



## Expert Networking Services—60 More

This table provides general information for each tool: name, developing institution, external links to information, whether the code is Open Source and known adopters of the software.

Research Networking Tool	Link to Product Page	Developer/Owner	Open Source	Adopters
Activity Insight	<a href="#">Activity Insight</a>	Digital Measures	No	USC Marshall School of Business
C-IKNOW <sup>SM</sup>	<a href="#">C-IKNOW</a>	Science of Networks in Communities (SONIC) - Northwestern University	Yes	National Cancer Institute, National Science Foundation
Collaborative Partnership / Profile System	<a href="#">Collaborative Partnership and Research Expertise at UT Arlington</a>	University of Texas at Arlington	Yes	UT Arlington, UT Pan American, University of North Texas Health Science Center, UT El Paso, UT San Antonio, UT Tyler, UT Health Science Center, University of North Texas, UT Dallas, UT Health Center at Tyler, Texas Christian University, (plans to add Gulf Coast Consortia: Rice University, Baylor College of Medicine)
Community Academic Profiles - CAP	<a href="#">Community Academic Profiles</a>	Stanford University	No	Stanford University
Curvita <sup>TM</sup> Profile Manager	<a href="#">Curvita Profile Manager</a>	SolMed Solutions	No	University of North Carolina
CUSP - Columbia University Scientific Profiles	<a href="#">CUSP</a>	Columbia University	No	Columbia University
Digital Vita	<a href="#">DigitalVita</a>	Center for Dental Informatics - University of Pittsburgh	Yes	University of Pittsburgh, Pitt Health Sciences Center
Elsevier's SciVal Experts (formerly Collexis Expert Profiling)	<a href="#">SciVal Experts</a>	Elsevier	No	45+ implementations worldwide containing profiles for researchers at 65+ institutions. Customers include Johns Hopkins University, Memorial Sloan-Kettering, Northwestern University, REACH NC, University of Michigan, University of Texas MD Anderson Cancer Center, and several institutions in Asia-Pacific, Europe and Latin America. See SciVal

[http://en.wikipedia.org/wiki/Comparison\\_of\\_Research\\_Networking\\_Tools\\_and\\_Research\\_Profiling\\_Systems](http://en.wikipedia.org/wiki/Comparison_of_Research_Networking_Tools_and_Research_Profiling_Systems)

9

Let's Compete!

## Let's Compete for

The best system/functionality that truly addresses the insights **needs decision makers really have:**

- **Foresight + Context:** What areas are emerging, merging, dead? Where will I achieve highest return on investment of time, money, compassion?
- **LOCAL Strategic Decision Making:** What is the unique value proposition of my institution/region? What strengths and gaps exist and how can we overcome challenges and embrace opportunities?
- **GLOBAL Networks and Insight:** Who are the leading experts, institutions, regions? How are they connected and what R&D do they perform?

*Colglazier & Lyons (2014) The United States Looks to the Global Science, Technology and Innovation (STI) Horizon. Science & Diplomacy on-line journal of the American Association for the Advancement of Science (AAAS).*

11

## My guess?

**Winners will be systems that create/use de-facto standards for**

- Easy to map/crosswalk and cross-search data structures
- Plug-and-play data cleaning, pre-processing, analysis modules
- Easy to customize and use user interfaces (incl. visualizations, data exports)

**Likely, winning systems will**

- Promote (partially) open data and open code
- Easy harvesting and ingest of major publication datasets, e.g., MEDLINE, Elsevier, Reuters, SciELO, others.
- Inter-platform compatibility—VIVO, Profiles, SciVal Experts, Loki.
- Be part of federated search tools, Direct2Experts, CTSAconnect, and SciVal Community, etc.
- Support/use DOIs, author identifiers, e.g., ORCID, SciENCv

**Do you want to level up to the next challenge?**

12

## Let's Start With Search

Find experts

- At \*my\* institution
- In the U.S.
- On Earth

That work on topic "X."

Let's try this for 'microbiome' research.

13

Example: Search for 'Microbiome'

### Using existing systems to identify expertise on 'Microbiome'

- CTSA DIRECT2Experts a pilot national network to demonstrate interoperability among research-networking platforms: <http://direct2experts.org>
- NSF Award Search: <http://www.nsf.gov/awardsearch>
- NIH Reporter: <http://projectreporter.nih.gov>
- European Commission CORDIS FP7 data: [http://cordis.europa.eu/fp7/projects\\_en.html](http://cordis.europa.eu/fp7/projects_en.html)



[http://academy.osm.org/images/stories/documents/FAQ\\_Human\\_Microbiome.pdf](http://academy.osm.org/images/stories/documents/FAQ_Human_Microbiome.pdf)

#### To support

- Foresight + Context
- LOCAL Strategic Decision Making
- GLOBAL Networks and Insight

## DIRECT2Experts

Distributed Interoperable Research Experts Collaboration Tool

A Federated Network of Biomedical Research  
DIRECT-ly Supported by Research

Home
About
Phase 1 - Aggregate Search
Phase 2 - Linked Open Data
New! - Integrated Search
Participants
JAMIA

---

#### Phase 1 - Aggregate Search

Enter a search phrase, such as "informatics" in the form below to search for experts.

Find Experts:

Below are the number of matching people at participating institutions. Click an institution name to view the list of people. As you move your mouse over the different institution names, you will see important notes about that institution's data and a site preview on the right.

Institution	Matches
Albert Einstein College of Medicine	13
Arizona State University	4
Arthritis Foundation	8
Baylor College of Medicine	X
Boston University	X
Case Western Reserve University	19
Cornell University	34
CTSI at Children's National	7
David Geffen School of Medicine at UCLA	0
Educatio Társadalmi Szolgáltató Nonprofit Kft.	2
Georgia Regents University	4
Harvard University	187
Indiana CTSI	0
Indiana University School of Medicine	6
Instituto Politecnico Nacional	0
John Hopkins University	24
...	.

#### Data Comments

Harvard University

#### Site Preview

**HARVARD CATALYST**

THE HARVARD CLINICAL AND TRANSLATIONAL SCIENCE CENTER

808 experts found

Institution	Matches
Harvard University	187
University of Colorado Profiles	66
University of Florida	64
University of Michigan	44
Cornell University	34
University of Minnesota - Twin Cities Campus	33
University of Washington	27
John Hopkins University	24
UC Davis Health System	22
Case Western Reserve University	19
The University of Arizona	19
University of Maryland	17
University of Miami	17

16



**DIRECT2Experts**  
Distributed Interoperable Research Experts Collaboration Tool

A Federated Network of Biomedical Research  
DIRECT-ly Supported by Research

Home | About | Phase 1 - Aggregate Search | Phase 2 - Linked Open Data | **New!** - Integrated Search | Participants | JAMIA

**HARVARD CATALYST**  
THE HARVARD CLINICAL AND TRANSLATIONAL SCIENCE CENTER

- About Harvard Catalyst
- National CTSA Consortium
- Contact Us
- News
- Events
- Spotlights

Search Harvard Catalyst

**People & Collaboration** | Consulting & Advice | Education & Training | Funding | Research Resources | Programs

**Harvard Catalyst Profiles**

Keywords:   
Last Name:   
Institution:

[More Search Options](#)

**Search Results (8)** [More Search Options](#)

Click the Why column to see why an item matched the search.

Match	Type	Why
Microbiome, disease, and immune cell regulation in humans	Mentoring - Current Student Opportunity	<a href="#">Why?</a>
Searching for Rare Bacterial Phyla in the Human Oral Microbiome	Mentoring - Completed Student Project	<a href="#">Why?</a>
Identification of phenotypic subtypes of hidradenitis suppurativa through investigation of re-epithelialization and skin microbiota	Mentoring - Completed Student Project	<a href="#">Why?</a>
Is Food Allergy an Infectious Disease? Surveying the Microbiome in Food Allergy	Mentoring - Completed Student Project	<a href="#">Why?</a>
Composition of the Supra and Sub Gingival Microbiota in Adult Periodontitis in Subjects who are current Smokers or who Have Never Smoked	Mentoring - Completed Student Project	<a href="#">Why?</a>
Composition of the Supra and Subgingival Microbiota in Adult Periodontitis Subjects Who are current Smokers or Who Have Never Smoked	Mentoring - Completed Student Project	<a href="#">Why?</a>
ENDOBIONT T. VAGINALIS VIRUSES WITH IMPACT ON WOMEN'S HEALTH	Mentoring - Current Student Opportunity	<a href="#">Why?</a>

**Search Criteria**  
microbiome

**Search Options**  
[Modify Search](#)  
[Search Other Institutions](#)

**Filter by Type**  
All (499)  
People (187)  
Research (303)  
Concepts (1)  
**Mentoring (8)**

**Institutions**

- [Harvard Med School](#) (15124)
- [Northwestern Med School](#) (3630)
- [U. of Minnesota](#) (4388)
- [U. California at San Fran](#) (8874)
- [Cornell](#) (1)
- [Cornell Medical](#) (32)
- [Ponce School of Med](#) (3)
- [Scripps Research Institute](#) (22)
- [Univ. of Florida](#) (100)
- [Washington U at St. Louis](#) (2635)
- [Mendeley](#) (352)

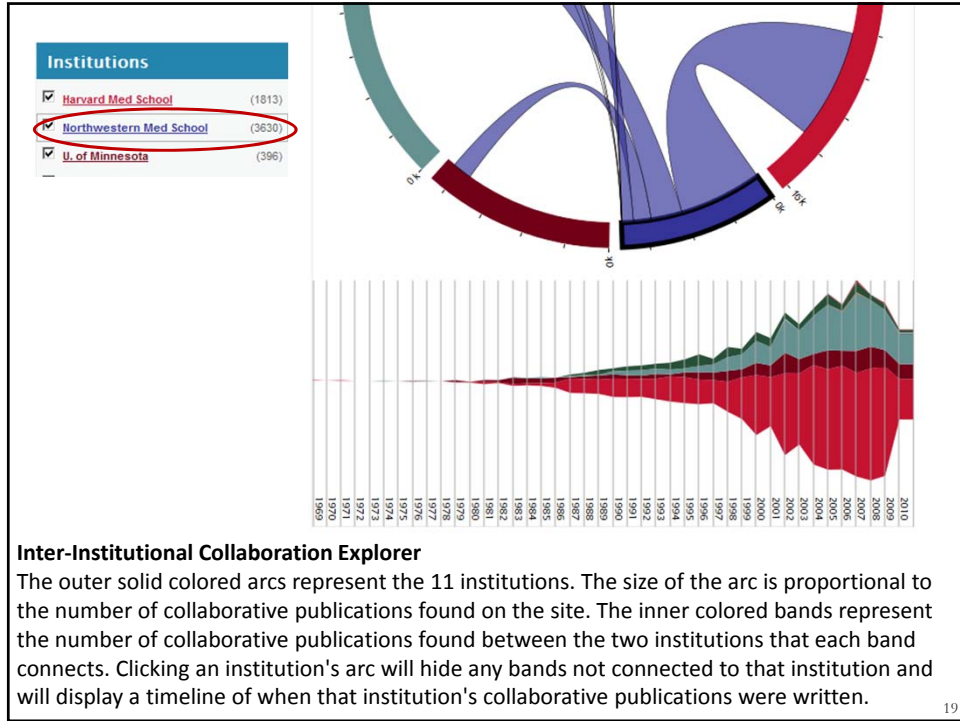
**Inter-Institutional Collaboration Explorer**

This visualization shows information about “collaborative publications” found at 2 or more Researcher Networking websites.

The idea that institutions don't work together and that biomedical research is conducted in silos is not true. Researchers, even when separated by great distances, are in fact willing to work together, and this visualization demonstrates that they often do.

Contact: Nick Benik ([nbenik@gmail.com](mailto:nbenik@gmail.com)), Harvard Medical School, Boston, MA.

URL: <http://xcite.hackerceo.org/VIVOviz>



**National Science Foundation**  
WHERE DISCOVERIES BEGIN

SEARCH

FUNDING AWARDS DISCOVERIES NEWS PUBLICATIONS STATISTICS ABOUT NSF FASTLANE

Simple Search | Advanced Search | Popular Searches | Download Awards | Send Comments | Award Search Help

Search award for:  Search

Export up to 3,000 Awards: CSV | XML | Excel | Text | Email this Link | Export All Results

Sort By: Relevance | Results size: 30 per page | Table | List | Page 1 of 2 | Displaying 1 - 30 of 54

**You Searched For:** microbiome

**Active Awards:** true

**Refined by:**

**State:** Alabama(1), California(2), Connecticut(1), District of Columbia(1), Delaware(2)

**NSF Organization:** OFFICE OF THE DIRECTOR(1), Directorate for Mathematical & Physical Sciences(7), Directorate for Social, Behavioral & Economic Sciences(4), Directorate for Computer & Information Science & Engineering(2), Directorate for Geosciences(5), Directorate for Engineering(7), Directorate for Biological Sciences(22), Directorate for Education & Human Resources(6)

**Award Amount:** Less than or equal \$50,000(7), Between \$50,001 - \$100,000(2), Between \$100,001 - \$500,000(21), Between \$500,001 - \$1,000,000(16), More than \$1,000,000(8)

**Award Instrument:** Standard Grant(37), Continuing Grant(15), Fellowship(2)

**Search Results:**

- Exploring the Niche Space of Human Microbiome Functions through Convex Geometry and Evolutionary Genomics**  
Award Number:10469303; Principal Investigator:Katherine Pollard; Co-Principal Investigator: Organization:The J. David Gladstone Institutes; NSF Organization:DMS Award Date:08/15/2011; Award Amount:\$1,508,535.00; Relevance:43.04;
- DISSERTATION RESEARCH: Is richer always better? Testing the biotic resistance hypothesis in ornamental fish microbiomes**  
Award Number:1402051; Principal Investigator:Linda Amaral Zetler; Co-Principal Investigator:Katherine Smith, Victor Schmidt; Organization:Marine Biological Laboratory; NSF Organization:DEB Award Date:07/01/2014; Award Amount:\$20,865.00; Relevance:43.04;
- ATD: Algorithms for the analysis of microbiomes**  
Award Number:1043089; Principal Investigator:Khalid Sayood; Co-Principal Investigator:Steven Hinrichs; Organization:University of Nebraska-Lincoln; NSF Organization:DMS Award Date:09/15/2011; Award Amount:\$246,367.00; Relevance:43.04;
- DIMENSIONS: Collaborative Research - Uncovering the novel diversity of the copepod microbiome and its effect on habitat invasions by the copepod host**  
Award Number:1046371; Principal Investigator:Joana Carneiro da Silva; Co-Principal Investigator: Organization:University of Maryland at Baltimore; NSF Organization:OCE Award Date:11/01/2010; Award Amount:\$1,640,357.00; Relevance:43.04;
- SusChEM: Converting Urban Wastes into Longer Chain Chemicals**  
Award Number:1236186; Principal Investigator:Largus Angenent; Co-Principal Investigator: Organization: Cornell University; NSF Organization:CBET Award Date:09/01/2013; Award Amount:\$391,300.00; Relevance:43.04;
- Adaptation to diet and its impact on the gut microbiome and genomic variation**  
Award Number:1370893; Principal Investigator:Sarah Trötschel; Co-Principal Investigator: Organization:University of Pennsylvania; NSF Organization:BCS Award Date:08/15/2013; Award Amount:\$306,600.00; Relevance:43.04;
- DIMENSIONS: Collaborative Research - Uncovering the novel diversity of the copepod microbiome and its effect on habitat invasions by the copepod host**  
Award Number:1046372; Principal Investigator:Carol Lee; Co-Principal Investigator: Organization:University of Wisconsin-Madison; NSF Organization:OCE Award Date:11/01/2010; Award Amount:\$76,261.00; Relevance:43.04;
- EFRI-MIKS: Control of Signaling and Function by Design with Spatially Pre-Structured Microbial Communities**  
Award Number:1370893; Principal Investigator:Suzan Imragli; Co-Principal Investigator: Sarkis Mazmanian, Alexander Chervovskiy, Folker Meyer, Christopher Henry; Organization:California Institute of Technology; NSF Organization:EFRI Award Date:09/01/2011; Award Amount:\$1,998,143.00; Relevance:41.65;
- CAREER: Annotating the Microbiome using Machine Learning Methods**  
Award Number:1252318; Principal Investigator:Huzefa Rangwala; Co-Principal Investigator: Organization:George Mason University; NSF Organization:ISE Award Date:03/01/2012; Award Amount:\$50,000.00; Relevance:41.65;
- The Effect of the Microbiome on the Rice Transcriptome**  
Award Number:0923806; Principal Investigator:Harsh Bais; Co-Principal Investigator:Julian Maloof, Jonathan Eisen, Venkatesan Sundaresan;

National Science Foundation  
WHERE DISCOVERIES BEGIN

HUMAN MICROBIOME  
FAQ

69 NSF projects found.  
They were awarded to 53 unique institutions.

Institution	#Awards	Institution	Sum of Awarded AmountToDate
University of Illinois at Urbana-Champaign	3	University of Illinois at Urbana-Champaign	3,263,277
University of Texas at Austin	3	University of North Carolina at Chapel Hill	2,496,169
University of Wisconsin-Madison	3	University of Delaware	2,143,438
Cornell University	2	University of Connecticut	2,000,000
Duke University	2	California Institute of Technology	1,998,143
Gordon Research Conferences	2	University of Wisconsin-Madison	1,758,524
Marine Biological Laboratory	2	University of Maryland at Baltimore	1,734,624
Michigan State University	2	University of Utah	1,700,000
SUNY at Stony Brook	2	The J. David Gladstone Institutes	1,508,535
University of Delaware	2	Cornell University	1,342,609
University of Maryland at Baltimore	2	University of Washington	1,019,366
University of Nebraska-Lincoln	2	Florida Agricultural and Mechanical University	997,214
University of Washington	2	Washington State University	950,000
		Bigelow Laboratory for Ocean Sciences	900,000
		University of Hawaii	842,000
		TERC Inc	822,919
		Michigan State University	779,220
		University of Nebraska-Lincoln	741,685
		University of Texas at Austin	726,806
		Marine Biological Laboratory	723,528
		University of Miami School of Medicine	708,360

21

National Science Foundation  
WHERE DISCOVERIES BEGIN

HUMAN MICROBIOME  
FAQ

69 NSF projects found.  
They were awarded to 53 unique institutions.

Alaska (10% actual area)

Puerto Rico

Hawaii (50% actual area)

Area (Linear)  
AwardedAmountToDate  
3,263,277  
1,634,174  
5,070

22

NIH Research Portfolio Online Reporting Tools (RePORT)

Search: microbiome

HOME | ABOUT RePORT | FAQs | GLOSSARY |

QUICK LINKS RESEARCH ORGANIZATIONS WORKFORCE FUNDING REPORTS LINKS

Home > RePORTER > Search Results

### Search Results

Back to Query Form Save Query Share Query

Export All Projects

PROJECTS PUBLICATIONS PATENTS CLINICAL STUDIES DATA & VISUALIZE MAP LINKS NEWS & MORE

There were 537 results matching your search criteria. Records per page: 25 Show/Hide Search Criteria

Click on the column header to sort the results. 1 2 3 4 ... 20 21 22 Page 1 of 22 Next Last

Application Type: Act: Activity Code; Project: Admin IC, Serial No.; Year: Support Year/Supplement/Amendment

T	Act	Project	Year	Sub #	Project Title	Contact PI/ Project Leader	Organization	FY	Admin IC	Funding IC	FY Total Cost by IC	Similar Projects
<input type="checkbox"/>	5	R01	NR014792	02	<a href="#">A MULTOMIC APPROACH TOWARDS DECRYPTING THE INFLUENCE OF THE MICROBIOME ON PDE</a>	<a href="#">AAGAARD-TILLERY, KIERSTI MARE</a>	BAYLOR COLLEGE OF MEDICINE	2014	NINR	NINR	\$539,616	
<input type="checkbox"/>	4	UH2	HG007008	02	<a href="#">HIV/H3 AFRICA BIODEPOSITORY INITIATIVE</a>	<a href="#">ABIMKU, ALASHLE G.</a>	INSTITUTE OF HUMAN VROLOGY	2013	NHGRI	NICHD OD	\$19,400 \$97,000	
<input type="checkbox"/>	1	U19	AH10819	01	6908	<a href="#">GENOMICS OF ANTIBIOTIC RESISTANCE IN BACTERIAL PATHOGENS</a>	<a href="#">ADAMS, MARK D</a>	2014	NIAD		\$310,095	
<input type="checkbox"/>	1	U19	AH10819	01	6912	<a href="#">TECHNOLOGY CORE</a>	<a href="#">ADAMS, MARK D</a>	2014	NIAD		\$1,239,523	

537 NIH awards found on 7/19/2014.  
544 NIH awards found on 7/20/2014. Omitted 34 records with missing values.

23

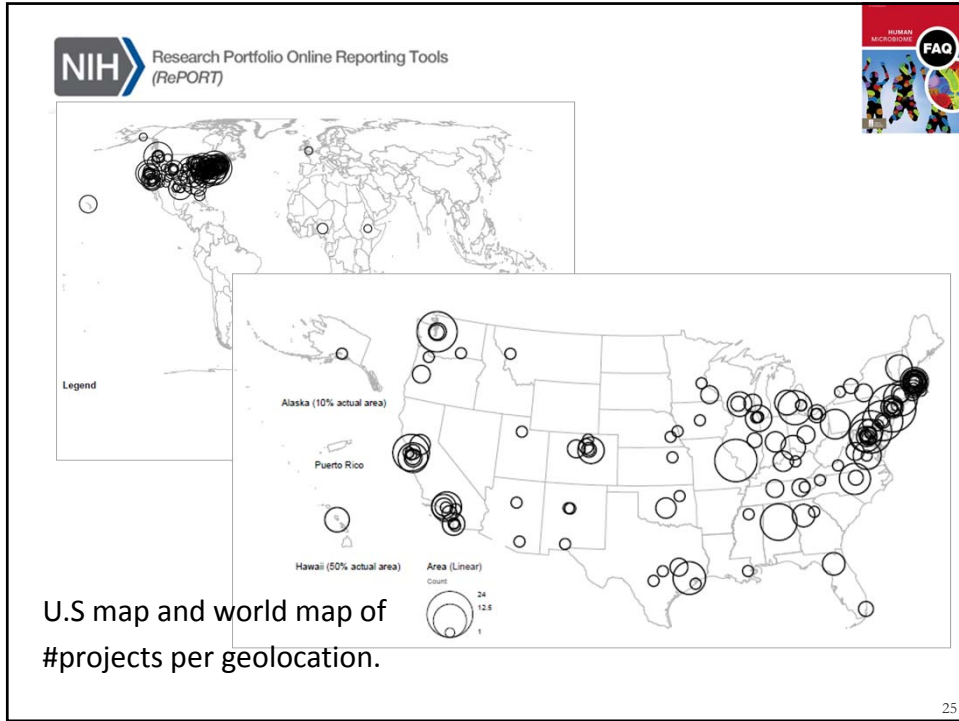
NIH Research Portfolio Online Reporting Tools (RePORT)

Institution	#Awards	Year	#Awards
NEW YORK UNIVERSITY SCHOOL OF MEDICINE	24	2009	1
UNIVERSITY OF MARYLAND BALTIMORE	19	2010	3
WASHINGTON UNIVERSITY	18	2011	7
UNIVERSITY OF PENNSYLVANIA	17	2012	36
UNIVERSITY OF WASHINGTON	17	2013	166
UNIVERSITY OF ALABAMA AT BIRMINGHAM	14	2014	324
UNIVERSITY OF CALIFORNIA, SAN FRANCISCO	14		
UNIVERSITY OF MICHIGAN	12		
BAYLOR COLLEGE OF MEDICINE	11		
J. CRAIG VENTER INSTITUTE, INC.	11		
YALE UNIVERSITY	11		
UNIV OF NORTH CAROLINA CHAPEL HILL	10		
CALIFORNIA INSTITUTE OF TECHNOLOGY	9		
UNIVERSITY OF PITTSBURGH	9		
BROAD INSTITUTE, INC.	8		
STANFORD UNIVERSITY	8		
VIRGINIA COMMONWEALTH UNIVERSITY	8		
DARTMOUTH COLLEGE	7		
UNIVERSITY OF CHICAGO	7		

Country	#Awards
UNITED STATES	503
CANADA	2
NIGERIA	2
ETHIOPIA	1
SOUTH AFRICA	1
UNITED KINGDOM	1

24



European Commission

CORDIS Community Research and Development Information Service

European Commission > CORDIS > Funding Programmes > Find a project

Home News and Events Funding Programmes Projects and Results Top Stories research\*eu magazines Research Partners National and Regional Share

Seventh Framework Programme (FP7) Search all CORDIS Search

About this service | Sitemap

Find a project

Project details are published on CORDIS after the negotiation and the signature of the grant agreement between the European Commission and the beneficiaries. This follows the publication of [calls for proposals](#) and the selection procedure where they are selected by the European Union to be partly financed by the Commission.

Search Projects:

Enter search term(s):

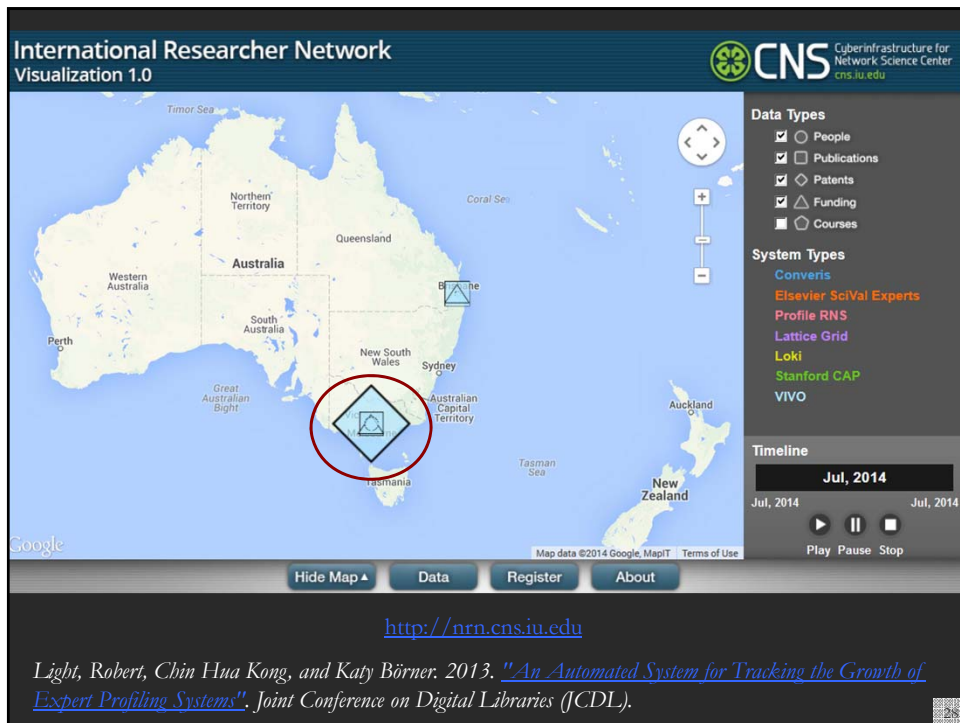
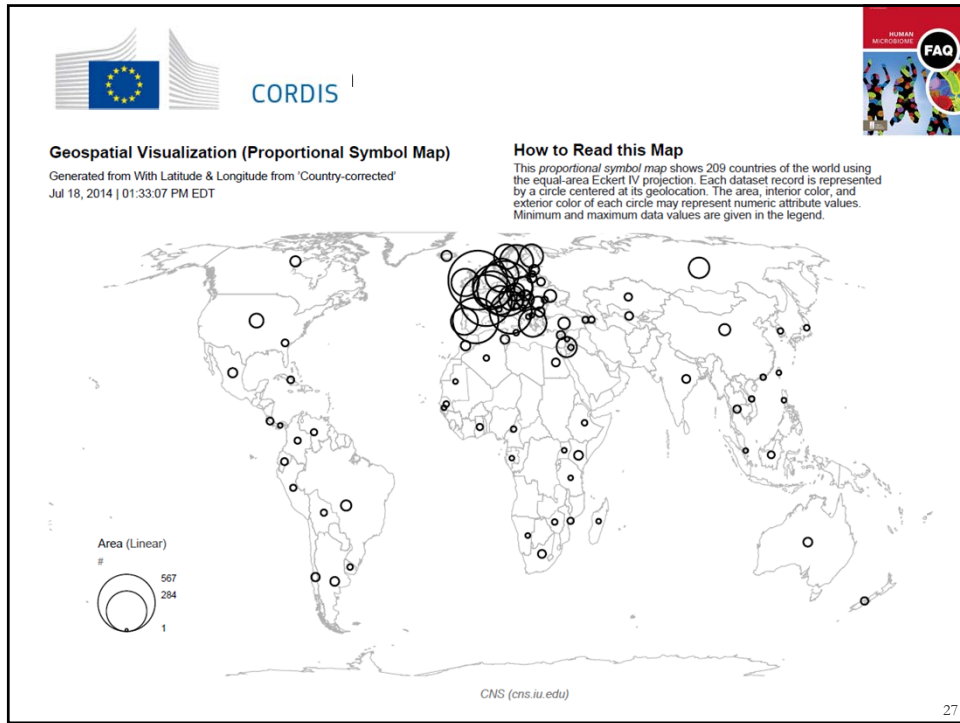
microbiome

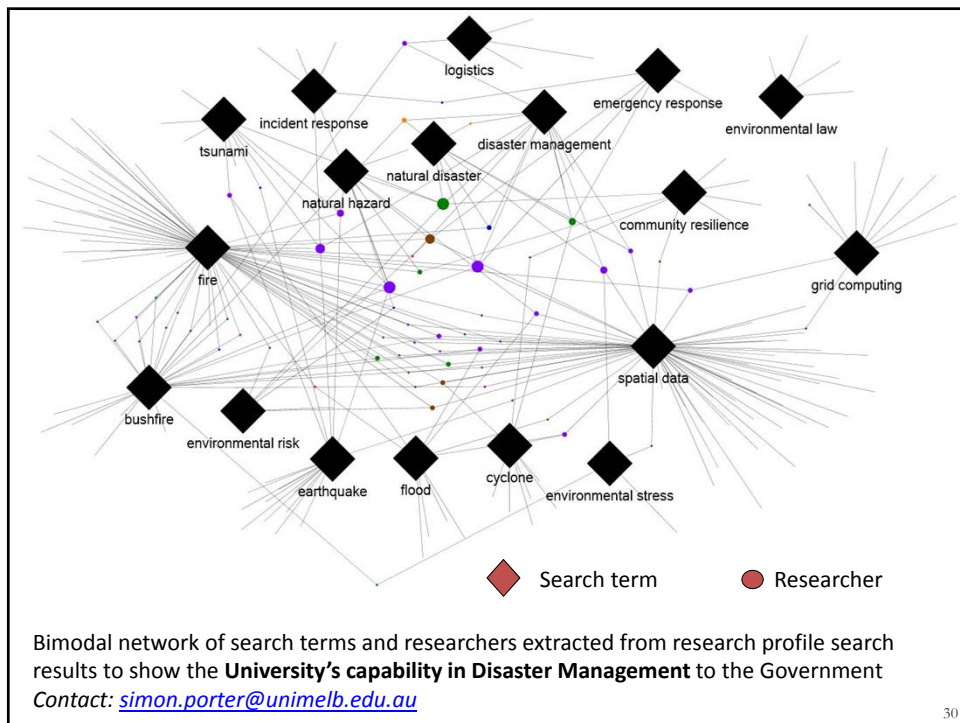
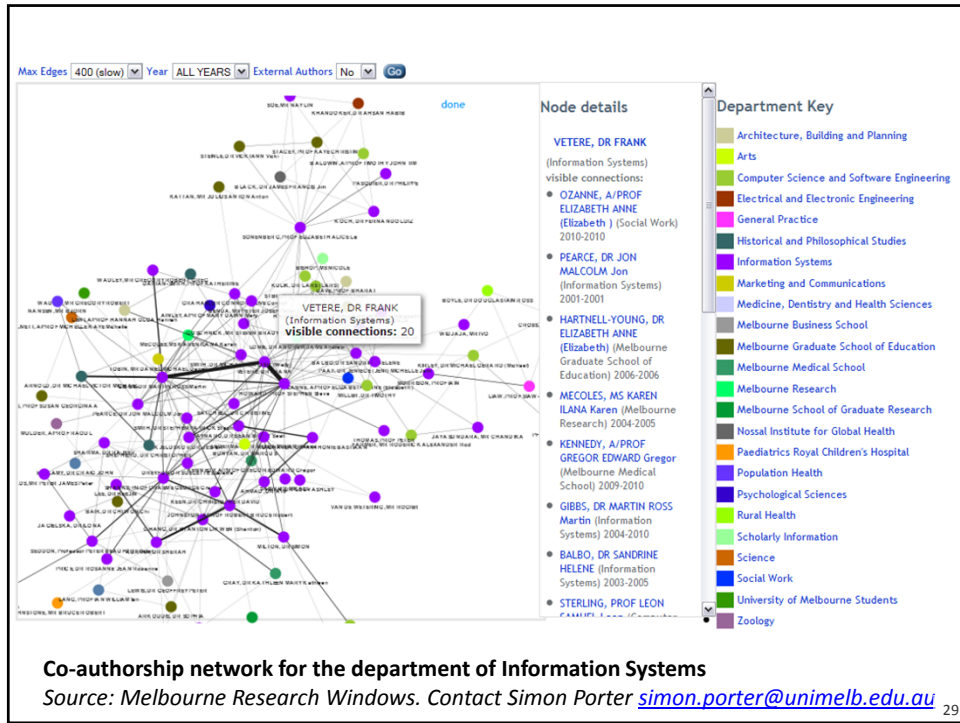
Project Acronym:

\* You can search by individual terms or project acronyms from this page. Other search options are available on the advanced search page

1,406 projects with 4,326 participating countries (96 unique) found

26





**International Researcher Network Visualization 1.0**

CNS Cyberinfrastructure for Network Science Center  
cns.iu.edu

**Data Types**

- People
- Patents
- Funding
- Courses

**System Types**

- Converis
- Elsevier SciVal Experts
- Profile RNS
- Lattice Grid
- Loki
- Stanford CAP
- VIVO

**Timeline**

Jul, 2014

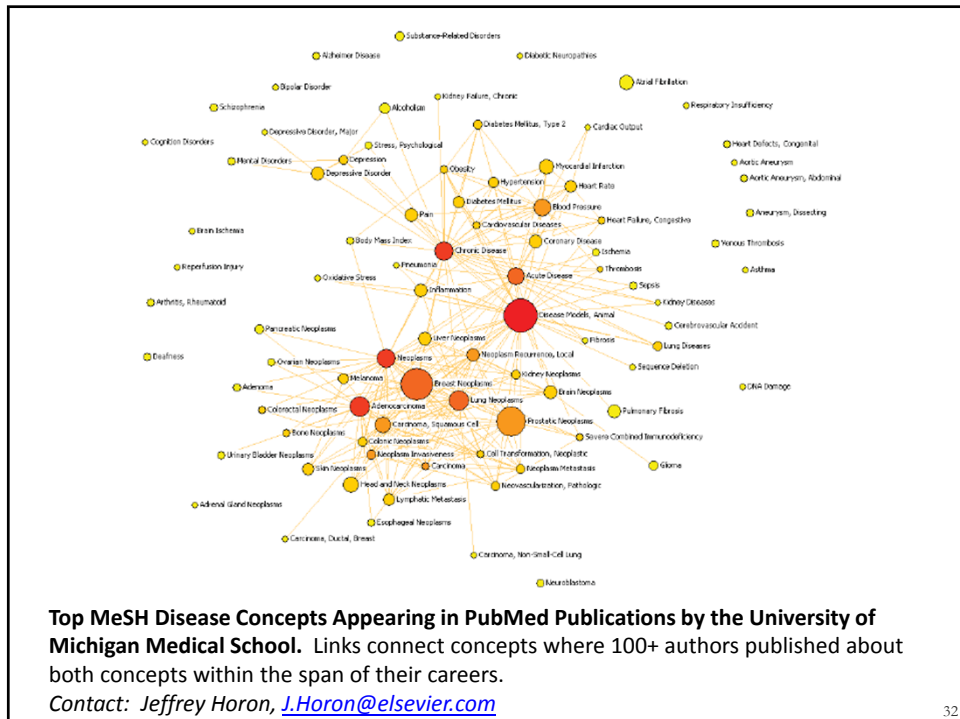
Jul, 2014 Jul, 2014

Play Pause Stop

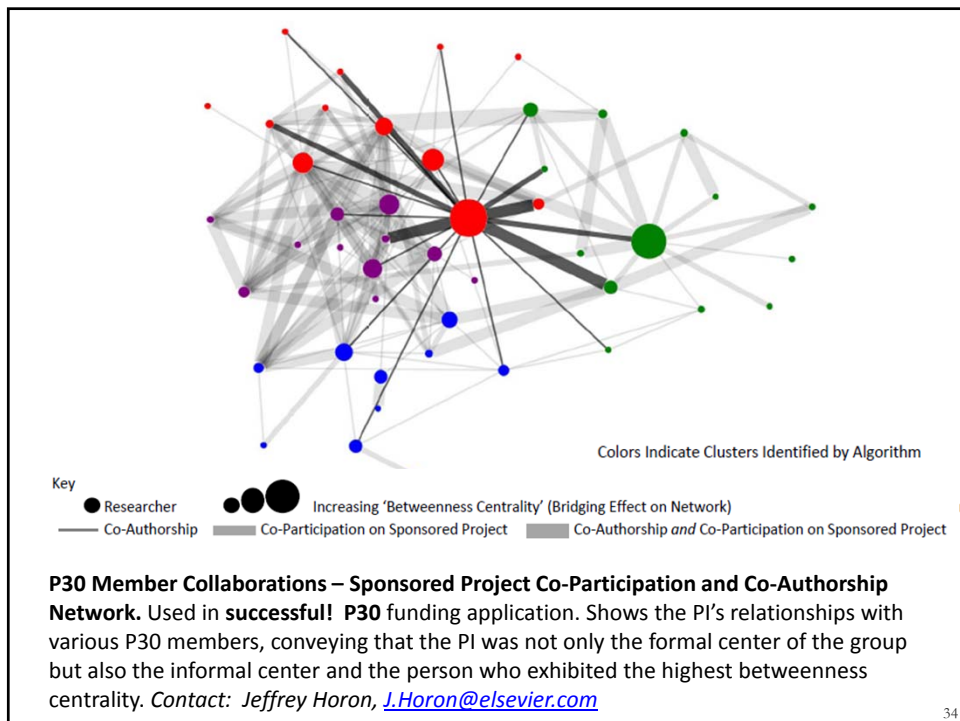
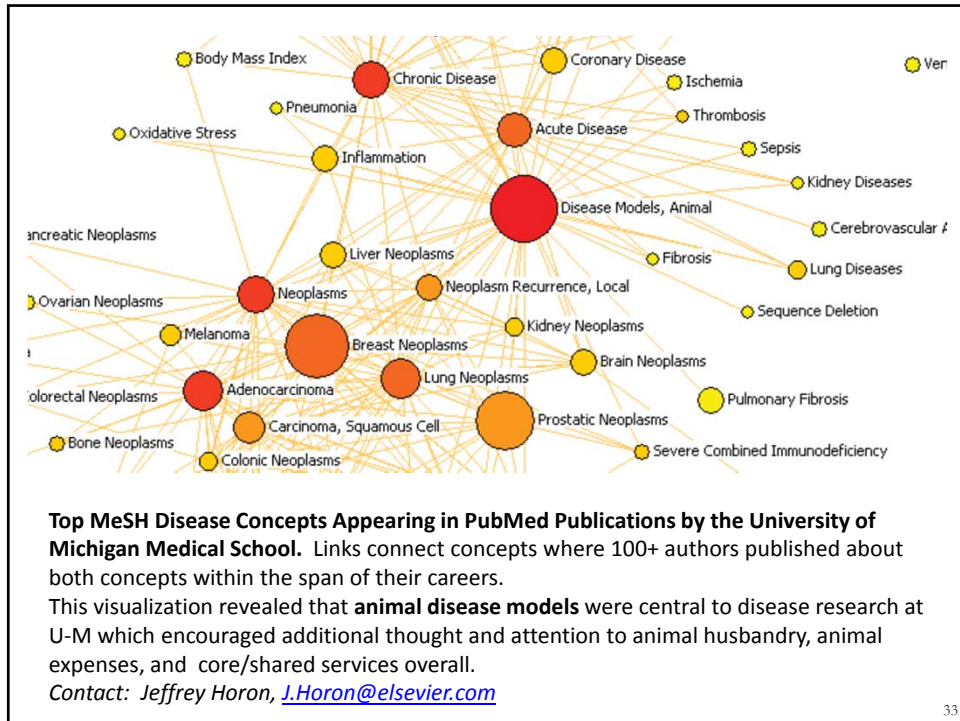
Hide Map Data Register About

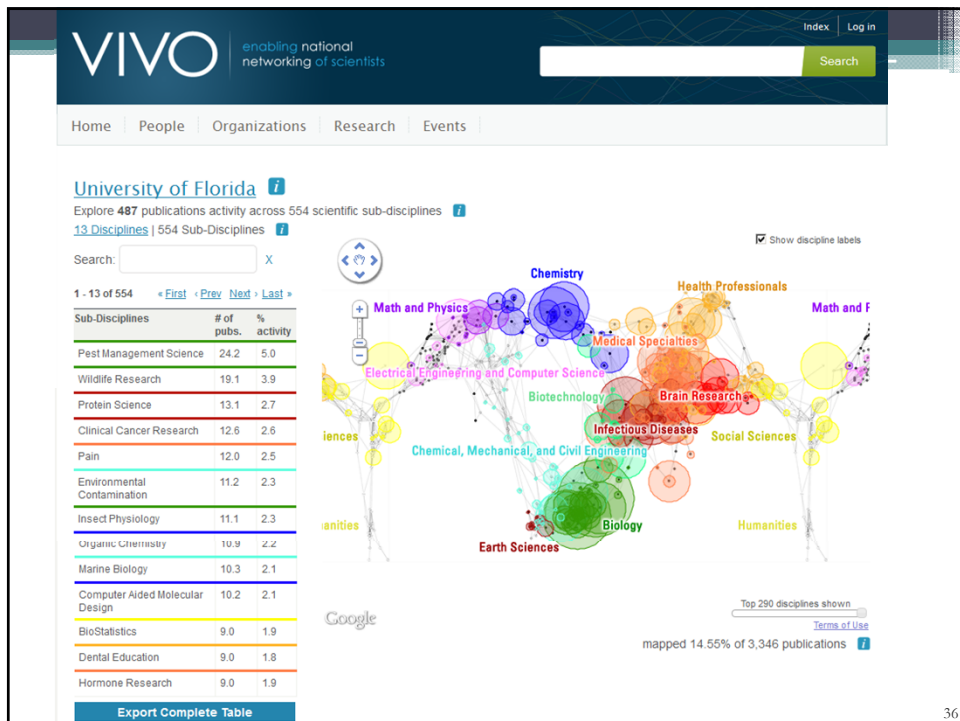
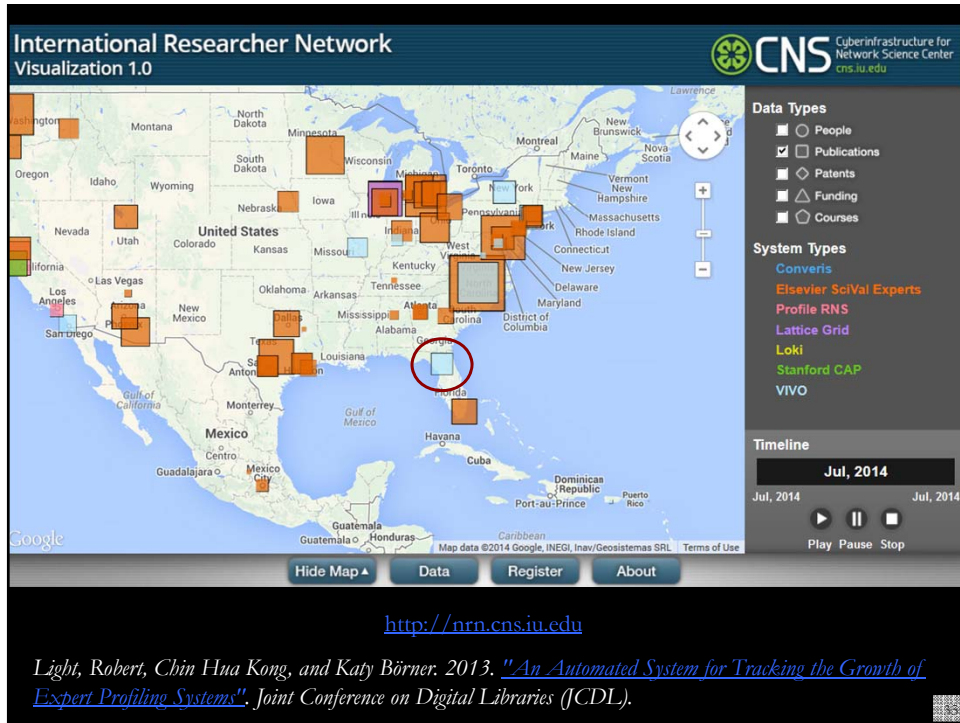
<http://nrn.cns.iu.edu>

*Light, Robert, Chin Hua Kong, and Katy Börner. 2013. "An Automated System for Tracking the Growth of Expert Profiling Systems". Joint Conference on Digital Libraries (JCDL).*









**VIVO** enabling national networking of scientists

Index Log in

Search

Compare organizations

Organizations

Search: [input] X

1 - 10 of 12 [First] [Prev] [Next] [Last]

Organization	# of pubs.
<input checked="" type="checkbox"/> Office of the Senior Vice President for Health Affairs	2940
<input checked="" type="checkbox"/> Office of the Provost and Senior Vice President for Academic Affairs	1419
<input checked="" type="checkbox"/> Institute of Food and Agricultural Sciences	848
<input type="checkbox"/> Office of the Vice President for Research	393
<input type="checkbox"/> Office of the Senior Vice President for Administration & Business Ventures	149
<input type="checkbox"/> Division of Student Affairs	1
<input type="checkbox"/> Office of Development and Alumni Affairs	1
<input type="checkbox"/> General Counsel	0

Math and Physics, Chemistry, Health Professionals, Math a, Medical Specialties, Brain Research, Electrical Engineering and Computer Science, Biotechnology, Infectious Diseases, Social Sciences, Chemical, Mechanical, and Civil Engineering, Earth Sciences, Biology, Humanities

© 2008 The Regents of the University of California and SoTech Strategies. Map updated by SoTech Strategies, OST, and CNS in 2011.

Office of the Senior ...	Office of the Provost ...	Institute of Food and ...
Subdisciplines	Subdisciplines	Subdisciplines
# of pubs.	# of pubs.	# of pubs.
Neuroscience: ...	Organic Chemistry	Pest Management ...
Pain	BioStatistics	Wildlife Research
20.3	19.8	24.3
19.0	11.0	24.1

International Researcher Network Visualization 1.0

CNS Cyberinfrastructure for Network Science Center [cns.iu.edu](http://cns.iu.edu)

Data Types

- People
- Publications
- Patents
- Funding
- Courses

System Types

- Convertis
- Elsevier SciVal Experts
- Harvard Catalyst Profiles
- Stanford CAP
- VIVO

Timeline

Jul, 2014

Jul, 2014 Jul, 2014

Play Pause Stop

Hide Map Data Register About

Please register your institution's researcher networking system at <http://nrm.cns.iu.edu>

## Next: NRN Competition Design

### Let's Learn From TREC

The Text REtrieval Conference (TREC), co-sponsored by the National Institute of Standards and Technology (NIST) and U.S. Department of Defense. TREC has the following goals:

- to encourage research in information retrieval based on large test collections;
- to increase communication among industry, academia, and government by creating an open forum for the exchange of research ideas;
- to speed the transfer of technology from research labs into commercial products by demonstrating substantial improvements in retrieval methodologies on real-world problems; and
- to increase the availability of appropriate evaluation techniques for use by industry and academia, including development of new evaluation techniques more applicable to current systems.

## Let's Learn From TREC

TREC is overseen by a program committee consisting of representatives from government, industry, and academia. For each TREC, NIST provides a test set of documents and questions.

Participants run their own retrieval systems on the data, and return to NIST a list of the retrieved top-ranked documents.

NIST pools the individual results, judges the retrieved documents for correctness, and evaluates the results.

The TREC cycle ends with a workshop that is a forum for participants to share their experiences.

<http://trec.nist.gov>

**Feel free to let me know if you are interested to be involved in designing a TREC-like competition for NRN systems!**

41

All papers, maps, tools, talks, press are linked from <http://cns.iu.edu>  
 These slides will soon be at <http://cns.iu.edu/docs/presentations>  
 CNS Facebook: <http://www.facebook.com/cnscenter>  
 Mapping Science Exhibit Facebook: <http://www.facebook.com/mappingscience>

42