

Plug-and-play visualization with the Science of Science Tool



Ted Polley, Chin Hua Kong, and Dr. Katy Börner

With special thanks to Kevin W. Boyack, Chin Hua Kong, Micah Linnemeier, Russell J. Duhon, Patrick Phillips, Chintan Tank, Thomas Smith, Nianli Ma, Joseph R. Biberstine, David Coe, Scott Weingart, Hanning Guo, Mark A. Price, Angela M. Zoss, Ted Polley, and Sean Lind.

Cyberinfrastructure for Network Science Center
School of Library and Information Science
Indiana University Bloomington
Statewide IT Conference
Indiana Memorial Union, Walnut Room
September 25, 2012 – 9:30am-10:00am



Presentation Overview

- Macroscopes/CIShell
- Introduction to Sci2
 - Sci2 v0.5.2 Alpha
 - Sci2 v1.0 Alpha
- Types and Levels of Analysis Capable with Sci2
- File Formats Supported by Sci2
- Sci2 User Interface
- Sci2 Supported Tools
 - Gnuplot
 - GUESS
 - Cytoscape
 - R
 - Gephi
 - Coming soon... VOSviewer
- Sci2 Visualizations
 - General
 - Temporal
 - Geospatial
 - Networks
 - Topical
- Q&A
- Adjourn

Macroscopes

Decision making in science, industry, and politics, as well as in daily life, requires that we make sense of datasets representing the structure and dynamics of complex systems

Macroscopes provide a vision of the whole, helping us synthesize the related elements and enabling us to detect patterns, trends, and outliers while granting access to myriad details

Rather than making things larger or smaller, **macroscopes let us observe what is too great, slow, or complex for the human eye and mind to notice and comprehend**



Microscopes



Telescopes



Macroscopes

3

Plug-and-Play Macroscopes

While microscopes and telescopes are physical instruments, macroscopes are **continuously changing bundles of software plugins**

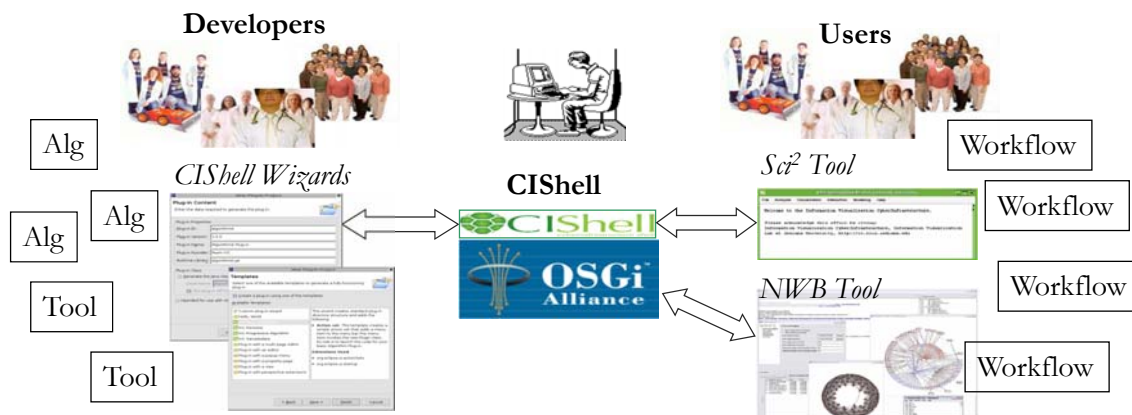
Macroscopes make it easy to

- Select and combine not only domain-specific algorithms and bridges to existing tools but also to meet the cross-cutting infrastructural requirements needed for a scientifically rigorous cyberinfrastructure
- Put together plugins to create customized tools and share plugins via email, flash drives, or online
 - Simply drop plugins into the tool they appear in the menu, ready to use
 - Sharing algorithm components, tools, or novel interfaces becomes as easy as sharing images on Flickr or videos on YouTube

4

OSGi & Cyberinfrastructure Shell (CIShell)

- CIShell (<http://cishell.org>) is an open source software specification for the integration and utilization of datasets, algorithms, and tools
- It extends the Open Services Gateway Initiative (OSGi) (<http://osgi.org>), a standardized, modularized service platform
- CIShell provides “sockets” into which algorithms, tools, and datasets can be plugged using a wizard-driven process



5



Science of Science (Sci²) Tool

<http://sci2.cns.iu.edu>

- Explicitly designed for SoS research and practice, well documented, easy to use.
- Empowers many to run common studies while making it easy for experts to perform novel research.
- Advanced algorithms, effective visualizations, and many (standard) workflows.
- Supports micro-level documentation and replication of studies.
- Is open source—anybody can review and extend the code, or use it for commercial purposes.

nature

OPINION

SUMMARY

- Existing metrics have known flaws
- A reliable, open, joined-up data infrastructure is needed
- Data should be collected on the full range of scientists' work
- Social scientists and economists should be involved

Vol 464|25 March 2010

Let's make science metrics more scientific

To capture the essence of good science, stakeholders must combine forces to create an open, sound and consistent system for measuring all the activities that make up academic productivity, says **Julia Lane**.

6



Sci2 Tool v0.5.2 Alpha (Dec 19, 2011)

New Features

- Support new Web of Science format from ISI
- Support network overlay for geographical map
- Support Prefuse's visualizations on Macs OS

Improvements

- Improve memory usage and processing time of Extract top N nodes and Extract top N Edges algorithms
- Unify merging algorithms used by database

Bug fixes

- Fix legend boundary issue in geographical map
- Fix typo error on the output data label
- Fix slice by year algorithm

7



Sci2 Tool v1.0 Alpha (June 13, 2012)

Major Release

featuring a Web services compatible CShell v2.0 (<http://cishell.org>)

New Features

- Google Scholar citation reader
- New visualizations such as
 - geospatial maps
 - science maps
 - bi-modal network layout
- R statistical tool bridging
- Gephi visualization tool bridging
- Comprehensive online documentation

Release Note Details

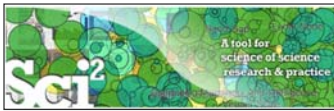
<http://wiki.cns.iu.edu/display/SCI2TUTORIAL/4.4+Sci2+Release+Notes+v1.0+alpha>

8



Type of Analysis vs. Level of Analysis

	Micro/Individual (1-100 records)	Meso/Local (101-10,000 records)	Macro/Global (10,000 < records)
Statistical Analysis/Profiling	Individual person and their expertise profiles	Larger labs, centers, universities, research domains, or states	All of NSF, all of science
Temporal Analysis (When)	Funding portfolio of one individual	Topic bursts of PNAS	113 Years of PNAS Research
Geospatial Analysis (Where)	Career trajectory of one individual	Wrapping a network of intellectual k	PNAS
Topical Analysis (What)		Research	VxOrd/Topic m NIH funding
Network Analysis (With Whom?)	NSF Co-PI network of one indiv	Network	NIH's core competency

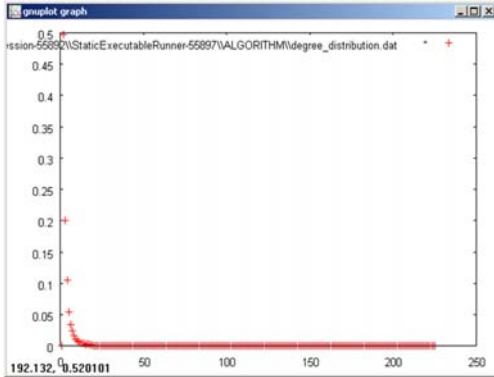


Type of Analysis vs. Level of Analysis

	Micro/Individual (1-100 records)	Meso/Local (101-10,000 records)	Macro/Global (10,000 < records)
Statistical Analysis/Profiling	Individual person and their expertise profiles	Larger labs, centers, universities, research domains, or states	All of NSF, all of USA, all of science.
Temporal Analysis (When)	Funding portfolio of one individual	Mapping in 20-year	Physics
Geospatial Analysis (Where)	Career trajectory individual		
Topical Analysis (What)			Ord/ H funding
Network Analysis (With Whom?)	NSF Co-PI network of one indiv	-auth	H's core competency

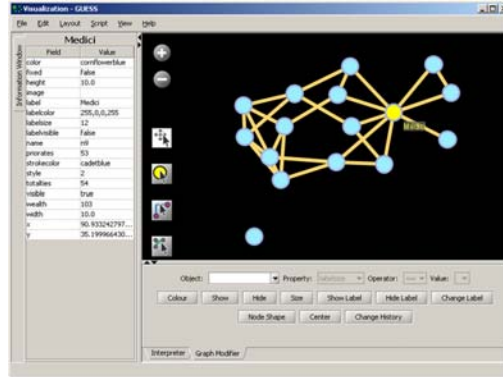


Sci2 Tool – Supported Tools



Gnuplot

portable command-line driven
 interactive data and function plotting
 utility <http://www.gnuplot.info/>.



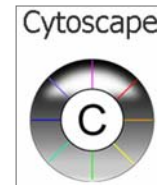
GUESS

exploratory data analysis and visualization
 tool for graphs and networks.

<https://nwb.slis.indiana.edu/community/?n=VisualizeData.GUESS>.



Sci2 Tool – Supported Tools

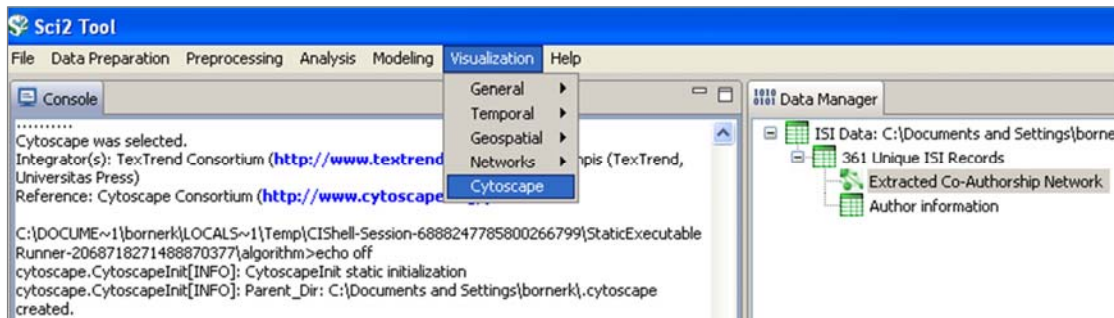


Adding more layout algorithms and network visualization interactivity
 via Cytoscape <http://www.cytoscape.org>.

Simply add *org.textrend.visualization.cytoscape_0.0.3.jar* into your /plugin directory.

Restart Sci² Tool

Cytoscape now shows in the Visualization Menu

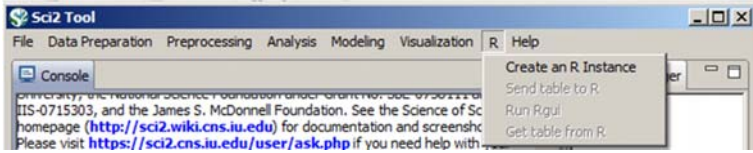


Select a network in Data Manager, run Cytoscape and the tool will start with this network loaded.

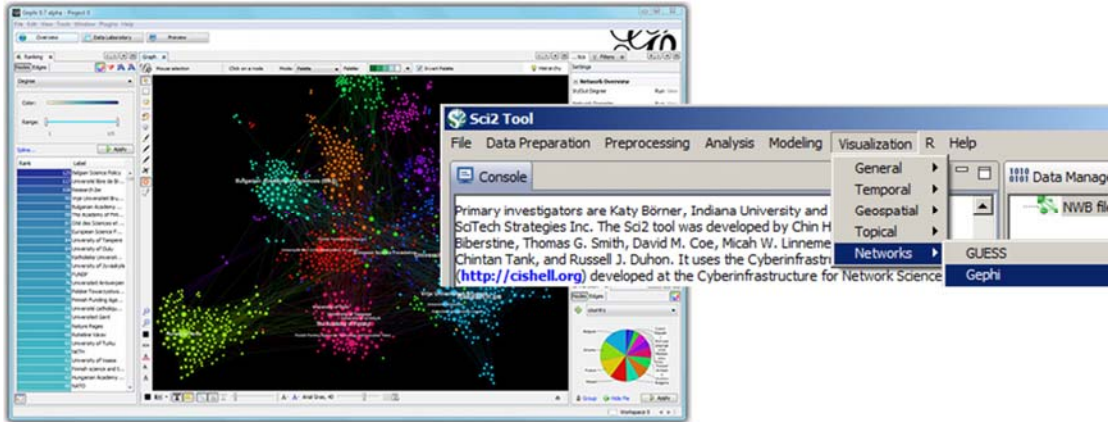


Sci2 Tool – Bridged Tools

R statistical tool bridging

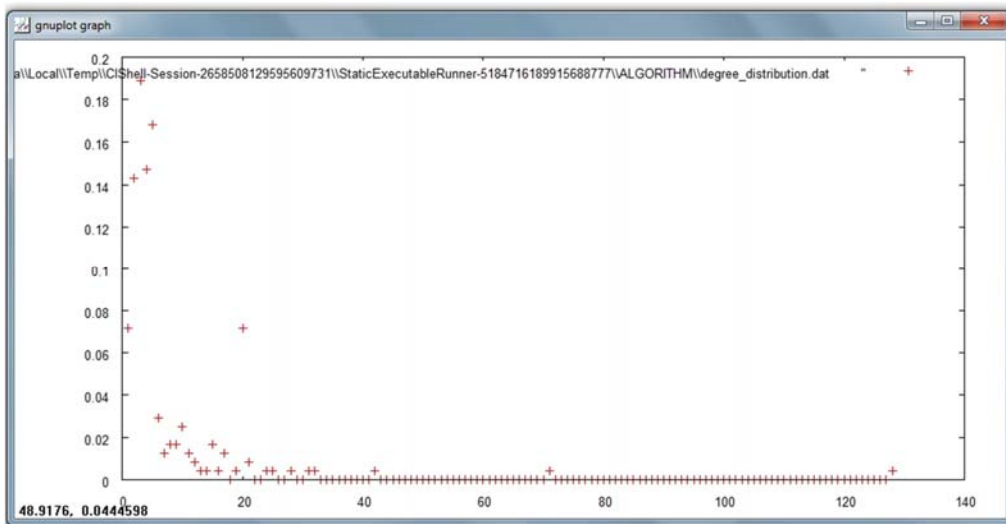


Gephi visualization tool bridging



Sci2 Tool Visualizations: *General*

Use GnuPlot to visualize the degree distribution of a co-authorship network extracted from ISI data...



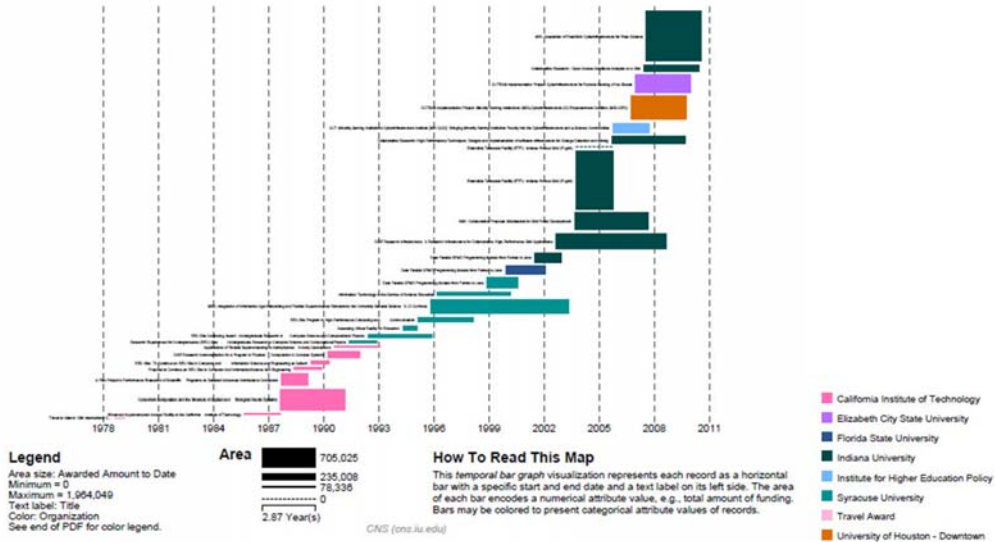


Sci2 Tool Visualizations: *Temporal*

Use Temporal Bar Graph to visualize NSF funding profiles over time...

Temporal Visualization

Generated from NSF csv file: C:\Users\dapoley\Desktop\sci2-N-1.0.0.201206150117NGT-win32_x86\so2sampledata\scientometrics\sf\GeoffreyFox.nsf
June 15, 2012 | 10:16 AM EDT



17

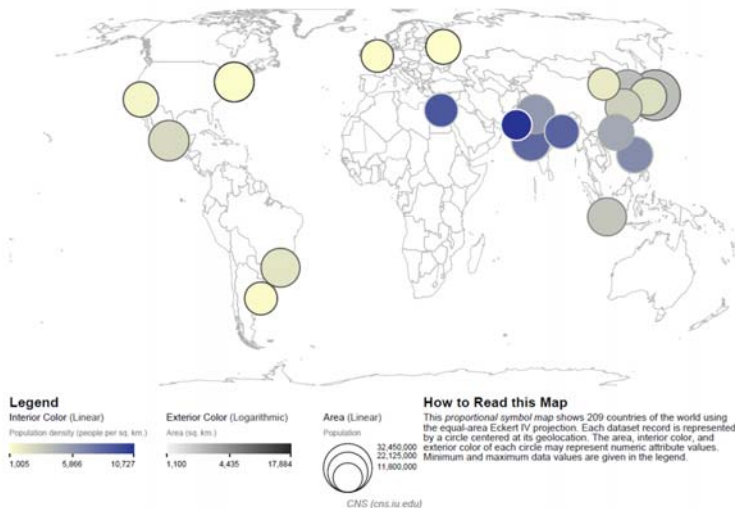


Sci2 Tool Visualizations: *Geospatial*

Use the Proportional Symbol Map to size and color symbols proportionally to numeric data, in this case the 20 most populated cities around the world...

Geospatial Visualization (Proportional Symbol Map)

Generated from 20 most populous cities
May 02, 2012 | 06:13:38 PM EDT



18

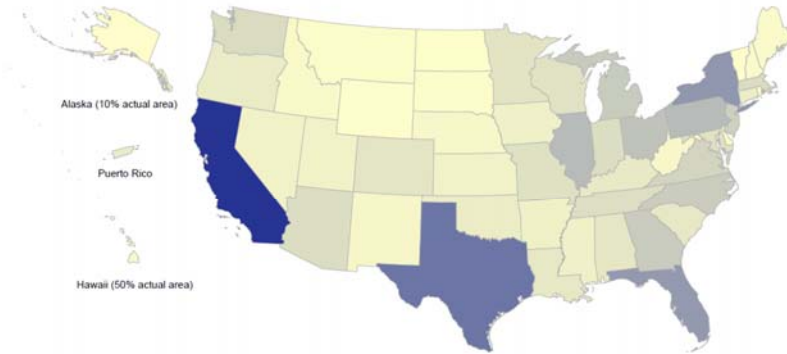


Sci² Tool Visualizations: *Geospatial*

Use the Choropleth Map to color regions proportionally to numeric data, in this case the US by state population...

Geospatial Visualization (Choropleth Map)

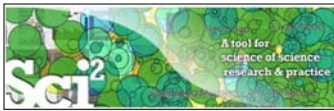
Generated from U.S. state populations
May 02, 2012 | 06:13:42 PM EDT



Legend
U.S. State Color (Linear)
Population
568,158 19,130,035 37,691,912

How to Read this Map
This choropleth map shows 52 U.S. states and other jurisdictions using the Albers equal-area conic projection with Alaska, Puerto Rico, and Hawaii inset. Each U.S. state may be color coded in proportion to a numerical value. Minimum and maximum data values are given in the legend.

CNS (cns.iu.edu)



Sci² Tool Visualizations: *Geospatial*

Overlay a geospatial network on a base map, in this case Albert-László Barabási and his collaborators...



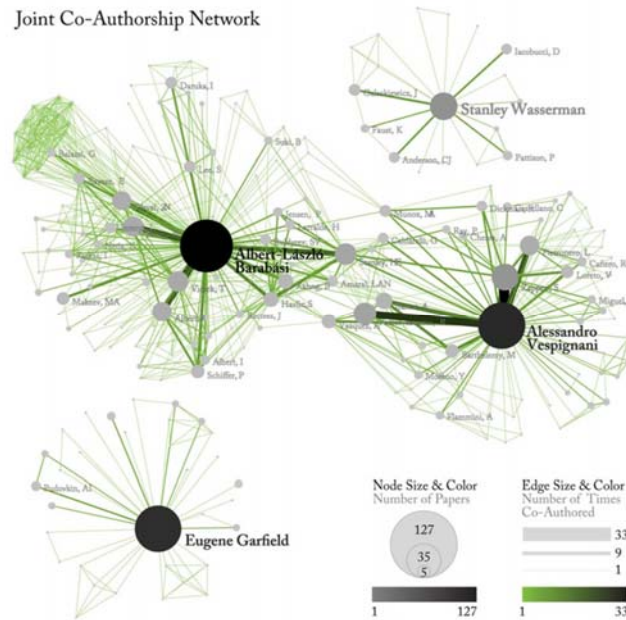
Geo Map ()
Eckert IV Projection
Apr 19, 2012 | 11:14:48 AM

Created with Sci² Tool | (c)Barabási-Laczi Network Science Center <http://www.cns.iu.edu>



Sci2 Tool Visualizations: *Networks*

Use GUESS to visualize networks, such as this co-authorship network extracted from ISI data...

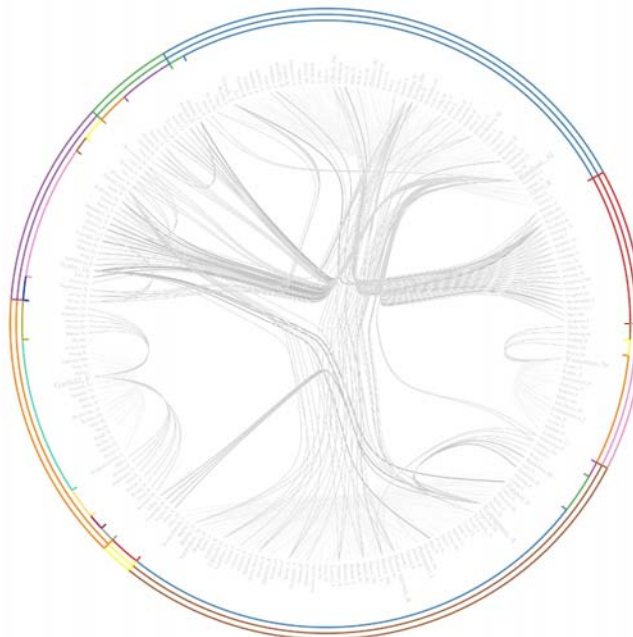


21



Sci2 Tool Visualizations: *Networks*

Use Circular Hierarchy to visualize networks with community attributes appended...

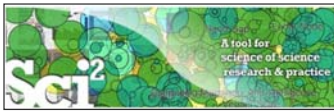
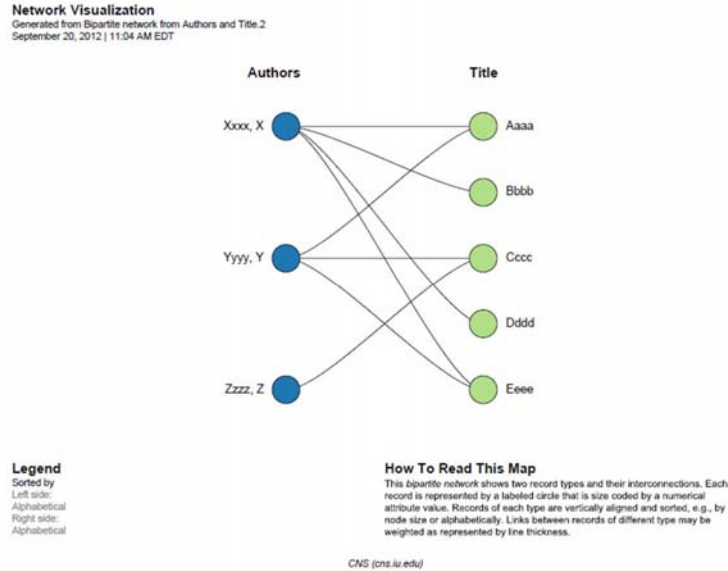


22



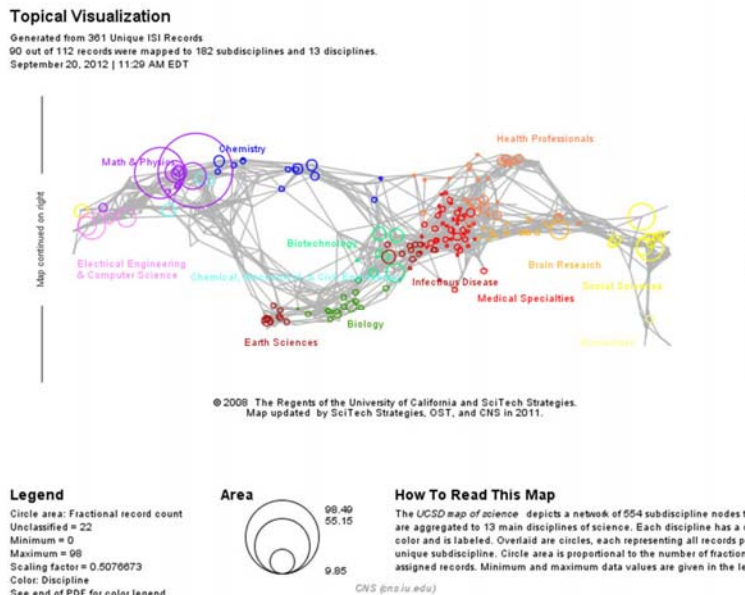
Sci2 Tool Visualizations: *Networks*

Use the Bipartite Network visualization to create a network of authors and publication titles...



Sci2 Tool Visualizations: *Topical*

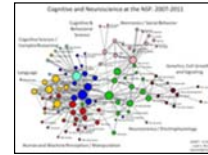
Use the Map of Science via Journals visualization a network drawn the result of mapping a dataset's journals to the underlying subdiscipline(s) those journals contain...





Sci2 Tool Usage at National Science Foundation

Topic co-occurrence network of the 2885 cognitive and neuroscience NSF projects funded between 2007 and 2011. Statistical text mining (Topic model) was used to identify topics from NSF awards and proposals from 2000-2011.

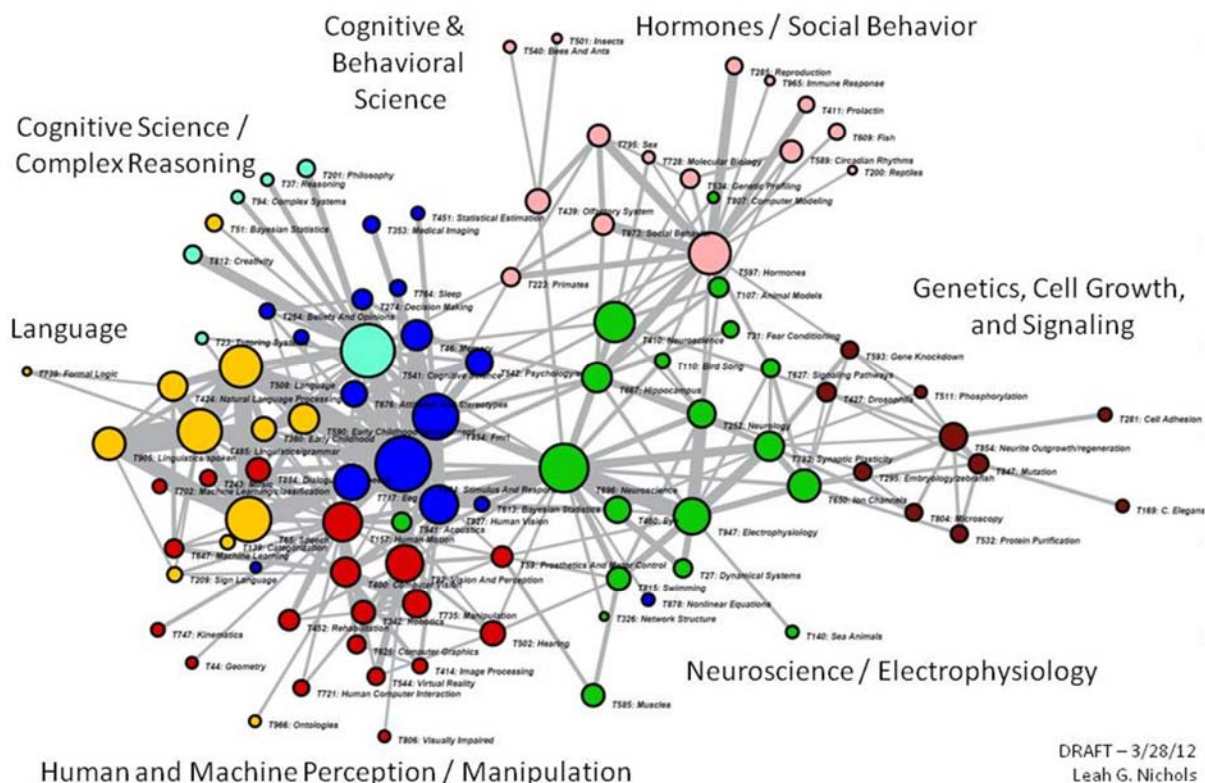


Each award is tagged with up to 4 topics. Lines represent the co-occurrence of the connected topics within an award(s). The nodes are scaled by number of awards (max = 355) and the lines are scaled on number of co-occurrences (max =91). The node colors differentiate the nodes via the level-0 Blondel communities.

This is ... an **entirely new way of characterizing and understanding the NSF portfolio**. This is in part because this enables **analysis of the content of the awards/proposals independent of the institutional structure**. One can quickly identify ALL of the Cog/Neuro awards throughout the entire NSF portfolio – so it captures research in all of the unexpected institutional places. This method also allows one to **easily identify areas of parallel or potentially collaborative research being funded by different institutional structures** and ... to identify potential areas for advancing science by facilitating collaborations.

Leah G. Nichols, NSF

Cognitive and Neuroscience at the NSF: 2007-2011

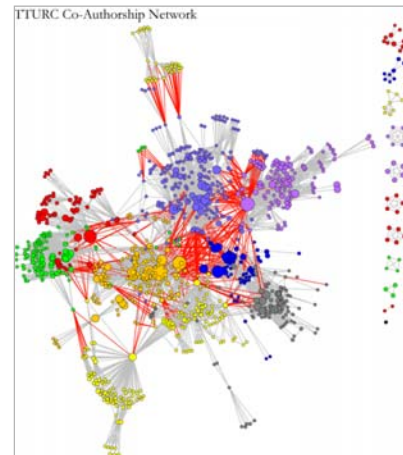
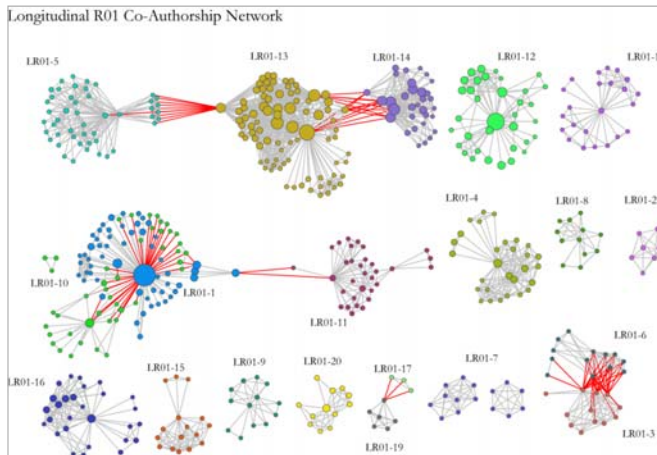
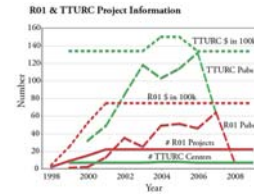




Sci2 Tool Usage at National Institutes of Health

Mapping Transdisciplinary Tobacco Use Research

Centers Publications: Compare R01 investigator based funding with TTURC Center awards in terms of number of publications and evolving co-author networks. *Zoss & Börner, forthcoming.*
Supported by NIH/NCI Contract HHSN261200800812



27



Sci² Tool Usage at National Institutes of Health

Sci2 Tool now supports Web services and serves as a visual interface to publicly available NIH RePORT Expenditure and Results (RePORTER)/ RePORTER data provided by NIH.

NETE^{AV} ANALYZER | VISUALIZER

TEMPORAL ANALYSIS GEOSPATIAL ANALYSIS TOPICAL ANALYSIS NETWORK ANALYSIS

WHERE IS GEOSPATIAL ANALYSIS

“When” questions are commonly addressed via temporal analyses
 “Where” questions often involve the application of geospatial methods
 “What” questions require topical analyses
 “With whom” questions are often answered via network studies

W H E N
 W H E R E
 W H A T
 W H O M

28



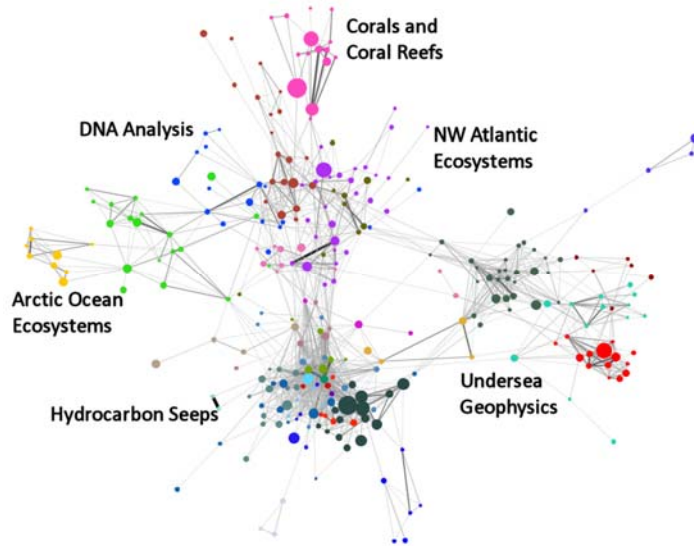
Sci² Tool Usage at the National Oceanic and Atmospheric Administration (NOAA)

Co-author network generated from publications supported by NOAA's Office of Ocean Exploration and Research (OER). Nodes are sized based on the number of publications produced and colored to highlight clustering. Edges are sized and colored based on the number of collaborations between authors.

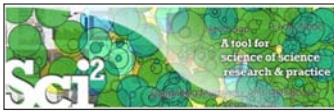
For details, see "Visualizing Networks of Scientific Research"

by Chris Belter

<http://www.infotoday.com/online/may12/Belter-Visualizing-Networks-of-Scientific-Research.shtml>



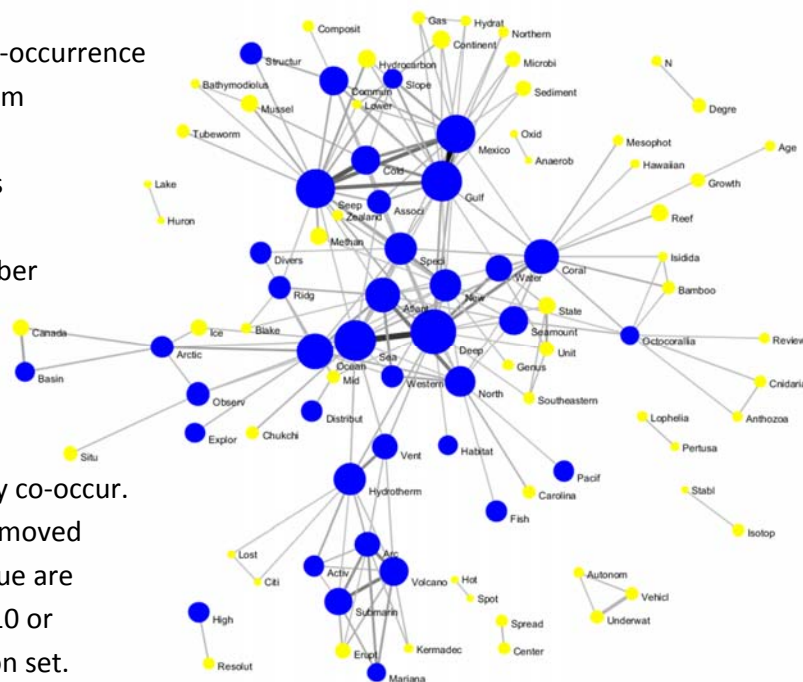
29



Sci² Tool Usage at the National Oceanic and Atmospheric Administration (NOAA)

Central section of a word co-occurrence network of words drawn from the titles of OER-supported journal articles. Some words have been truncated.

Nodes are sized by the number of times the word is used and edges are sized and colored based on the number of publications in which they co-occur. Weaker edges have been removed for clarity. Nodes colored blue are those that have been used 10 or more times in the publication set.

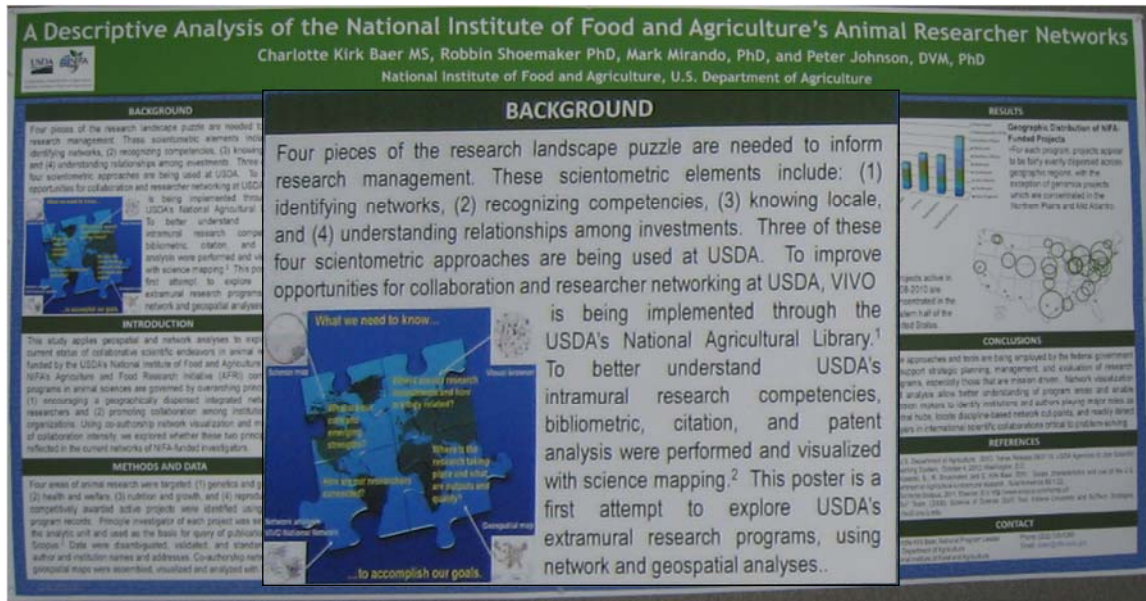


30



Sci2 Tool Usage at US Department of Agriculture (USDA)

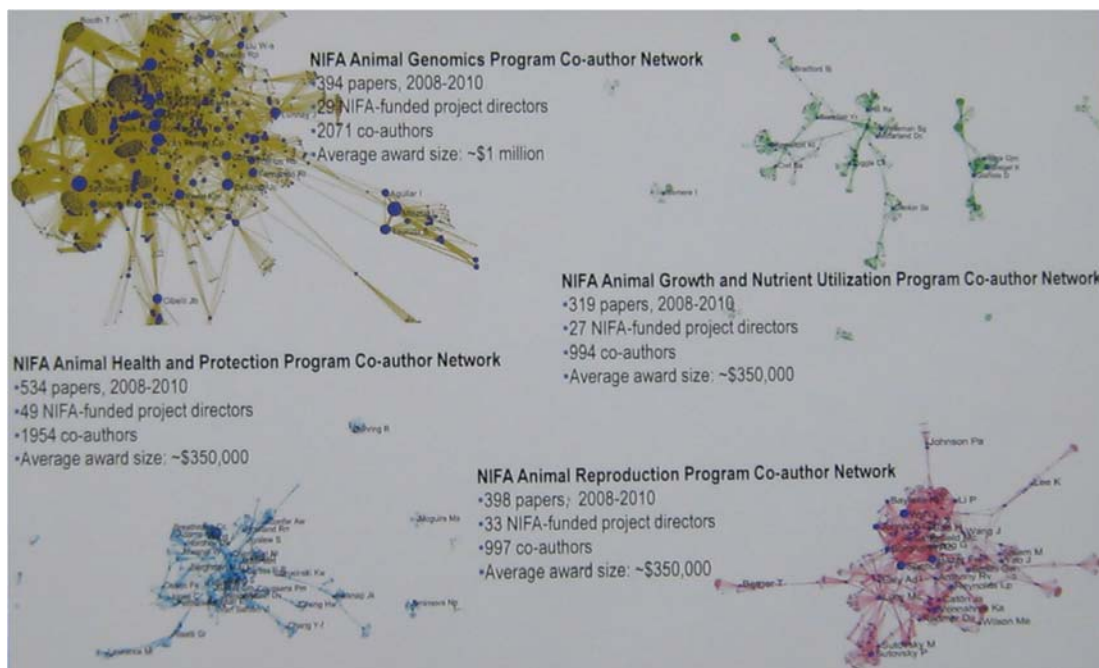
First time portrait of intramural research conducted by the U.S. Department of Agriculture (USDA) presented at the VIVO Conference 2012.



31



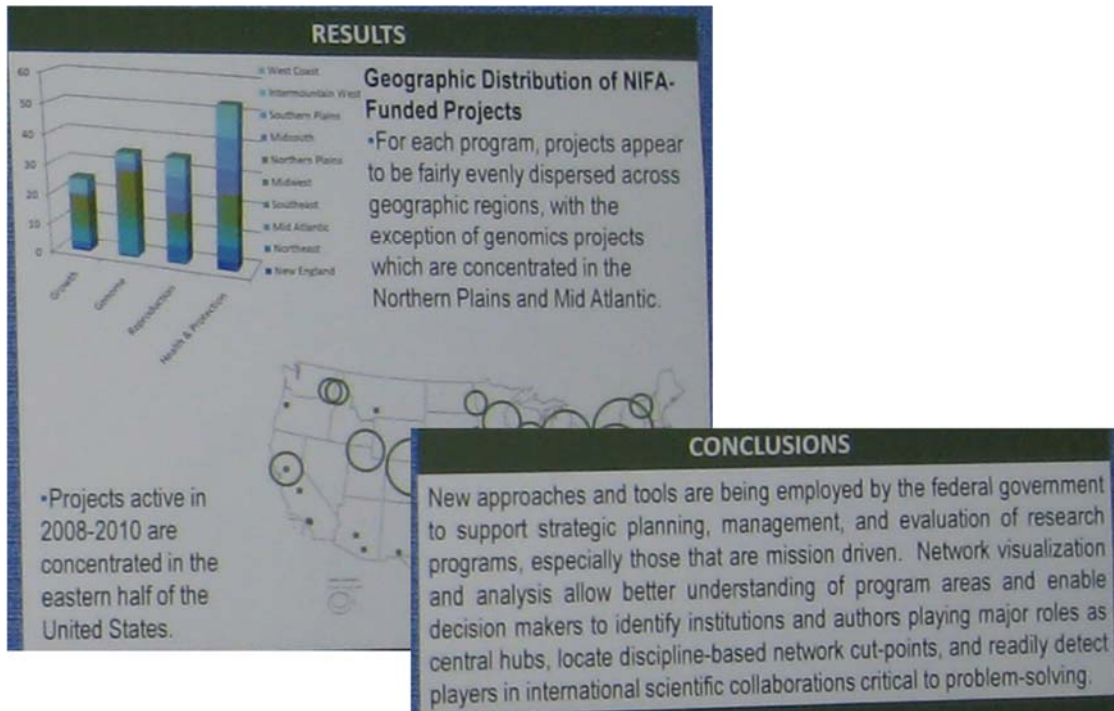
Sci2 Tool Usage at US Department of Agriculture (USDA)



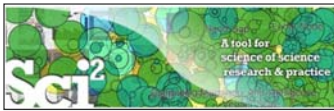
32



Sci² Tool Usage at US Department of Agriculture



33



Sci² Tool Usage at James S. McDonnell Foundation

How did cognitive neuroscience of attention emerge from neurobiology and psychology, 1980–2005? Author co-citation analysis and Pfnets is used to **trace prospectively the development of the field from its precursor disciplines**: cognitive psychology, single cell neurophysiology, neuropsychology, and evoked potential research.

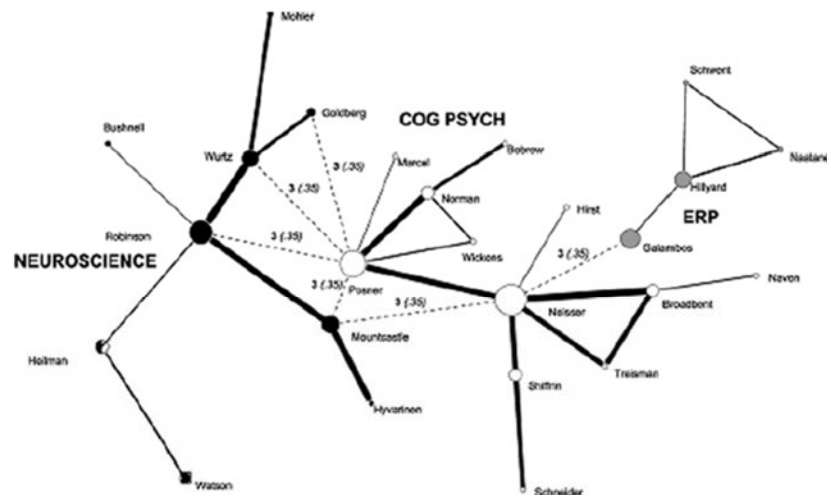


Fig. 1 In the 1980 net, neuroscience (black nodes and black–white nodes) and cognitive psychology (white nodes) develop as clusters with high internal co-citation rates. ERP (grey nodes) develops later in net construction. These clusters are connected by secondary edges at very low levels of co-citation

34



Sci2 Tool Usage at James S. McDonnell Foundation

By 1990 a distinct cognitive neuroscience specialty cluster emerges, dominated by authors engaged in brain imaging research.

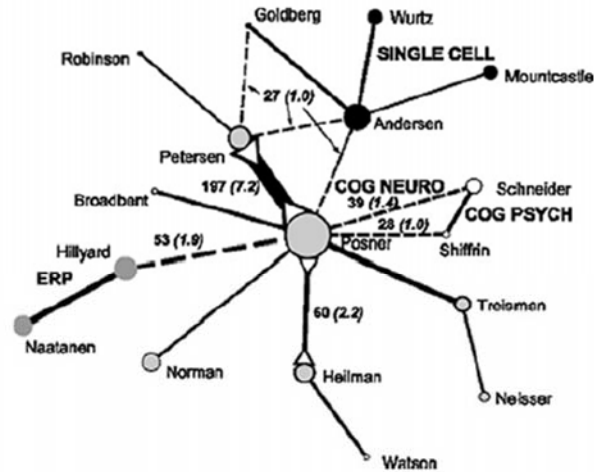


Fig. 5 The strongest link in the 1995 net is a primary edge linking Posner and Petersen. ERP and single cell neurophysiology are linked to cognitive neuroscience cluster by secondary edges

Bruer, John T. (2010). Can we talk? How the cognitive neuroscience of attention emerged from neurobiology and psychology, 1980.2005. *Scientometrics*, 83(3), 751-764. <http://ivl.cns.iu.edu/km/tools/2010-bruer-scientometrics.pdf>



Q & A



Download a copy of Sci2 by visiting <http://sci2.cns.iu.edu>
Read the documentation available at <http://wiki.cns.iu.edu/display/SCI2TUTORIAL>

All papers, maps, tools, talks, press are linked from <http://cns.iu.edu>
CNS Facebook: <http://www.facebook.com/cnscenter>
Mapping Science Exhibit Facebook: <http://www.facebook.com/mappingscience>

If you have questions feel free to email me [dapolley\[at\]indiana\[dot\]edu](mailto:dapolley[at]indiana[dot]edu)

Related Talks



Monday

3:30pm	Online Interactive Map: Say goodbye to tabular representation Chin Hua Kong and Katy Börner	The Research Superhighway	Oak room	Monday 3:30 - 4pm
5pm	Places & Spaces: Mapping Science Katy Börner, Michael Stamper, and Samantha Hale	The Human Element	Oak room	Monday 5 - 5:30pm

Tuesday

9:30am	Plug-and-play visualization with the Science of Science Tool David Polley, Chin Hua Kong, and Katy Börner	The Research Superhighway	Walnut room	Tuesday 9:30 - 10am
11:30am	VIVO@IU: An overview Robert Light, Chin Hua Kong, and Katy Börner	The Research Superhighway	Oak room	Tuesday 11:30 - 12pm

37

We are Hiring!

Senior Software Engineer/Research Analyst (3IT) IU Job #6839

As Senior Software Engineer, you will perform research and programming for current and future externally funded research projects at the CNS Center. These projects include tools powered by the Cyberinfrastructure Shell (CIShell, <http://cishell.org>), an open-source software platform that supports the interchange of datasets and algorithms; MapIN, a map of Indiana's expertise and resources; and other online interactive maps and web sites. You will participate in the entire software development process, from the collection of user stories through planning, implementation, testing, deployment, and documentation. You will also be expected to participate in the training new developers, and the creation of educational material for workshops. As Senior Software Engineer, you will have a chance to help set the standards of our team in many areas, including code, teamwork, product direction, and process.

Software Developer (2IT) IU Job #6862

As a Software Developer, you will work in a team of four to perform research and programming for current and future externally funded research projects at the CNS Center. The main focus will be on tools powered by the Cyberinfrastructure Shell (CIShell, <http://cishell.org>). CIShell is an open-source software platform, built on Java and OSGi that allows developers and scientists to easily exchange datasets and algorithms, and bundle them into custom tools that serve the particular needs of research communities. You will participate in the entire software development process, from the collection of user stories through planning, implementation, testing, deployment, and documentation.