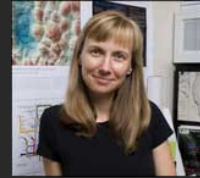


Representing, Analyzing, and Visualizing Scholarly Data in Support of Research Management



Dr. Katy Börner
Cyberinfrastructure for Network Science Center, Director
Information Visualization Laboratory, Director
School of Library and Information Science
Indiana University, Bloomington, IN
katy@indiana.edu

First Author: Thomas Neiryck



*IV Conferences, Zurich, Schweiz
July 5th 2007*



Knowledge Management Tool for

- The tracking, management, and sense making of data relevant for the daily operation of a **medium size** scholarly unit such as a research groups, laboratory, or center.

Note:

- **Small** research groups with about five students might not require the proposed tool as all data can be easily managed by one person.
- **Huge** groups, e.g., entire departments or schools, with more than 50 different people typically have full-time paid assistants and staff to take care of finances, hiring and firing, information technology, travel arrangements, etc..



Target User Groups

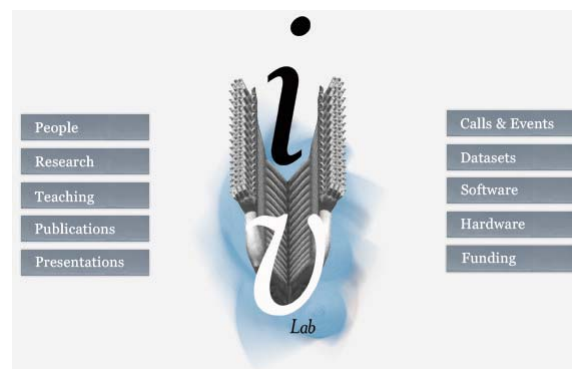
- **Leaders** that need to provide references for current or previous members; report the progress of different projects to different funding agencies in different time intervals, e.g., quarterly or annually.
- **Group members** might include Ph.D. students that need to report their progress on an annual basis, some members are project team leads themselves and are in need to manage the project team and associated publication plans, presentation travels, organized events, as well as the datasets, software, and hardware.
- **Information technology support staff** needs to know what projects and people are affected if certain hardware is replaced or a piece of software is updated.
- **Funding agencies** are interested to see the impact of the work they fund.
- **Scholars** might like to gain a quick overview about the expertise and productivity of a certain unit. They might be interested to know when Ph.D. students become available for hire, if a unit member is available to give a talk at a certain date or is already committed to other travels, etc.

Katy Börner, Representing, Analyzing, and Visualizing Scholarly Data in Support of Research Management

3



Lab/Center Management System



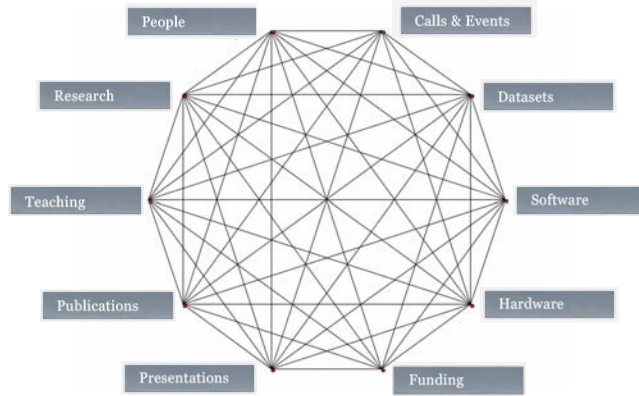
<http://ivl.slis.indiana.edu>

Katy Börner, Representing, Analyzing, and Visualizing Scholarly Data in Support of Research Management

4



Data Entities and Interlinkages

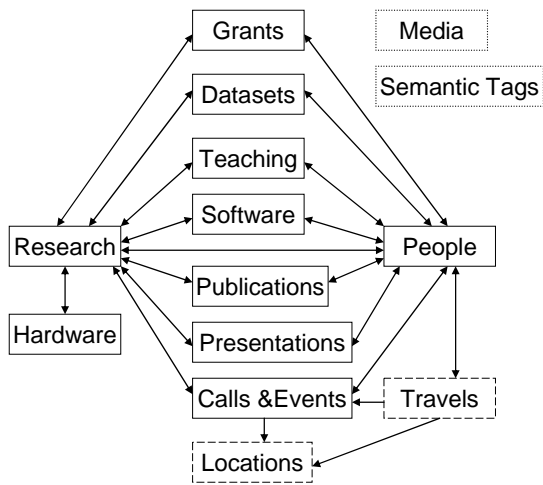


Katy Börner, *Representing, Analyzing, and Visualizing Scholarly Data in Support of Research Management*

5



Simplified representation of the IVL database schema



Katy Börner, *Representing, Analyzing, and Visualizing Scholarly Data in Support of Research Management*

6



Data Entry

Tutorials - Back

Title

Link

People
Aigner, Wolfgang
Aliman, Ian
Althoff, K.D.
Ambre, Sumeet
Anderson, Christina
Andersson, Per-Olov
Andrienko, Gennady
Ansari, Summaya

Start Date

End Date

Location

Venue

Time (e.g., 1-2PM)

Lab member Dates

Start Date (mm-dd-yyyy)	End Date (mm-dd-yyyy)	
01 01 1995		+
4/1/2004	Present	-

Image

Homepage

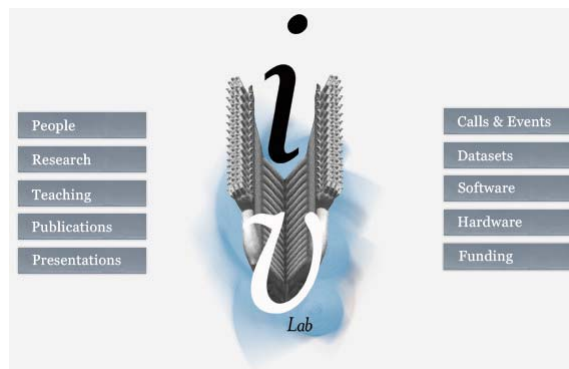
Work Log

Katy Börner, Representing, Analyzing, and Visualizing Scholarly Data in Support of Research Management

7



Demo

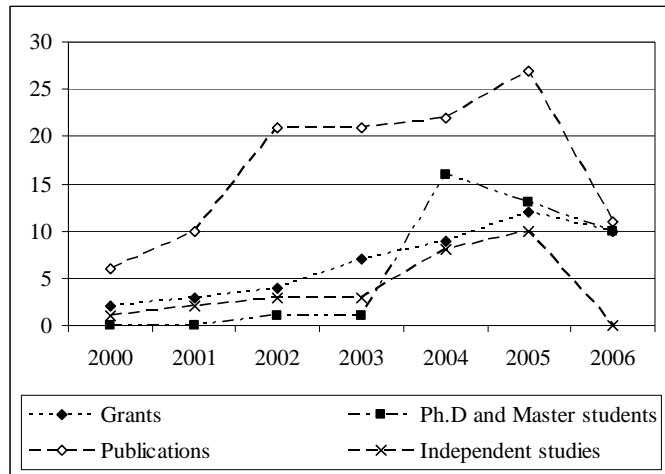


Katy Börner, Representing, Analyzing, and Visualizing Scholarly Data in Support of Research Management

8



Time series analysis & visualization

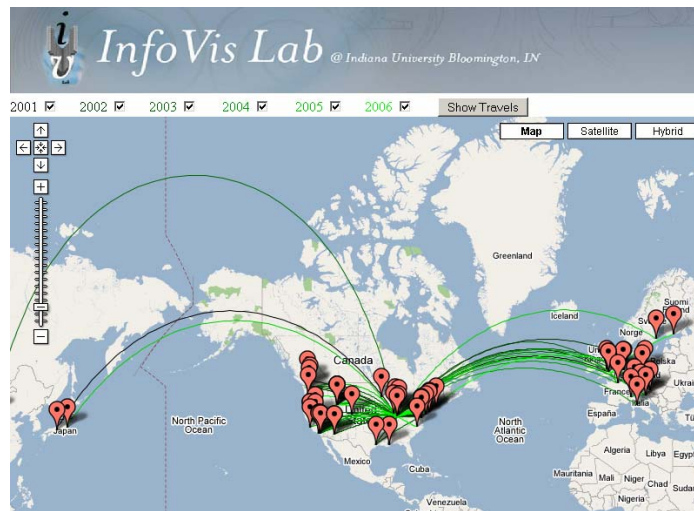


Katy Börner, Representing, Analyzing, and Visualizing Scholarly Data in Support of Research Management

9

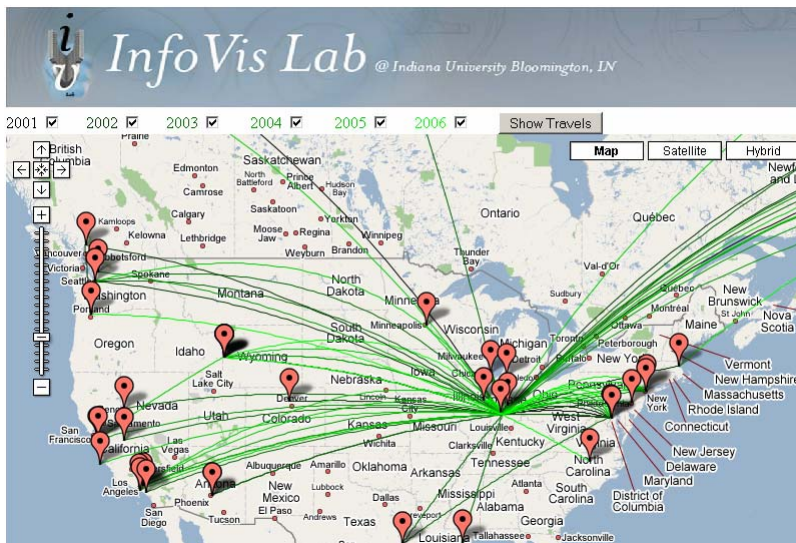
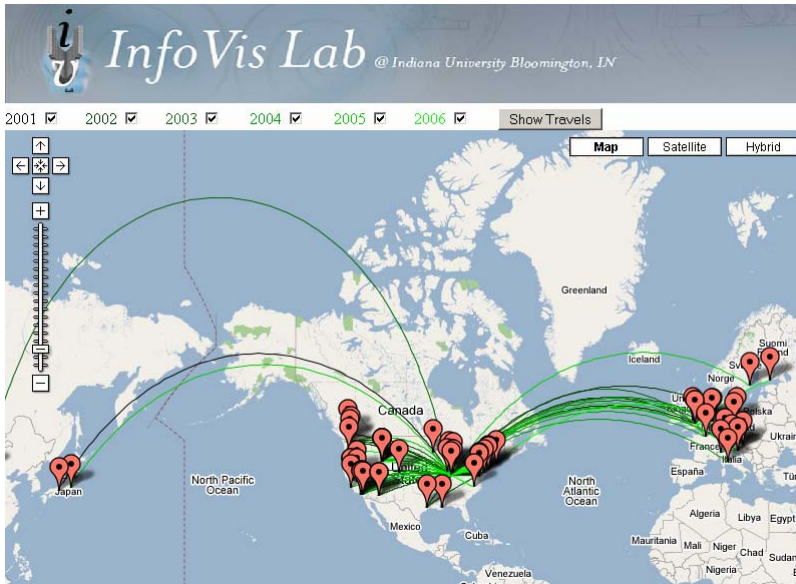


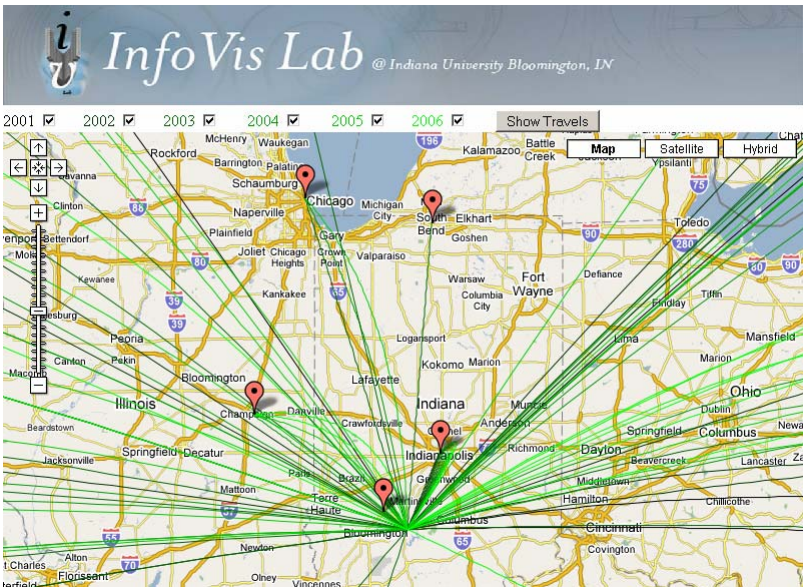
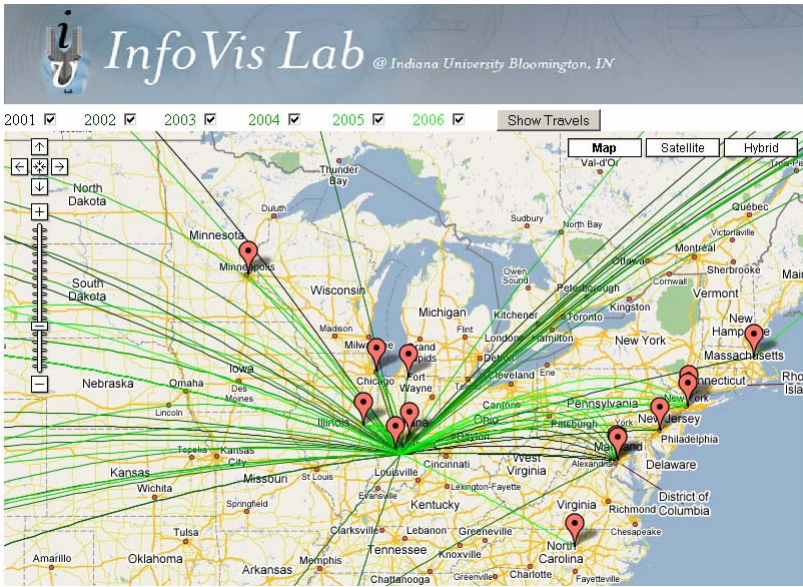
KM: Katy's Travels in 2000-2006

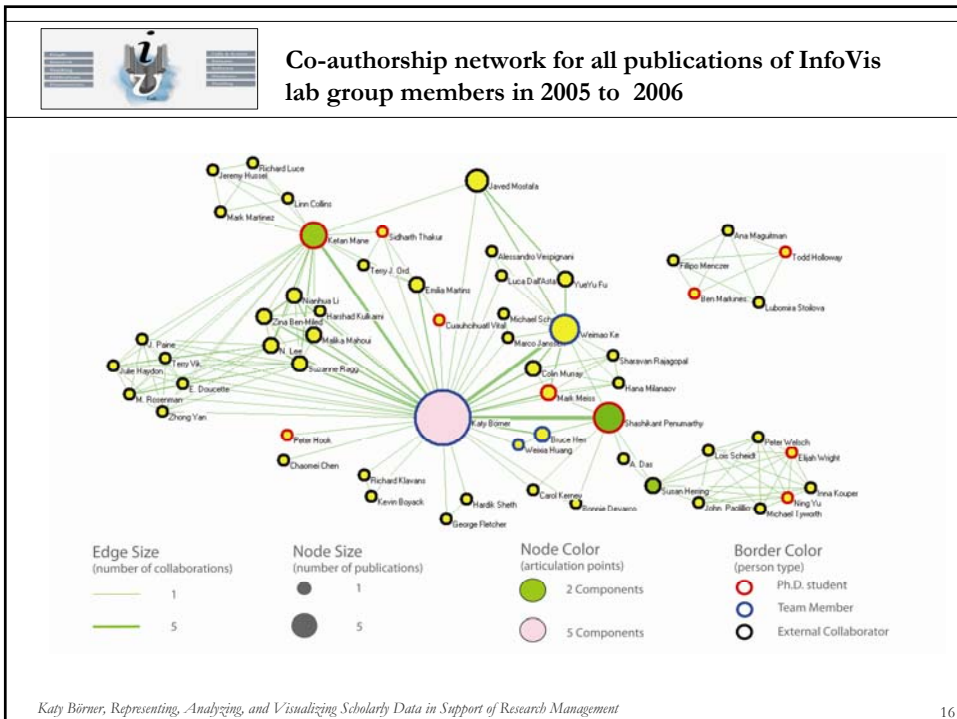
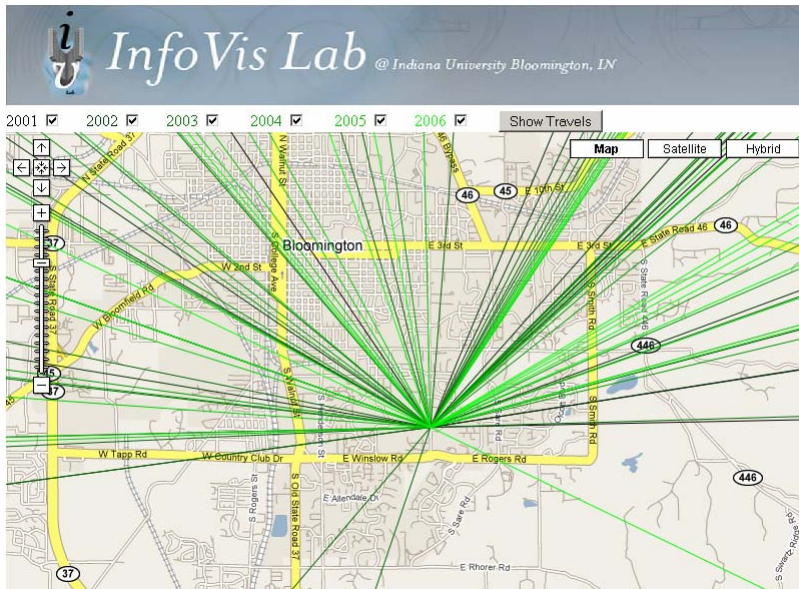


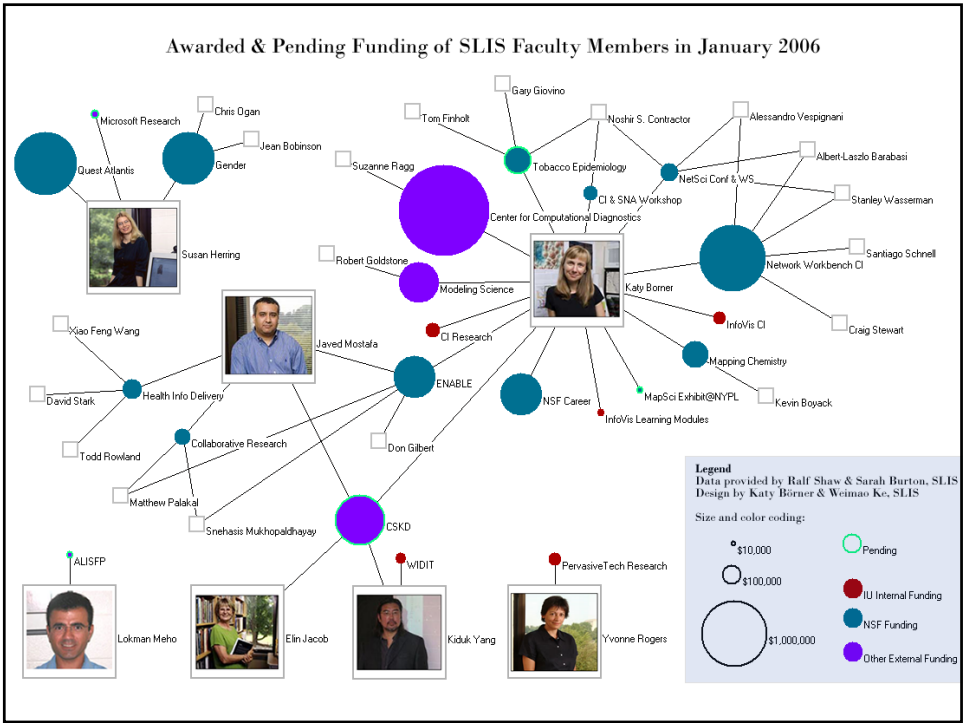
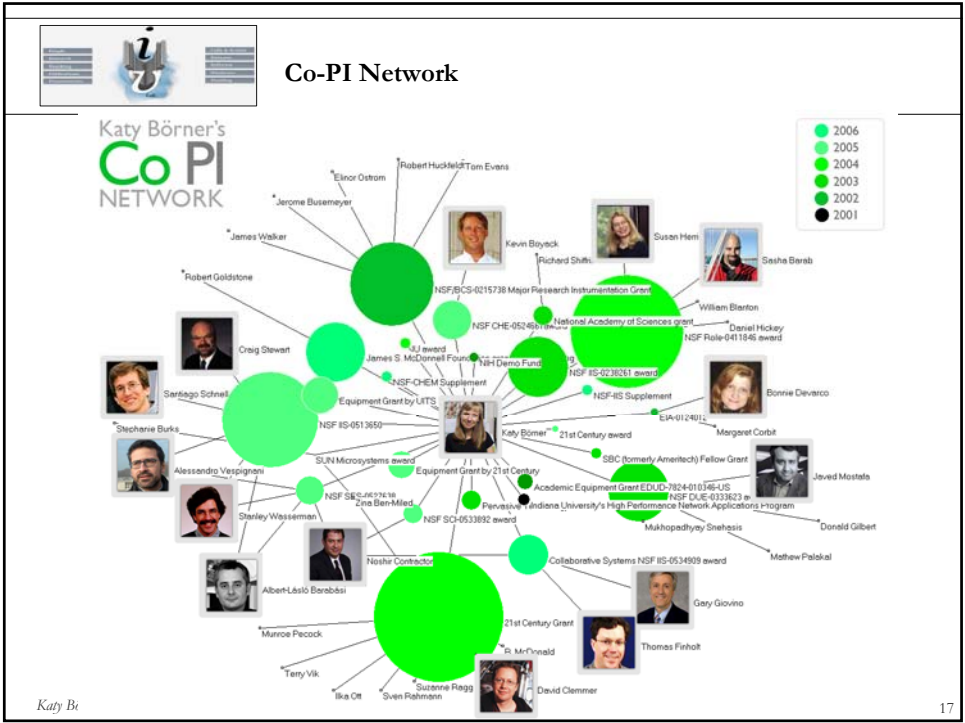
Katy Börner, Representing, Analyzing, and Visualizing Scholarly Data in Support of Research Management

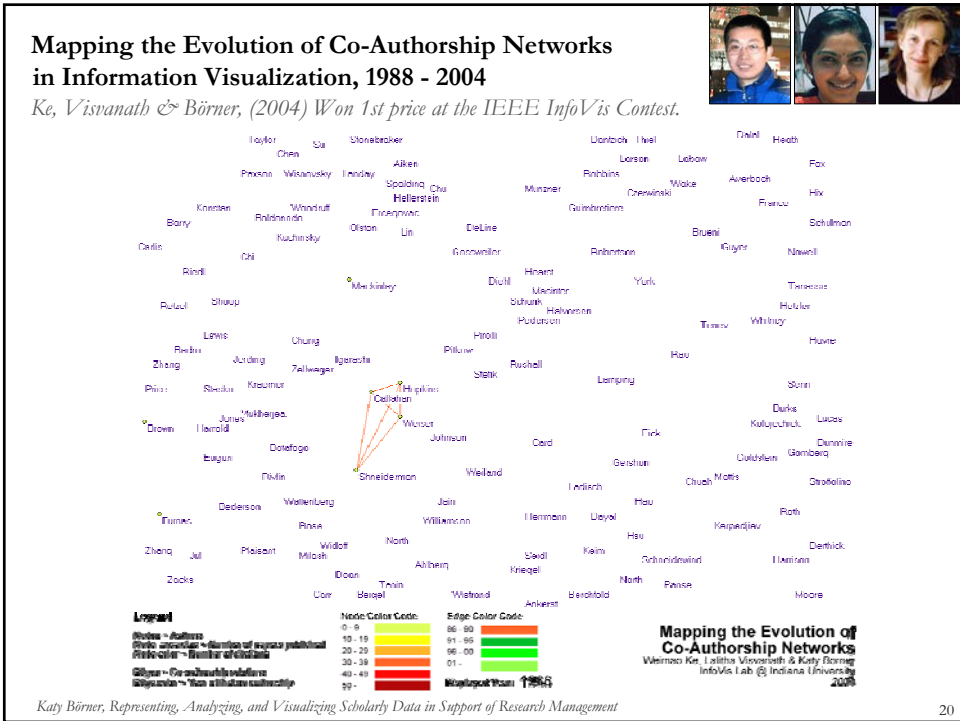
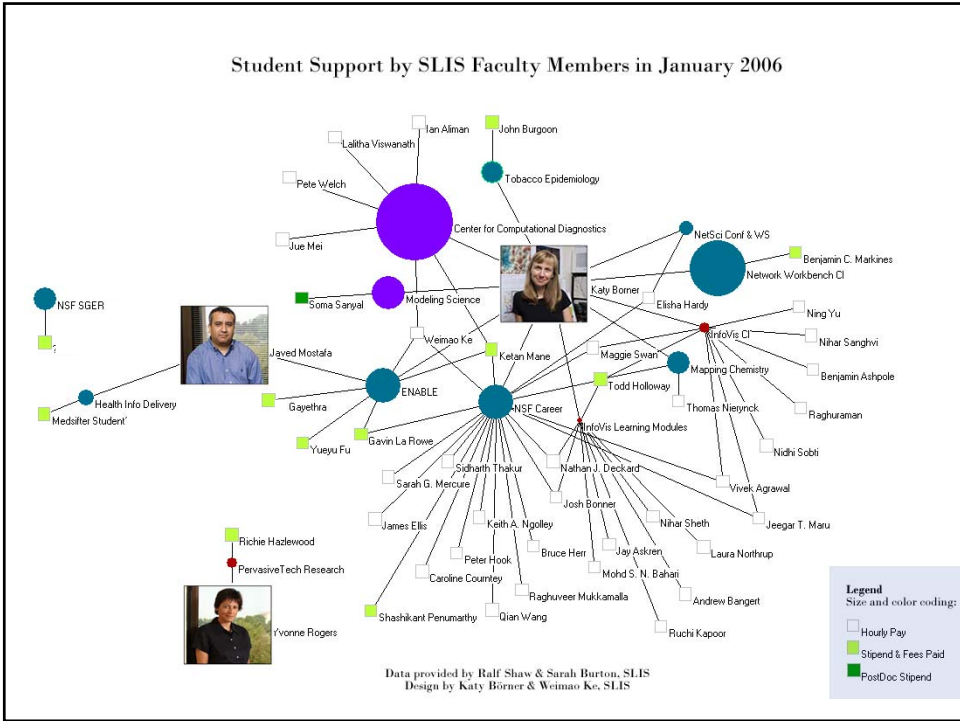
10







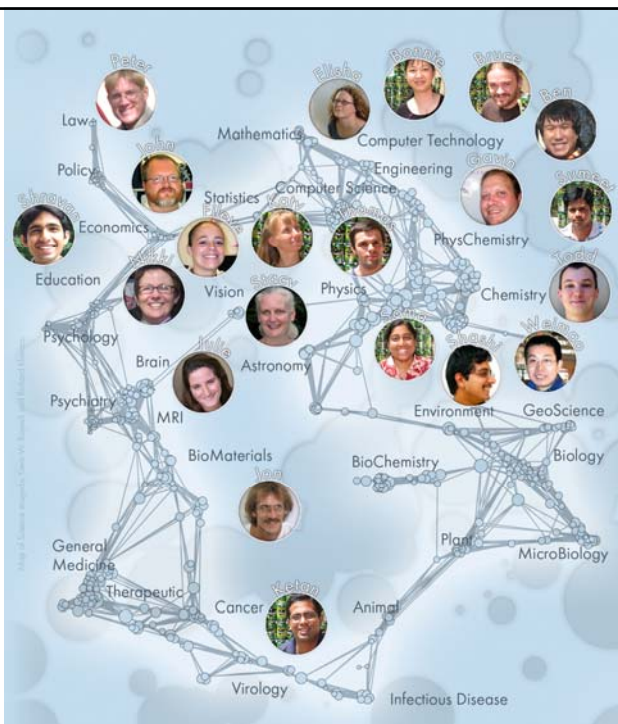




I would like to thank all my colleagues and collaborators.



If not otherwise indicated, this work was conducted at the Information Visualization Laboratory and the Cyberinfrastructure for Network Science Center at Indiana University.



The End.