

Newest Iteration of *Places & Spaces* Debuts at Virginia Tech



The exhibit on display at Virginia Tech.

After a **successful installation** at **Vanderbilt University** in early 2017, the *Places & Spaces* exhibit recently took up a **three-month residence at Virginia Tech's Newman Library**. Curator **Katy Börner** was on hand to deliver the opening address and to mark the gallery premiere of the exhibit's 13th iteration, "**Macrosopes for Playing with Scale.**" As the title suggests, the new visualizations allow the user to adjust the lens of the macroscope depending upon whether one wants, say, a close-up of a single day in world history or a panoramic view of the space between galaxies.

The exhibit's **opening at Virginia Tech** coincides with the unveiling of the **Newman Library's Data Viz Studio**, an education hub where members of the Virginia Tech community can learn and practice the craft of information visualization. According to Michael J. Stamper, former CNS designer and new Data Visualization Designer & Digital Consultant for Arts at VT, the exhibit nicely complements the university's push towards making data visualization services and facilities available for projects of all scopes and levels of complexity. For Stamper, *Places & Spaces* supports the Data Viz Studio's mission as it "exemplifies the variety, beauty, and cross-disciplinary nature of art, design, and science." Click [here](#) for library hours, location and contact information.

Ready, Set, MAKE! ISE Puts High-Tech Spin on Summer Camps

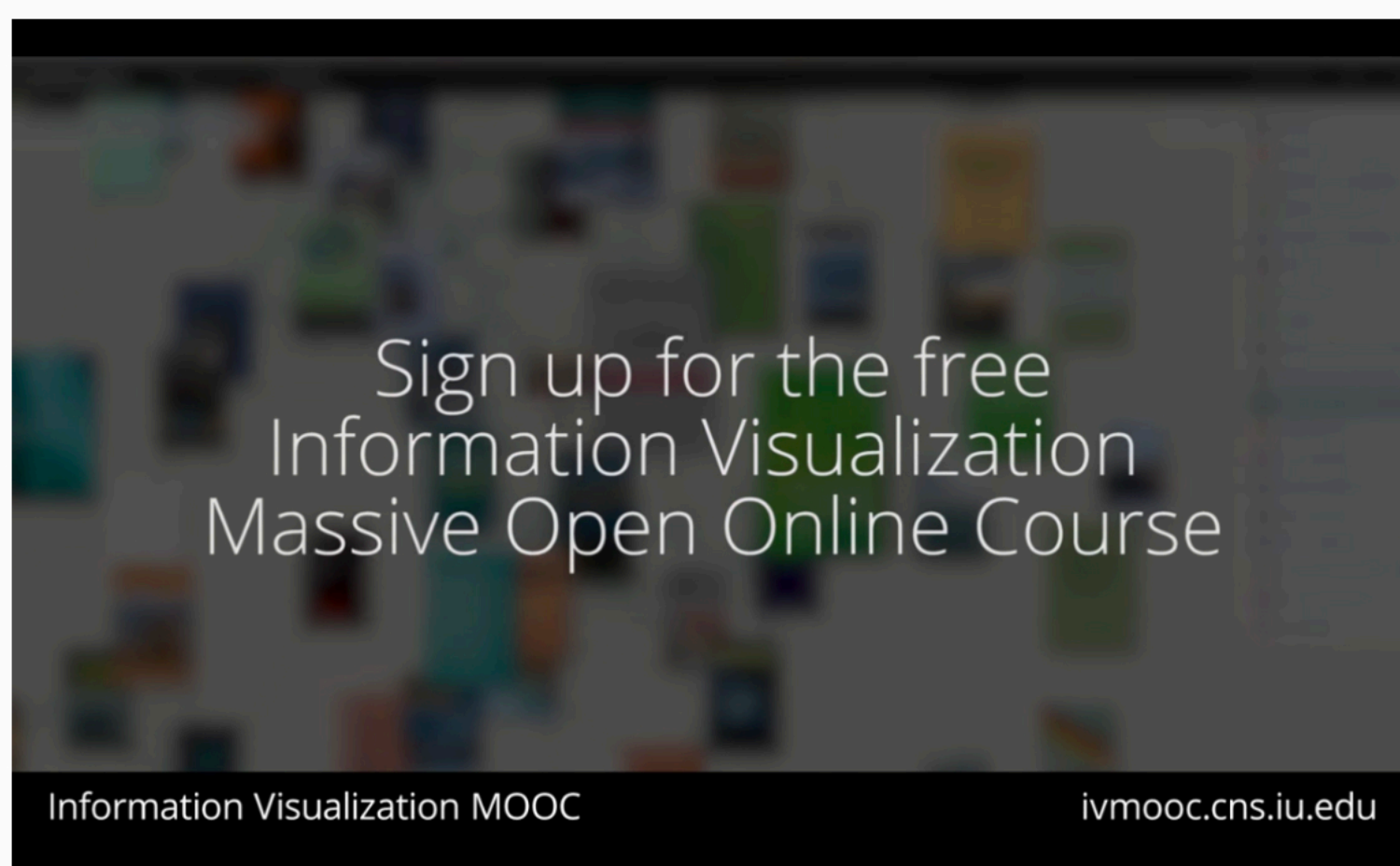


For an older generation, the words "summer camp" can conjure up memories of bug-infested nature hikes, charred hot dogs, and makeshift craft projects. One look at the **Intelligent Systems Engineering** program's spin on this seasonal tradition, however, and you'll soon discover that this is NOT your parents' summer camp. **The ISE summer program** places **young people at the forefront of developments in engineering and technology**. With guidance from instructors who are experts in their fields, campers explore robotics, virtual reality, intelligent architecture, interactive fashion, and much more. To learn how to reserve a spot for 2018, contact isecamps@indiana.edu for more information.



Meet the Center's New Data Guru

Making sophisticated **data-mining techniques** accessible to students and academics. Fighting the opioid epidemic through the **Indy Big Data Challenge**. Reimagining the **classroom experience with Augmented Reality**. All just a day at the office for research scientist **Olga Scrivner**! Stop by her LI018 office in Wells or attend one of her many workshops at IU.



Maximizing the MOOC Potential

Massively Open Online Courses have an outreach potential as large as their name. But they also present significant challenges for students and teachers alike. A **recent article** published in **JASIST** by CNS researchers uses data from the popular **IVMOOC** to demonstrate how analysis and visualization can increase the effectiveness of online teaching and learning.

Copyright © 2017 CNS Center, All rights reserved.

You are receiving this email because you have communicated or collaborated with CNS in the past or opted in at our website.

Our mailing address is:
CNS Center

Herman B Wells Library, Room 020
1320 E. 10th St.
Bloomington, IN 47405

[Add us to your address book](#)

Want to change how you receive these emails?
You can [update your preferences](#) or [unsubscribe from this list](#)

MailChimp